



Structured Cable Products™
Quality Installations Deserve Quality Products

ISSUE NO. 016

CATALOG

Low Voltage Cables and
Accessories for the
Commercial and Residential
Custom Installation,
A/V and Pro A/V, Security,
Datacom, Satellite/Cable,
and Electrical markets.



USA Toll Free

866-470-5742

Direct Line: +1-954-327-5770 Email: sales@scpcat5e.com

www.scpcat5e.com



Structured Cable Products™

Quality Installations Deserve Quality Products

Structured Cable Products, Inc. ("SCP") - Ft. Lauderdale, FL USA, is a leading manufacturer and global supplier of Low Voltage Cables and Accessories for the commercial and residential Custom Installation, AV and Pro AV, Security, Datacom, and Electrical markets.

SCP has three stocking locations in the USA that serve the USA, Canada, Caribbean, and Latin American regions. Our distribution center in The Netherlands serves Europe, Middle East, and African regions.

SCP has become a worldwide brand because of the dedication of our national and regional distributors and our commitment to provide you with the best quality, price, selection, and service in our industry. This commitment is unmatched and has been the foundation for our success and the success of our distribution partners.

Quality, Price, Selection, and Service

We know how important it is to have product available when you need it. That is why we maintain a large inventory at each of our stocking locations. These strategically located stocking centers enable SCP to process, fill, and ship orders quickly and efficiently... and usually the same day.

We are also able to assist you with your OEM or private label requirements for bulk cables, HDMI, and other accessory items.

Please contact us directly for more information.

This catalog is a snapshot of the wide ranging product lines that SCP manufactures and stocks. For the most current product information, please visit our website at www.scpcat5e.com.

If you have any questions or would like to place an order, please contact us:

Email - sales@scpcat5e.com

Toll Free in the USA: **1-866-470-5742**

Direct Line: **+1-954-327-5770**

**Corporate Office and
East Coast Warehouse :**
3490 SW 30TH AVE
Dania Beach, FL 33312
Toll Free: 866-470-5742
Direct Line: (954) 327-5770
Fax: (954) 327-8176

Texas Warehouse :
1184 W. Corporate Dr. Ste D
Arlington, TX 76006
Tel: (817) 635-2052
Fax: (817) 635-2056
Email: Scptx@scpcat5e.com

California Distribution Center :
10846 Commerce Way
Fontana, CA 92337, USA.
Email: sales@scpcat5e.com

EU Distribution Center :
Tradeboulevard 4
Haven 528
4761 RL Moerdijk
The Netherlands
Email: sales@scpcat5e.com



Toll Free 1-866-470-5742 | Direct: +1-954-327-5770 | Email: sales@scpcat5e.com | www.scpcat5e.com |





Private Label

SCP manufactures UL and/or ETL rated low voltage cables, interconnects, jacks, wall plates, connectors, patch cords, HDMI cables, and baluns for other well known national and regional brands.

If you are interested in branding your low voltage cables and accessories... talk to SCP. We have the experience and capability to assist you. Our private label program is managed confidentially.

We are able to manufacture high quality bulk cables with various jacket configurations such as PVC (CM, CMR, FT4), Plenum (CMP, FT6), LSZH, and Direct Burial (LLDPE). SCP manufactures superior quality products at the price points that you need.

In addition, your bulk cables can be packaged on spools/drums, reel-in-box, pull boxes, and coil packs/rings. We are able to private label for USA and International customers and comply with all regulatory standards including ANSI/TIA/EIA, ISO/IEC, and CENELEC.

If you are a brand manager that is considering outsourcing your bulk cable manufacturing, SCP has the experience and resources to meet your needs. Our MOQ's are surprisingly low and we can work with you on a plan to grow your branded bulk cable and/or accessory lines.

Custom Orders

SCP has a wide assortment of bulk cables and accessories as part of our warehouse stocking program. However, we realize that you may need items in your market that we do not typically stock.

This is where our Custom Order manufacturing capabilities can assist you. Our custom order MOQ's are very reasonable and our turnaround time is faster than many other manufacturers. So if you need a specific low voltage cable, or a cable packaged in non-standard lengths... our Custom Order program may be right for you.

OEM

If you are a manufacturer in need of OEM low voltage cables or accessories, SCP may be able to help you. We can manufacture OEM low voltage cables and accessories for the following market segments: Custom Installation, A/V or Pro AV, Data/Telecom, CCTV/Security, and Satellite/CATV; residential and commercial.

To discuss your Private Label, Custom Order, or OEM requirements please contact us today.

Phone: +1-954-327-5770 Email: Sales@scpcat5e.com

Private Label - Custom Orders - OEM Manufacturing

Also available for OEM and Private Label include: HDMI Cables, HDMI Baluns, A/V Electronics, Wall Plates, Jacks, and other accessory items for the Custom Installation, A/V Security, and Datacom markets.

BULK CABLES

Lighting & Control	Pg. 6-9
Speaker	Pg. 10-14
Direct Burial	Pg. 12-13, 20-22, 28, 30-32
Networking LAN	Pg. 15-22
Structured-Composite	Pg. 23-26
Coaxial, Video	Pg. 27-32
Security, Sound, & Alarm	Pg. 33-38
Fire Alarm	Pg. 39-41

HDMI

HDMI Cables	Pg. 42-43
HDMI Baluns/Extenders	Pg. 42-43

CONNECTORS & ADAPTERS

EZ-RJ45® System	Pg. 45
RJ45 Plugs & Couplers	Pg. 46
Compression Connectors	Pg. 47-48
Crimp-On & Twist-On Connectors	Pg. 48
Adapters	Pg. 49
B Connectors	Pg. 49
Speaker Banana Plugs	Pg. 49

NETWORKING

Keystone Jacks	Pg. 51
Patch Cords Ethernet	Pg. 51
Patch Panels & Brackets	Pg. 52

INSTALLATION PRODUCTS

Pre-Wire Install Kits	Pg. 54
Cable Ties & Clips	Pg. 54
CATV Splitters & Amplifiers	Pg. 54
Security CCTV Accessories	Pg. 54
Low Voltage Mounting Brackets	Pg. 54
Structured Wiring Panels	Pg. 56
Structured Wiring Modules	Pg. 56

TOOLS

RJ45 Crimp Tools	Pg. 57
Coax Crimp Tools	Pg. 58
Strippers & Cutters	Pg. 58
Punch Down Tools	Pg. 58

WALL PLATES & MODULES

Decorator Style Wall Plates	Pg. 60
Keystone Wall Plates	Pg. 60-61
Blank Wall Plates	Pg. 61
Keystone Snap-In Modules	Pg. 61-62
Combo Wall Plates	Pg. 62
Telecom & TV Wall Plates	Pg. 62-63
Brush Style Wall Plates	Pg. 63

The SCP logo, HNCPROPLUS™, HNCPRO™, are trademarks of Structured Cable Products Inc in the United States and/or other countries. Other trademarks and trade names may be used in this document to refer to either the entities claiming the marks and names or their products. Structured Cable Products Inc. disclaims proprietary interest in the marks and names of others.

Even **350lbs.** of Steel Can't Crush SCP Cable Boxes

Structured Cable Products, Inc has the best cable boxes in the industry

SCP "Pull Boxes" were originally developed with the input and testing by actual cable installers.

SCP Pull Boxes feature enhancements that are installer important, such as: double walled corrugated construction that is strong but lightweight; reinforced hand grip to reduce tearing; wide mouth dispenser to eliminate tangles and snags during the cable pull; and moisture resistant exterior coating.

Don't settle for less. Save time and reduce installation headaches. Ask your dealer or distributor for SCP cables.

What makes SCP's boxes superior?

- 7mm thick double-walled corrugated cardboard construction
- Moisture resistant exterior coating
- Super Strong
- Lightweight
- Hand grip won't tear
- Zero snags or tangles

SCP uses
REELEX® Tangle-Free Technology



REELEX II™ Packaging



SUPER STRONG!
LIGHTWEIGHT!



Protected by US and International Patents.
www.reelex.com/patents



Email: sales@scpcat5e.com

Phone: 1-866-470-5742



SCP cables are UL or ETL

www.scpcat5e.com



Structured Cable Products™
Quality Installations Deserve Quality Products

BULK CABLES | LIGHTING & CONTROL

Crestron | Lutron | Elan | Vantage

SCP knows that the backbone to any automation or lighting control system is the cable. These cables must consistently perform at the highest level to ensure reliable system performance. SCP manufactures these cables to exacting manufacturer-specific standards and designs. SCP carries a complete line of system compatible cables for: Crestron®, Lutron®, Elan®, Vantage®, and more.

CRESTRON®

SCP manufactures a complete line of Crestron® system compatible cables. SCP's Crestron compatible cables are manufactured to the exact specifications for use in Crestron's DigitalMedia™, Crestnet®, and fiber systems.

Compatible with Crestron® control systems, touch panels, keypads, tuners, audio processors, video switchers, camera pan/tilts, expansion modules, and other Crestron devices. SCP Crestron compatible cables are available in Non-plenum PVC, Plenum CMP, or Low Smoke Zero Halogen (LSZH).

LUTRON®

SCP carries a complete line of Lutron® compatible cables, manufactured to exacting specifications for use with all Lutron lighting systems, including: HomeWorks®, Quantum Systems®, Grafik Eye®, and Sivoia®.

SCP Lutron compatible cables are great for residential, commercial, and industrial installations. Our SCP Lutron cables are UL rated CMR, Plenum CMP, and also available in LSZH for International Markets.

ELAN® & VANTAGE™

SCP manufactures infrastructure cables for Elan® Via! and Vantage™ control systems. SCP cables are manufactured to exact manufacturer brand specifications.

OTHER BRANDS

SCP Lighting and Control cables are also compliant with other control systems such as AMX®, Control4®, and more.

Crestron®, Crestnet®, and DigitalMedia® are registered trademarks of Crestron Electronics, Inc.

Lutron®, HomeWorks®, Sivoia®, Grafik Eye®, and Quantum Systems® are registered trademarks of Lutron Electronics Co., Inc.

Meets or exceeds the requirements of Elan® Via! protocols. (Elan and Via! are Elan trademarks.)

Vantage™ is a trademark of Legrand Group.

AMX® is a registered trademark of AMX Corporation.

Control4® and the Control4 logo are registered trademarks of Control4 Corporation.



Toll Free 1-866-470-5742 | Direct: +1-954-327-5770 | Email: sales@scpcat5e.com | www.scpcat5e.com |



CRESTRON®

SCP Cables for Crestron® automation and control systems.

Features:

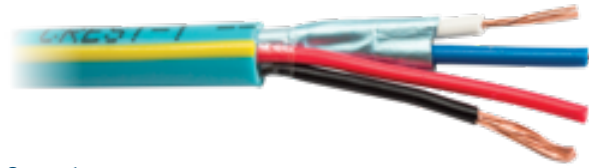
Manufactured to Exacting Crestron® Specifications
15 Year Standard Warranty/25 Year System Warranty
For use with Crestron® and other OEM systems

Compliance:

UL CM, CMR, CMP CL2(R),CL3(R)
c(UL) FT4/FT6
RoHS Compliant
LSZH: IEC 60332-1

Applications:

OEM Systems Instrumentation and Control
Sound and Audio
Class 2/3 Low Voltage Power
Residential/Commercial/Institutional Media Control Systems

**Crest-1**

2C / 22 AWG Stranded BC with AL Foil Shield w/Drain for Data
+ 2C/18 AWG Stranded BC for Power. Available PVC, LSZH, & PLENUM.
Equivalent to Cresnet® Control Cable. Also compatible with
AMX AXLink™, Lutron® GRX-CBL-346S

SCP Part No.: **CREST-1**

PVC, Jacket Colors: Teal

SCP Part No.: **CREST-1-LSZH**

LSZH, Jacket Colors: Gray

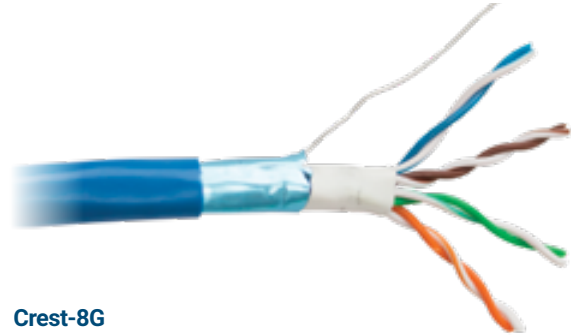
SCP Part No.: **CREST-1-P**

CMP, Jacket Colors: Teal

Packaging: 1000ft / 305m Spool

Package Wt: 40 lbs / 18.25 kgs

OD: 6.35±0.10mm

**Crest-8G**

Hybrid CAT5E/6 - 24 AWG HDPE Insulated Solid BC 4PR, S/FTP Overall
AL Foil + 40% TC Braid w/Drain, PVC Jkt. Equivalent to DigitalMedia 8G™

SCP Part No.: **CREST-8G**

PVC, Jacket Colors: Teal

Packaging: 500ft / 152m Spool

Package Wt: 17.1 lbs / 7.75 kgs

OD: 6.20±0.10mm

Crestron®, Cresnet®, and DigitalMedia® are registered trademarks of Crestron Electronics Inc.

LUTRON®

SCP Cables for Lutron® lighting and shade control systems.

Features:

Manufactured to Exacting Lutron® Specifications
15 Year Standard Warranty/25 Year System Warranty
For use with Lutron Homeworks®, Grafik Eye®, Grafik Integrale®,
Quantum® Systems, Sivoia® and other OEM systems.

Compliance:

UL CM, CMR, CMP CL2(R),CL3(R)
c(UL) FT4/FT6
RoHS Compliant
LSZH: IEC 60332-1

Applications:

OEM Systems Instrumentation, Data and Control
Sound and Audio
Class 2/3 Low Voltage Power
Residential/Commercial/Institutional Media Control Systems

**Lutron-Blue**

2C / 12 AWG Stranded BC TP + 1C / 18AWG Stranded BC
+ 2C / 22 AWG Stranded BC TP, AL Foil Shield w/Drain
Lutron® Data/Control/Power/Grafik Eye® 4000/6000

Equivalent to: Lutron GRX-CBL-46L-500

12 AWG Power Pair up to 500 Ft for QS Drive Unit

SCP Part No.: **LUTRON-BLUE**

PVC, Jacket Colors: Blue w/Royal Blue Stripe

SCP Part No.: **LUTRON-BLUE-P**

CMP, Jacket Colors: Light Blue w/Royal Blue Stripe

SCP Part No.: **LUTRON-BLUE-LSZH**

LSZH, Jacket Colors: WHITE W/BLUE STRIPE

Packaging: 500ft / 152m Spool

Package Wt: 44 lbs / 20 kgs

OD: 8.30±0.20mm

**Lutron-Green**

2C / 22 AWG Stranded BC TP with
AL Foil Shield w/Drain + 2C/18 AWG Stranded BC TP.

Lutron® KeyPad and Data Equivalent to: Lutron GRX-CBL-346S

18 AWG Power Pair Up To 125 Ft for QS Drive Unit

SCP Part No.: **LUTRON-GREEN**

PVC, Jacket Colors: Blue w/Green Stripe

SCP Part No.: **LUTRON-GREEN-P**

CMP, Jacket Colors: Blue w/Green Stripe

Packaging: 1000ft / 305m Spool

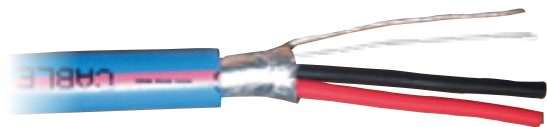
Package Wt: 38.5 lbs / 17.5 kgs

OD: 6.35±0.10mm

*Lutron®, Homeworks®, Sivoia®, Grafik Eye®, and Quantum Systems® are registered trademarks of Lutron Electronics Co., Inc.

LUTRON® Continued..

SCP Cables for Lutron® lighting and shade control systems.

**Lutron-Pink**

2C / 18 AWG Stranded BC TP, Overall AL Foil Shield w/Drain
HomeWorks® Dimmer & Switch 2C 18 AWG 300V

Other Applications: Analog Audio-Balanced/Unbalanced

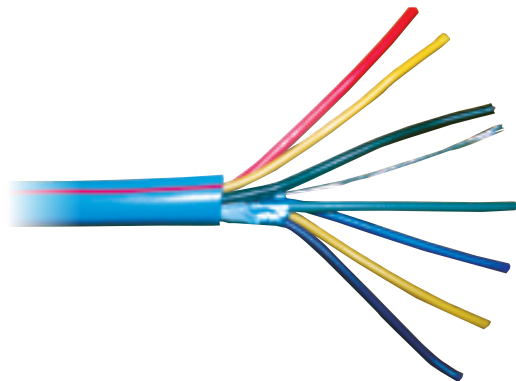
SCP Part No.: **LUTRON-PINK**

PVC, Jacket Colors: Blue w/Pink Stripe

Packaging: 1000ft / 305m Spool

Package Wt: 42.7 lbs / 19.4 kgs

OD: 6.60±0.10mm

**Lutron-Red**

4C / 18 AWG Stranded BC TP, AL Foil Shield w/Drain
+ 2C / 16 AWG Stranded BC TP + 1C / 18 AWG Stranded BC.

Sivoia® QED Shade Control

Equivalent to: Lutron SVQ-CBL

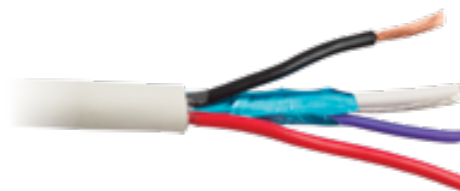
SCP Part No.: **LUTRON-RED**

PVC, Jacket Colors: Blue w/Red Stripe

Packaging: 500ft / 152m Spool

Package Wt: 46.2 lbs / 21 kgs

OD: 8.65mm(0.3406")±0.10mm

**Lutron-QS**

2C / 22 AWG Stranded BC TP with AL Foil Shield w/Drain for Data
+ 2C/16 AWG Stranded BC TP for Power. Available PVC and LSZH

Lighting Control for Quantum® Systems

Equivalent to: Lutron QSH-CBL-M-500

16 AWG Power Up To 200 Ft for QS Drive Unit

SCP Part No.: **LUTRON-QS**

PVC, Jacket Colors: White

SCP Part No.: **LUTRON-QS-P**

CMP, Jacket Colors: White

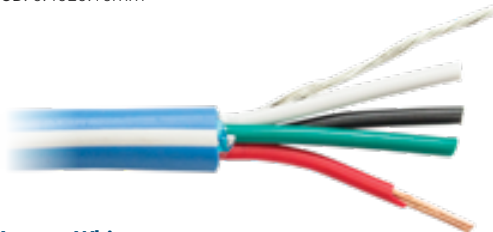
SCP Part No.: **LUTRON-QS-LSZH**

LSZH, Jacket Colors: White

Packaging: 500ft / 152m Spool

Package Wt: 22.2 lbs / 10 kgs

OD: 6.40±0.10mm

**Lutron-White**

4C / 18 AWG Stranded BC TP, Overall AL Foil Shield w/Drain
HomeWorks® Dimmer & Switch 4C 18 AWG 300V

Other Applications: Analog Audio-Balanced/Unbalanced

SCP Part No.: **LUTRON-WHITE**

PVC, Jacket Colors: Blue w/White Stripe

Packaging: 1000ft / 305m Spool

Package Wt: 51.75 lbs / 23.5 kgs

OD: 6.10±0.10mm

*Lutron®, Homeworks®, Sivoia®, Grafik Eye®, and Quantum Systems® are registered trademarks of Lutron Electronics Co., Inc.

ELAN®

SCP Cables for Elan® systems.

Features:

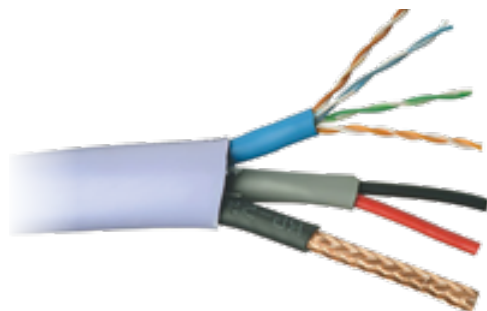
Manufactured to Exacting Elan® Specifications
Elan® Home Security Systems
15 Year Standard Warranty

Compliance:

UL CM, CMR CL2(R), CL3(R)
c(UL) FT 4
RoHS Compliant

Applications:

Systems Instrumentation and Control
OEM Security Systems
Class 2/3 Low Voltage Power

**Elan-1**

(1x) 2C / 18 AWG Stranded BC TP + (1x) RG59/U 20 AWG BC
+ (1x) Cat5e 24 AWG 4PR Solid BC UTP, PVC Jkt

SCP Part No.: **ELAN-1**

PVC, Jacket Colors: Purple

Packaging: 500ft / 152m Spool

Package Wt: 52 lbs / 23.7 kgs

OD: 13.00±0.20mm

*ELAN® and Elan Home Systems is a registered trademark of the Nortek Technology Solutions Segment.

VANTAGE™

SCP Cables for use with Vantage™ systems

Features:

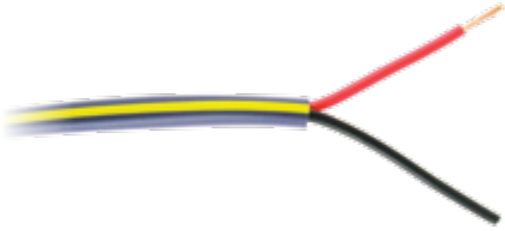
Connects All Vantage™ Station Devices and Touch Screens
Manufactured to Exacting Vantage® Specifications
15 Year Standard Warranty

Compliance:

UL CM,CMR CL2(R)/CL3(R)
c(UL) FT 4
RoHS Compliant

Applications:

OEM Systems Instrumentation, Data and Control
Bus Cable 600V
Sound and Audio


**Vantage 16 AWG Lighting Control Cable
For Vantage™ Lighting Systems**

2C / 16 AWG 65 Strand BC TP, Rated 600V, PVC Jkt

SCP Part No.: **VANTAGE-16/2**

PVC, Jacket Colors: Purple w/Yellow Stripe

Packaging: 1000ft / 305m Spool

Package Wt: 53 lbs / 24 kgs

OD: 6.10±0.10mm

Vantage™ is a trademark of Legrand Group.

Commercial AV Solutions



SCP is your trusted brand for commercial AV cables and connectivity.

SCP has a proven track record for innovation, delivering high quality cables, and connectivity solutions at a fair price.

Media Automation and Lighting Control

Structured Cabling

HDMI

Security and Fire

UL and ETL listed cables and accessories

Plenum, LSZH, and Riser Rated Cables

HDBaseT Category Cables

Video Distribution Cables and Connectivity

BULK CABLES | SPEAKER CABLES

Indoor/Outdoor | In-Wall | Landscape/Direct Burial

SCP speaker cables are well known for having exceptional quality, performance, and value in the custom installation industry. Our Speaker Cables are manufactured using high strand count conductors made from pure oxygen free copper, delivering optimum system performance for even the most discriminating audiophile. We have three pro grade speaker cable lines that include: HD Indoor/Outdoor, In-Wall, and our highly recommended Direct Burial/Landscape series. All of our pro grade lines are made with the highest quality materials and guaranteed to provide premium performance. Find out why most of the major speaker brands recommend SCP Pro Grade Speaker Cables.

Pro Grade HD Indoor/Outdoor

SCP Pro Grade HD Indoor/Outdoor speaker cables are the single cable solution for both indoor and outdoor high performance speaker installations. These speaker cables have high strand count oxygen free copper conductors that carry the power while retaining the extra flexibility that you need.

Many installation professionals and end users prefer the look and feel of our HD Indoor/Outdoor speaker cables for their premium speaker system installations. Our HD Indoor/Outdoor speaker cables are UL CMR rated for your inside installation while also having a heavy duty UV treated PVC jacket that is both sunlight resistant and even direct bury rated. Most of these cables are packaged in our industry leading pull boxes, allowing for the easiest and fastest installations.

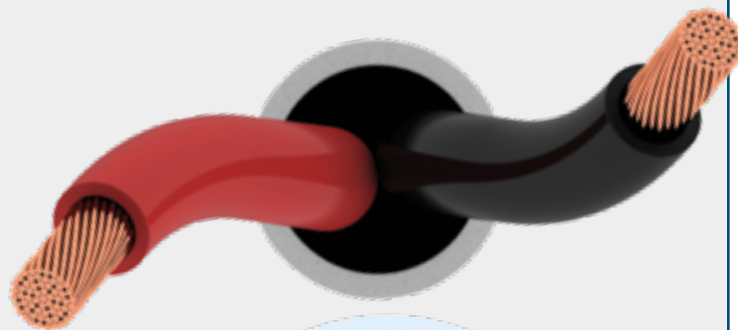
Pro Grade In-Wall

SCP Pro Grade In-Wall speaker cables are our leading speaker cable line for Custom Installation professionals. We offer both a UL CMR FT4 rated PVC jacket version and a Low Smoke Zero Halogen IEC 60332-1 rated cable. Our In-Wall speaker cables have the same high strand count oxygen free copper conductors from our Pro Grade HD Indoor/Outdoor speaker cables but with a lighter weight jacket. These cables provide the same performance but have a smaller overall diameter making them ideal for pulling through conduit or where a slightly lighter cable is preferred. These cables are also packaged in our industry leading pull boxes.

Pro Grade Direct Burial/Landscape

Our Pro Grade Direct Burial/Landscape speaker cable series are the perfect complement to your high performance landscape or outdoor speaker systems. These cables are industry known worldwide for reliable high performance in all outdoor environments from Scandinavian cold to the Arizona desert heat. Our Direct Burial/Landscape speaker cables are recommended by the leading premium speaker brands for pairing with their landscape and outdoor speaker systems.

These cables have the same high strand count oxygen free copper conductors as our other Pro Grade series cables but are gel filled for significant moisture protection. Our Direct Burial/Landscape speaker cables are constructed with a high quality Linear Low-Density Polyethylene (LLDPE) jacket that provides high impact protection and superior puncture resistance while retaining flexibility and strength even in harsh environments.



**AUDIOPHILE
APPROVED**
BEST IN CLASS

Recommended by leading Speaker Brands



Toll Free 1-866-470-5742 | Direct: +1-954-327-5770 | Email: sales@scpcat5e.com | www.scpcat5e.com |



PRO GRADE HD INDOOR/OUTDOOR

High Strand Count Oxygen Free Copper Speaker Cable with Heavy Duty PVC Jacket for Superior Performance, Flexibility and Protection

Features:

High Strand Count Oxygen Free Copper
Insulated Twisted Pair Conductors
Heavy Duty UV Sun Res PVC Jacket
Superior Flexibility

Compliance:

UL CMR CL2R/CL3R c(UL) FT 4
RoHS Compliant
Direct Bury Rated

Applications:

Home Theater Grade, Speaker, Patio
Class 2/3 Low Voltage Power
Residential/Commercial
Single Cable for both Indoor/Outdoor Installations

**PRO GRADE HD INDOOR/OUTDOOR**

UL CMR CL2R/CL3R c(UL) FT 4
AVAILABLE: 12 AWG TO 16 AWG
OXYGEN FREE COPPER

HIGH STRAND COUNT

XX = Jacket Color Code

SCP Part Number	AWG mm ²	Cond	Strand	Shield	OD Inch	OD mm	Jacket Type	Jacket Color	Length FT	Length M	Packaging	Weight Lbs	Weight Kgs
12/20FC-HD-XX	12/3.29	2	65	None	0.327	8.30	UV-PVC	Wt	500	152	Reel In Box	35.0	16.0
12/40FC-HD-XX	12/3.29	4	65	None	0.378	9.60	UV-PVC	Wt	500	152	Spool	67.0	30.5
14/20FC-HD-XX	14/2.11	2	105	None	0.284	7.20	UV-PVC	Bk, Pur, Wt	500	152	Pull Box	28.0	12.7
14/40FC-HD-XX	14/2.11	4	105	None	0.323	8.20	UV-PVC	Bk, Pur, Wt	500	152	Reel In Box	48.2	22.0
16/20FC-HD-XX	16/1.31	2	65	None	0.246	6.25	UV-PVC	Bk, Pur, Wt	500	152	Pull Box	20.4	9.3
16/40FC-HD-XX	16/1.31	4	65	None	0.276	7.00	UV-PVC	BK, Pur, Wt	500	152	Pull Box	31.8	14.5

PRO GRADE IN-WALL - Riser Rated

Professional High Strand Count Oxygen Free Copper Speaker Cable for Superior Performance and Flexibility

Features:

High Strand Count Oxygen Free Copper
Insulated Twisted Pair Conductors- Unshielded
Smaller OD for Easier Pulling in Conduit

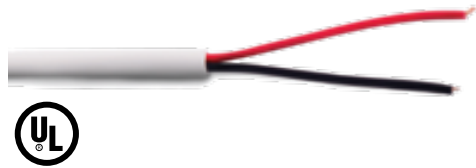
PVC and Low Smoke Zero Halogen
Superior Flexibility

Compliance:

UL CMR CL2R/CL3R c(UL) FT 4
RoHS Compliant
LSZH: IEC 60332-1

Applications:

Home Theater Grade, Speaker Level Audio
Class 2/3 Low Voltage Power
Residential/Commercial/Institutional

**PRO GRADE IN-WALL**

UL CMR CL2R/CL3R c(UL) FT 4
AVAILABLE: 12 AWG TO 16 AWG
OXYGEN FREE COPPER

HIGH STRAND COUNT

XX = Jacket Color Code

SCP Part Number	AWG mm ²	Cond	Strand	Shield	OD Inch	OD mm	Jacket Type	Jacket Color	Length FT	Length M	Packaging	Weight Lbs	Weight Kgs
12/20FC-XX	12/3.29	2	65	None	0.327	8.30	PVC	Pur, Wt	500	152	Reel In Box	35.0	16.0
12/40FC-XX	12/3.29	4	65	None	0.378	9.60	PVC	Pur, Wt	500	152	Spool	67.0	30.5
14/20FC-XX	14/2.11	2	105	None	0.284	7.20	PVC	Pur, Wt	500	152	Pull Box	28.0	12.7
14/40FC-XX	14/2.11	4	105	None	0.323	8.20	PVC	Pur, Wt	500	152	Reel In Box	48.2	22.0
16/20FC-XX	16/1.31	2	65	None	0.246	6.25	PVC	Bk, Pur, Wt	500	152	Pull Box	20.4	9.3
16/20FC-XX-1000	16/1.31	2	65	None	0.246	6.25	PVC	Pur, Wt	1000	305	Pull Box	30.0	13.6
16/40FC-XX	16/1.31	4	65	None	0.276	7.00	PVC	Pur, Wt	500	152	Pull Box	31.8	14.5

PRO GRADE IN-WALL : Low Smoke Zero Halogen - IEC 60332-1

Professional High Strand Count Oxygen Free Copper Speaker Cable for Superior Performance and Flexibility

SCP Part Number	AWG mm ²	Cond	Strand	Shield	OD Inch	OD mm	Jacket Type	Jacket Color	Length FT	Length M	Packaging	Weight Lbs	Weight Kgs
12/20FC-LSZH-XX	12/3.29	2	65	None	0.327	8.30	LSZH	Wt,	500	152	Reel In Box	35.0	16.0
12/40FC-LSZH-XX	12/3.29	4	65	None	0.378	9.60	LSZH	Wt,	500	152	Spool	67.0	30.5
14/20FC-LSZH-XX	14/2.11	2	105	None	0.284	7.20	LSZH	Wt, Pur	500	152	Pull Box	28.0	12.7
14/40FC-LSZH-XX	14/2.11	2	105	None	0.323	8.20	LSZH	Wt, Pur	500	152	Reel In Box	48.2	22.0
16/20FC-LSZH-XX	16/1.31	2	65	None	0.246	6.25	LSZH	Wt, Pur	500	152	Pull Box	20.4	9.3
16/20FC-LSZH-XX-1000	16/1.31	2	65	None	0.246	6.25	LSZH	Wt, Pur	1000	305	Pull Box	30.0	13.6
16/40FC-LSZH-XX	16/1.31	4	65	None	0.276	7.00	LSZH	Wt, Pur	500	152	Pull Box	31.8	14.5

SPEAKER CABLES – Contractor Grade

Contractor Grade Speaker Cables for Standard Speaker Installations

Features:

Stranded Bare Copper Conductors
Insulated Twisted Pair Conductors
Smaller OD for Easier Pulling in Conduit
Economical Performance

Compliance:

RoHS Compliant

Applications:

Speaker Level Audio
Class 2/3 Low Voltage Power
Residential/Commercial

**CONTRACTOR GRADE SPEAKER CABLES**

AVAILABLE: 14 AWG TO 16 AWG
STRANDED BARE COPPER CONDUCTORS

XX = Jacket Color Code

SCP Part Number	AWG mm ²	Cond	Strand	Shield	OD Inch	OD mm	Jacket Type	Jacket Color	Length FT	Length M	Packaging	Weight Lbs	Weight Kgs
14/2SP-41-YL	14/2.11	2	41	None	0.252	6.40	PVC	Yellow	500	152	Pull Box	23.5	10.7
14/2SP-41-YL-1000	14/2.11	2	41	None	0.252	6.40	PVC	Yellow	1000	305	Pull Box	46.2	21.0
14/4SP-41-YL	14/2.11	4	41	None	0.252	6.40	PVC	Yellow	500	152	Pull Box	44.0	20.2
16/2SP-26-XX	16/1.31	2	26	None	0.201	5.10	PVC	Bl, Gn, Pur, Wt	500	152	Pull Box	15.8	7.2
16/2SP-26-XX-1000	16/1.31	2	26	None	0.201	5.10	PVC	White	1000	305	Pull Box	30.0	13.7
16/4SP-26-XX	16/1.31	4	26	None	0.248	6.30	PVC	Bl, Or, Pur, Wt	500	152	Pull Box	28.0	12.7

SPEAKER CABLES – Pro Grade Landscape and Direct Burial

Professional High Strand Count Oxygen Free Copper Direct Burial Speaker Cable for Professional Landscape/Direct Burial/Outdoor Installations

Features:

High Strand Count Oxygen Free Copper
Superior Performance to Direct Burial PVC Cables
Waterproof Construction- Gel Filled
LLDPE Jacket Provides Superior Durability and Longevity
Retains Flexibility in Harsh Environments

Compliance:

CM, CMX, CL3
RoHS Compliant

Applications:

Outdoor Home Theater Grade, Speaker Level Audio
Direct Burial and UV Sunlight Resistant
Class 2/3 Low Voltage Power
Low Voltage Lighting and Control
Residential/Commercial/Institutional

**LANDSCAPE & DIRECT BURIAL**

CM, CMX, CL3

AVAILABLE: 14 AWG

OXYGEN FREE COPPER

LINEAR LOW-DENSITY POLYETHYLENE LLDPE JKT

HIGH STRAND COUNT

SCP Part Number	AWG mm ²	Cond	Strand	Shield	OD Inch	OD mm	Jacket Type	Jacket Color	Length FT	Length M	Packaging	Weight Lbs	Weight Kgs
14/2SP-DB-100	14/2.11	2	105	None	0.248	6.30	LLDPE	Black	328	100	Spool	15.8	7.2
14/2SP-DB-500	14/2.11	2	105	None	0.248	6.30	LLDPE	Black	500	152	Spool	43.0	19.6
14/4SP-DB-100	14/2.11	4	105	None	0.323	8.20	LLDPE	Black	328	100	Spool	29.5	13.4
14/4SP-DB-GEL-500	14/2.11	4	105	None	0.323	8.20	LLDPE	Black	500	152	Spool	43.0	19.6

**Pro-Grade****Landscape/Direct Burial Speaker Cables***Recommended by leading speaker brands*

DIRECT BURIAL - SPEAKER/AUDIO/SECURITY/CONTROL

Features:

Oxygen Free Bare Copper Conductors
 Direct Burial and UV Sunlight Resistant
 Superior Performance to Direct Burial PVC Cables
 Waterproof Construction - Water Block Tape
 LLDPE Jacket Provides Superior Durability and Longevity
 Retains Flexibility in Harsh Environments

Compliance:

CM, CMX,
 RoHS Compliant

Applications:

Speaker Level Audio
 Low Voltage Security, Lighting and Control
 Class 2/3 Low Voltage Power
 Commercial/Institutional/Residential

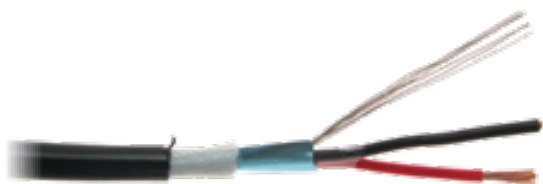


DIRECT BURIAL - UNSHIELDED

HIGH STRAND COUNT BARE COPPER CONDUCTORS
 LLDPE/PE JACKET

16 AWG - 14 AWG Unshielded Direct Burial 300 V 75°C

SCP Part Number	AWG/Cond	Strand	OD (inch)	OD (mm)	Length (ft)	Length (M)	Jacket Color	Packaging	Package Weight lbs	Package Weight kgs
16/2DB	16/2	65	0.244	6.20	1000	305	BK	SPOOL	32.1	14.60
16/4DB	16/4	65	0.268	6.80	1000	305	BK	SPOOL	53.5	24.32
16/4DB-500	16/4	65	0.268	6.80	500	152	BK	SPOOL	26.8	12.20
14/4DB	14/4	105/0.0063	0.339	8.60	1000	305	BK	SPOOL	82.5	37.50
14/4DB-500	14/4	105/0.0063	0.339	8.60	500	152	BK	SPOOL	42.9	19.50



DIRECT BURIAL - SHIELDED

HIGH STRAND COUNT BARE COPPER CONDUCTORS
 SHIELDING: OVERALL AL MYLAR W/DRAIN
 LLDPE/PE JACKET

18 AWG - 12 AWG Shielded Direct Burial/Outdoor 300 V 75°C

SCP Part Number	AWG/Cond	Strand	OD (inch)	OD (mm)	Length (ft)	Length (M)	Jacket Color	Packaging	Package Weight lbs	Package Weight kgs
18/2SHDB	18/2	16/0.010	0.213	5.40	1000	305	BK	SPOOL	25.6	11.65
18/4SHDB	18/4	16/0.010	0.244	6.20	1000	305	BK	SPOOL	39.8	18.10
18/6SHDB	18/6	16/0.010	0.283	7.20	1000	305	BK	SPOOL	54.3	24.70
16/2SHDB	16/2	65/0.0063	0.248	6.30	1000	305	BK	SPOOL	34.1	15.50
16/2SHDB-500	16/2	65/0.0063	0.248	6.30	500	152	BK	SPOOL	17.3	7.85
14/2SHDB	14/2	105/0.0063	0.283	7.20	1000	305	BK	SPOOL	48	21.80
14/2SHDB-500	14/2	105/0.0063	0.283	7.20	500	152	BK	SPOOL	24.2	11.00
12/2SHDB	12/2	65/0.010	0.346	8.80	1000	305	BK	SPOOL	67	30.45

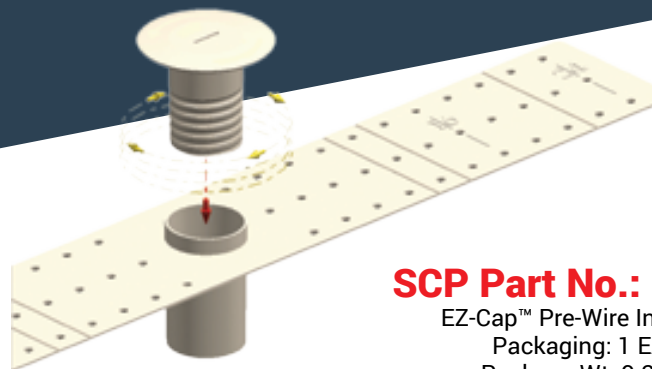
Speaker Pre-Wire Installation Kit

A MUST FOR ANY PRE-WIRE SPEAKER INSTALLATION!

The purpose of the EZ-Cap™ Pre-Wire Installation Kit is to allow easy access to the wiring for the customers who wish to install speaker components sometime in the future while remaining inconspicuous when not in use.

Audio/Video contractors, electrical contractors, or any low-voltage contractor pre-wiring new construction homes, townhouses, condominiums, track homes, apartment buildings, and commercial buildings for speaker components will find the EZ-Cap™ Pre-Wire Installation Kit invaluable. It allows the low-voltage contractor the ability to pick a location to pre-wire for a speaker component and secure the wire in place. After the wallboard is installed, the flush mount cap is placed over the wire outlet hole in the drywall. The cap gives a low-voltage contractor future access to the wire for easy installations. The EZ-Cap™ is small, unobtrusive, and can be painted over to match the wall or ceiling.

The EZ-Cap™ Pre-Wire Installation Kit can also be used in other pre-wire applications such as Security Systems, Garage door motor control wire, or any device that requires low-voltage wire to penetrate the drywall of a structure.



Patented Product

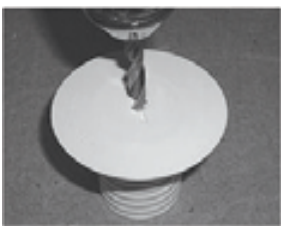
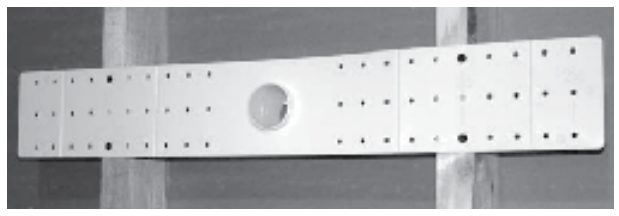
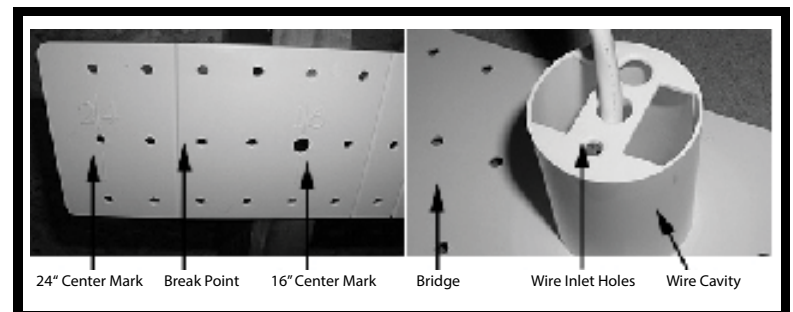
SCP Part No.: EZ-CAP

EZ-Cap™ Pre-Wire Installation Kit

Packaging: 1 EA/20 TO BOX

Package Wt: 9.2 lbs / 4.2 kgs

See Pg. 54



BULK CABLES | NETWORKING LAN

HDBaseT Category Cables | CAT7 | CAT6A Augmented | CAT6 | CAT5E

SCP Brand Category cables (CAT5E, CAT6, CAT6A, and CAT7) are known worldwide for superior performance and quality, all at a great price. All SCP Brand Category cables are UL or ETL and come with a 25 Year System Performance Warranty and 15 Year Standard Warranty. SCP Category cables are available in Riser Rated, Plenum, Low Smoke Zero Halogen, and Direct Burial. We have a large selection of UTP and Shielded cables to choose from with over 11 jacket colors. All of our Category cables are TIA/EIA and ISO/IEC compliant. Our HNCPRO™ for CAT5E and HNCPROPLUS+™ for CAT6 were the industry's *first HDBaseT™ Category cables*; providing superior HDBaseT performance over other brands of CAT5E and CAT6.



HDBaseT™ Category Cables

SCP's HDBaseT™ Enhanced Category cables include the HNCPROPLUS+™ for CAT6/6A and HNCPRO™ for CAT5E. SCP's HNCPROPLUS and HNCPRO Category cables were the first cables tested and recommended by the HDBaseT™ Alliance. HNCPROPLUS+ and HNCPRO cables are the industry's preferred connectivity solution for your HDBaseT devices. In fact, they are also the preferred and most cost effective solution for all HD distribution or networking applications.

These cables exceed performance standards for TIA/EIA 568-C.2 and ISO/IEC 11801 Ed2 Class D, E, and Ea. Available in PVC CMR and LSZH. The UL listed PVC CMR rated cables are Indoor/Outdoor rated with Sun Res jackets. The LSZH is IEC 60332-1 compliant. HNCPROPLUS+ and HNCPRO are available in both unshielded UTP, F/UTP overall foil shield, and U/FTP (HNCPROPLUS-6A) each pair shielded.

HNCPROPLUS+ and HNCPRO cables are designed to consistently outperform standard Category cables. They are designed for optimal signal transmission and provide more headroom to support today's bandwidth intensive applications requiring twisted pair cabling. HNCPROPLUS+ cables also provide superior performance for data networks, digital signage, control systems, CCTV over IP, and anywhere else that you would use Twisted Pair LAN cables. Now also available for CAT7/7A!!

CAT7/7A

SCP's Category 7 (CAT7) S/FTP 1000MHz 10GBaseT+ and Category 7A S/FTP 1500MHz 10GBaseT+ cables are ISO/IEC 11801 Ed2 CLASS F and Fa compliant. SCP CAT7 and CAT7A S/FTP cables are performance optimized for today and tomorrow's applications for twisted pair cabling. Available in Plenum CMP, PVC CMR, and LSZH IEC 60332-1 jackets.

CAT6A Augmented

SCP's Augmented Category 6 (CAT6A) cables take twisted pair performance for 10GBaseT capabilities to a new level. These SCP CAT6A cables are designed to exceed the TIA/EIA, ISO/IEC, and CENELEC performance standards. SCP's CAT6A U/FTP cables are specifically designed to support 10GBaseT high speed data network applications. Available in UTP and U/FTP (each pair shielded) configurations include: Plenum CMP, PVC CMR rated, or LSZH jacket.

CAT6

SCP Category 6 (CAT6) cables are manufactured and tested to meet TIA/EIA 568-C.2 Category 6 and ISO/IEC 11801 Ed2 Class E standards. SCP CAT6 cables provide higher performance and more headroom than CAT5E. CAT6 cables have more stringent specifications for crosstalk and system noise. SCP CAT6 UTP and F/UTP cables are constructed to create a round and flexible cable for easy pulling and stripping of the jacket. These cables are UL and/or ETL listed. Rated cables include: Plenum CMP, PVC CMR, LSZH, and Direct Burial. CAT6 UTP cables are available in over 9 different jacket colors.

CAT5E

SCP Category 5e (CAT5E) cables are manufactured and tested to meet TIA/EIA 568-C.2 and ISO/IEC 11801 Ed2 Class D standards. SCP CAT5E cables are available in both UTP (unshielded twisted pair) and F/UTP (shielded - overall foil shield) configurations. Jacket types available: PVC, Plenum CMP, PVC CMR, LSZH, and Direct Burial. SCP CAT5E cables are UL or ETL listed and are available in over 11 different jacket colors.

Recommended by HDBaseT®



Recommended by WyreStorm®
and other leading brands



WYRESTORM is a trademark of WYRESTORM TECHNOLOGIES, LLC

HNCPROPLUS+™ for CATEGORY 7 AUGMENTED - LSZH**Standards:**

ANSI/TIA/EIA 568-C.2
ISO/IEC 11801 Ed2 CLASS Fa
IEC 61156-5

Compliance:

LSZH: IEC 60332-1
RoHS Compliant

Applications:

Horizontal LAN 10GBaseT Ethernet
Audio, Video, IP Control, Other
HD Distribution, Voice over IP
HDBaseT, PoE, Digital and Analog Media

10G+**HNCPROPLUS+ for CAT7A S/FTP Shielded - LSZH**

HDBaseT™ Enhanced CATEGORY 7A S/FTP - 10GBaseT 1200 MHz
23 AWG Solid 4PR S/FTP, Overall TC Braid EA/PR AL-Foil, LSZH Jkt
ISO/IEC 11801 ED2 CLASS FA, LSZH IEC 60332-1 JKT -

SCP Part No.: **HNCPROPLUS-7A-LSZH**

LSZH, XX= Jacket Colors: Ice Blue

Packaging: 1000ft / 305m Spool

Package Wt: 49 lbs / 22.3 kgs

OD: 8.1+/-0.3mm

HNCPROPLUS+™ for CATEGORY 6 AUGMENTED - LSZH

HDBaseT™ Category Cables

Standards:

ANSI/TIA/EIA 568-C.2
ISO/IEC 11801 Ed2 CLASS Ea
IEC 61156-5
HDBaseT Recommended

Compliance:

LSZH: IEC 60332-1
RoHS Compliant

Applications:

Horizontal LAN 10GBaseT Ethernet
Audio, Video, IP Control, Other
HD Distribution, Voice over IP
HDBaseT, PoE, Digital and Analog Media

10G**HNCPROPLUS+ for Cat6A U/FTP Shielded - LSZH**

HDBaseT™ Enhanced 10GBaseT, 600 MHz 23 AWG Solid BC,
4PR U/FTP, Each Pair AL Foil Shield, TC Drain, LSZH Jkt

SCP Part No.: **HNCPROPLUS-6A-LSZH**

LSZH, XX= Jacket Colors: Ice Blue

Packaging: 1000ft / 305m Spool

Package Wt: 43 lbs / 19.6 kgs

OD: 7.8mm±0.3mm

HNCPROPLUS+™ for CATEGORY 6

HDBaseT™ Category Cables

Standards:

ANSI/TIA/EIA 568-C.2
ISO/IEC 11801 Ed2 CLASS E

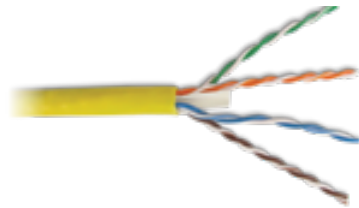
Compliance:

PVC: UL CMR c(UL) FT 4
LSZH: IEC 60332-1

Applications:

Horizontal LAN 10/100/1000BaseT Ethernet
Audio, Video, IP Control, Other
Indoor/Outdoor Rated

HD Distribution, Voice over IP
HDBaseT, PoE, Digital and Analog Media
Sun Resistant / Direct Burial

**HNCPROPLUS+ for CAT6 U/UTP - PVC, LSZH**

HDBaseT™ Enhanced 550 MHz 23 AWG Solid BC,
4PR U/UTP, Sun Res, Indoor/Outdoor Rated

SCP Part No.: **HNCPROPLUS-XX**

XX= Jacket Colors: Black, Blue, Green, Orange, Red, Yellow, White

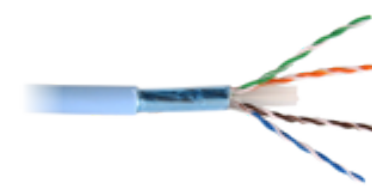
SCP Part No.: **HNCPROPLUS-LSZH-XX**

(LSZH is indoor rated only)

Packaging: 1000ft / 305m Box

Package Wt: 35 lbs / 16 kgs

OD: 6.2mm±0.10mm

**HNCPROPLUS+ for CAT6 Shielded F/UTP - PVC, LSZH**

HDBaseT™ Enhanced 550 MHz 23 AWG Solid BC, 4PR, Center Spline,
F/UTP, Overall AL Foil, TC Drain, Sun Res, Indoor/Outdoor Rated

SCP Part No.: **HNCPROPLUS-SH-XX**

PVC, XX= Jacket Colors: Pink

SCP Part No.: **HNCPROPLUS-SH-LSZH-XX**

LSZH, XX= Jacket Colors: Ice Blue (LSZH is indoor rated only)

Packaging: 1000ft / 305m Spool

Package Wt: 42.5 lbs / 19.25 kgs

OD: 7.50±0.10mm

First Category Cables Tested and Recommended by HDBaseT™

Recommended by **WyreStorm** **HDBT**
DIGITAL INTEGRITY Recommended

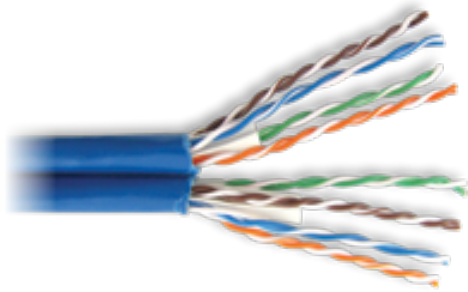


Toll Free 1-866-470-5742 | Direct: +1-954-327-5770 | Email: sales@scpcat5e.com | www.scpcat5e.com |



HNCPROPLUS+™ for CATEGORY 6 Continued..

HDBaseT™ Category Cables

**HNCPROPLUS+ for CAT6 U/UTP Siamese - PVC, LSZH**

2x HDBaseT™ Enhanced 550 MHz 23 AWG Solid BC, 4PR U/UTP,
Bonded Side-x-Side, Sun Res, Indoor/Outdoor Rated

SCP Part No.: **HNCPROPLUS-S-BL**

XX= Jacket Colors: Blue

SCP Part No.: **HNCPROPLUS-S-LSZH-BL**

XX= Jacket Colors: Blue (LSZH is indoor rated only)

Packaging: 1000ft / 305m Box

Package Wt: 78 lbs / 36 kgs

OD: (6.20X12.50)±0.10mm

HNCPRO™ for CATEGORY 5E

HDBaseT™ Category Cables

Standards:

ANSI/TIA/EIA 568-C.2
ISO/IEC 11801 Ed2 CLASS D
HDBaseT Recommended

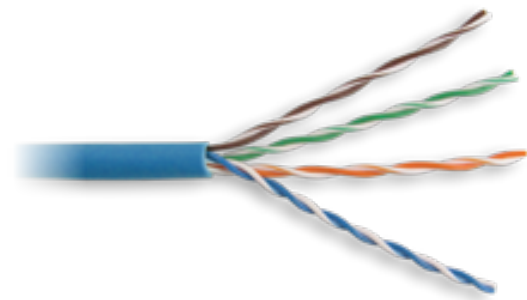
Compliance:

PVC: UL CMR CL2R c(UL) FT 4
LSZH: IEC 60332-1
RoHS Compliant

Applications:

Horizontal LAN 10/100/1000BaseT Ethernet
Audio, Video, IP Control, Other
Indoor/Outdoor Rated

HD Distribution, Voice over IP
HDBaseT, PoE, Digital and Analog Media
Sun Resistant / Direct Burial

**HNCPRO for CAT5E U/UTP - PVC, LSZH**

HDBaseT™ Enhanced 350 MHz 24 AWG Solid BC,
4PR U/UTP, Sun Res, Indoor/Outdoor Rated

SCP Part No.: **HNCPRO-XX**

XX= Jacket Colors: Blue, Black, Green, Orange, Purple, Red, Yellow, White

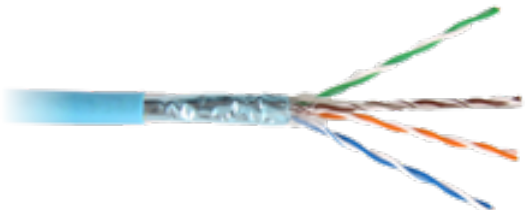
SCP Part No.: **HNCPRO-LSZH-XX**

(LSZH is indoor rated only)

Packaging: 1000ft / 305m Box

Package Wt: 22.5 lbs / 10.25 kgs

OD: 5.10±0.10mm

**HNCPRO for CAT5E Shielded F/UTP - PVC, LSZH**

HDBaseT™ Enhanced 350 MHz 24 AWG Solid BC, 4PR F/UTP,
Overall AL Foil, TC Drain, Sun Res, Indoor/Outdoor Rated

SCP Part No.: **HNCPRO-SH-XX**

PVC, XX= Jacket Colors: Pink

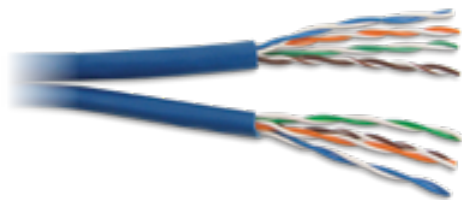
SCP Part No.: **HNCPRO-SH-LSZH-XX**

LSZH, XX= Jacket Colors: Ice Blue (LSZH is indoor rated only)

Packaging: 1000ft / 305m Spool

Package Wt: 42.5 lbs / 19.25 kgs

OD: 6.15±0.10mm

**HNCPRO for CAT5E U/UTP Siamese - PVC**

2x HDBaseT™ Enhanced 350 MHz 24 AWG Solid BC, 4PR U/UTP,
PVC Jkt, Bonded Side-x-Side, Sun Res, Indoor/Outdoor Rated

SCP Part No.: **HNCPRO-S-XX**

XX = Jacket Colors: Blue

Packaging: 1000ft / 305m Spool

Package Wt: 78 lbs / 36 kgs

OD: (5.10X10.50)±0.10mm

First Category Cables Tested and Recommended by HDBaseT™

Recommended by **WyreStorm** **HDBT**
DIGITAL INTEGRITY Recommended

CATEGORY 7/7A - 10G+ Performance**Standards:**

ANSI/TIA/EIA 568-C.2
ISO/IEC 11801 Ed2 CLASS F, FA
EN 50173-1, IEC 61156-5

Compliance:

LSZH: IEC 60332-1
RoHS Compliant

Applications:

Horizontal LAN 10GBaseT
Backbone 10 Gigabit Ethernet
HDBaseT, PoE, Digital and Analog Media

HD Distribution, Voice over IP

**Category 7**

10GBaseT 1000 MHz 23 AWG Solid BC,
4PR S/FTP, Overall TC Braid, EA/PR AL-Foil
SCP Part No.: **CAT7-LSZH**
LSZH, Jacket Colors: Ice Blue
Packaging: 1000ft / 305m Spool
Package Wt: 49 lbs / 22.3 kgs
OD: 8.1+/-0.3mm

Category 7A

10GBaseT 1500 MHz 23 AWG Solid BC,
4PR S/FTP, Overall TC Braid, EA/PR AL-Foil
SCP Part No.: **CAT7A-LSZH-BL**
LSZH, Jacket Colors: Ice Blue
Packaging: 1000ft / 305m Spool
Package Wt: 35.274 lbs / 16 kgs
OD: 8.1+/-0.3mm

CATEGORY 6 Augmented – CAT6A - 10G Performance**Standards:**

ANSI/TIA/EIA 568-C.2
ISO/IEC 11801 Ed2 CLASS Ea
IEC 61156-5

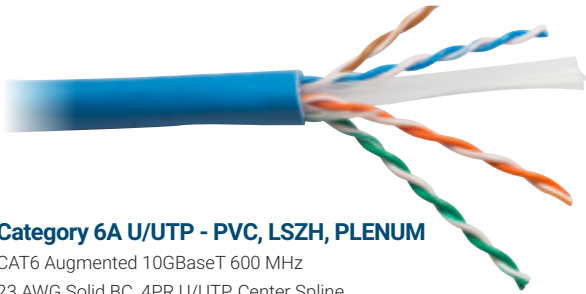
Compliance:

PVC: ETL or UL CMR CL2R c(UL) FT 4
LSZH: IEC 60332-1
RoHS Compliant

Applications:

Horizontal LAN 10GBaseT
Audio, Video, IP Control, Other
HDBaseT, PoE, Digital and Analog Media

HD Distribution, Voice over IP

**Category 6A U/UTP - PVC, LSZH, PLENUM**

CAT6 Augmented 10GBaseT 600 MHz
23 AWG Solid BC, 4PR U/UTP, Center Spline
SCP Part No.: **CAT6A-XX**
PVC, XX= Jacket Colors: Blue, White, Yellow
SCP Part No.: **CAT6A-P-XX**
CMP, XX= Jacket Colors: Blue, White
SCP Part No.: **CAT6A-LSZH-BL**
LSZH, Jacket Colors: Blue
Packaging: 1000ft / 305m Spool
Package Wt: 41 lbs / 18.7 kgs
OD: 7.60±0.10mm

**Category 6A Shielded U/FTP - PVC, LSZH**

CAT6 Augmented 10GBaseT 600 MHz 23 AWG
Solid BC, 4PR U/FTP, Each Pair AL Foil, TC Drain
SCP Part No.: **CAT6A-U/FTP-XX**
PVC, XX= Jacket Colors: Ice Blue, White
SCP Part No.: **HNCPROPLUS-6A-LSZH**
LSZH, Jacket Colors: Ice Blue
Packaging: 1000ft / 305m Spool
Package Wt: 43 lbs / 19.6 kgs
OD: 7.3±0.5 mm

10 Gig Network SOLUTIONS!

- Provides excellent signal isolation
- Superior EMI/RFI protection
- Increased data security
- Maximum pair separation
- Eliminates internal and external alien crosstalk
- Increases CAT6A performance headroom
- Available in Ice Blue or White jackets

CAT6A-U/FTP

SCP's CAT6A U/FTP cables are specifically designed to support 10GBaseT high speed data network applications. With individual foil shielded pairs, this design maximizes the 10GBaseT cable performance. Each CAT6A-U/FTP cable is performance optimized with 4 balanced twisted pairs on 23 AWG insulated solid bare copper conductors with each pair AL foil shielded. CAT6A-U/FTP cables are constructed to create a round and flexible cable for easy pulling and stripping of the cable jacket.

Termination Accessories

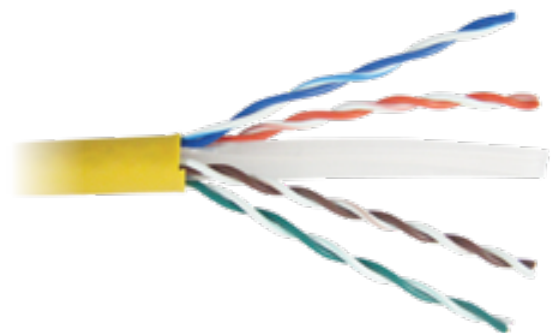
CAT6A-SH-JACK
See Pg. 51



106A
See Pg. 46



803
See Pg. 57

CATEGORY 6 - Unshielded, Shielded - CAT6 Enhanced 550 MHz 4PR Solid BC**Standards:**ANSI/TIA/EIA 568-C.2
ISO/IEC 11801 Ed2 CLASS E**Compliance:**PVC: ETL or UL CM/CMR c(UL) FT 4
Plenum: CMP FT6
LSZH: IEC 60332-1**Applications:**Horizontal LAN 10/100/1000BaseT Ethernet
Audio, Video, IP Control, Other
HD Distribution, Voice over IP
PoE, Digital and Analog Media**Category 6 U/UTP - PVC, Plenum, LSZH**

CAT6 Enhanced 550 MHz 23 AWG Solid BC, 4PR U/UTP

SCP Part No.: **CAT6-XX**CMR PVC, XX = Jacket Colors: Black, Blue, Gray, Green, Orange,
Purple, Red, White, YellowSCP Part No.: **CAT6-XX-ETL**CMR ETL, PVC, XX = Jacket Colors: Black, Blue, Gray, Green, Orange,
Purple, White, YellowSCP Part No.: **CAT6-P-XX**

CMP, XX = Jacket Colors: Black, Blue, Gray, Green, Purple, White, Yellow

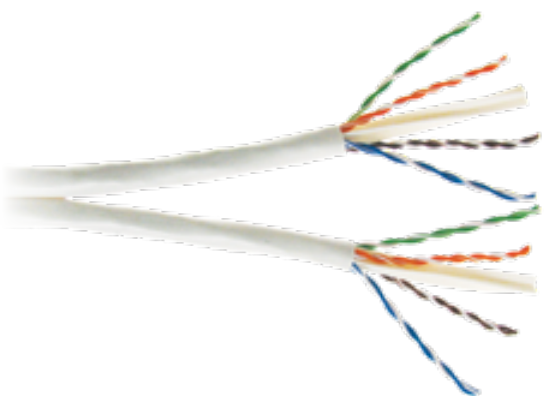
SCP Part No.: **CAT6-LSZH-XX**

XX = Jacket Colors: Blue, Gray, White

Packaging: 1000ft / 305m Box Plenum: Reel-In-Box

Package Wt: 35 lbs / 16 kgs

OD: 6.20±0.10mm

**Category 6 Siamese U/UTP - PVC**

2X CAT6 Enhanced 550 MHz 23 AWG Solid BC,

4PR U/UTP, Bonded Side-by-Side

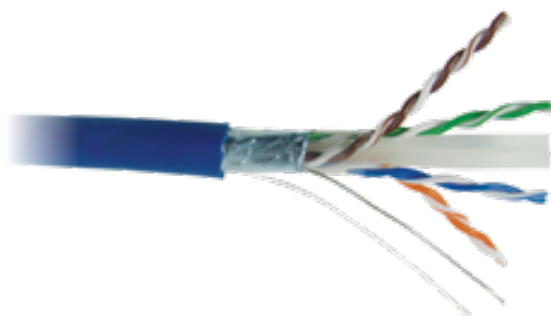
SCP Part No.: **CAT6-S-XX**

CMR PVC, XX= Jacket Colors: Blue, White

Packaging: 1000ft / 305m Spool

Package Wt: 72.2 lbs / 33 kgs

OD: 6.20±0.10mm

**Category 6 Shielded F/UTP - PVC, Plenum, LSZH**

CAT6 Enhanced 550 MHz 23 AWG Solid BC,

4PR, Center Spline, F/UTP, Overall Al-Foil, TC Drain

SCP Part No.: **CAT6SH-XX**

CMR PVC, XX= Jacket Colors: Blue, Gray, White

SCP Part No.: **CAT6SHP-XX**

CMP, XX = Jacket Colors: Blue, Gray

SCP Part No.: **CAT6SH-XX-LSZH**

LSZH, XX = Jacket Colors: White

Packaging: 1000ft / 305m Spool

Package Wt: 42.5 lbs / 19.25 kgs

OD: 7.50±0.10mm

CATEGORY 6 - Outdoor / Direct Burial - CAT6 Enhanced 550 MHz 4PR Solid BC

Standards: ANSI/TIA/EIA 568-C.2 ISO/IEC 11801 Ed2 CLASS E	Compliance: RoHS Compliant Linear Low-Density Polyethylene (LLDPE) jacket	Applications: Outdoor LAN 10/100/1000BaseT Ethernet Audio, Video, IP Control, Other	HD Distribution, Voice over IP PoE, Digital and Analog Media
--	--	--	---



Category 6 Direct Burial U/UTP - Gel Filled

CAT6 Enhanced 550 MHz 23 AWG Solid BC,
4PR U/UTP, Gel Filled, LLDPE Jkt
SCP Part No.: **CAT6-DB**
LLDPE, Jacket Color: Black
Packaging: 1000ft / 305m Spool
Package Wt: 40 lbs / 18 kgs
OD: 7.0±0.5 mm



Category 6 Direct Burial U/UTP- Water Block Tape

CAT6 Enhanced 550 MHz 23 AWG Solid BC,
4PR U/UTP, Water Block Tape, LLDPE Jkt
SCP Part No.: **CAT6-DB-WBT**
LLDPE, Jacket Color: Black
Packaging: 1000ft / 305m Spool
Package Wt: 40 lbs / 18 kgs
OD: 7.0±0.5 mm

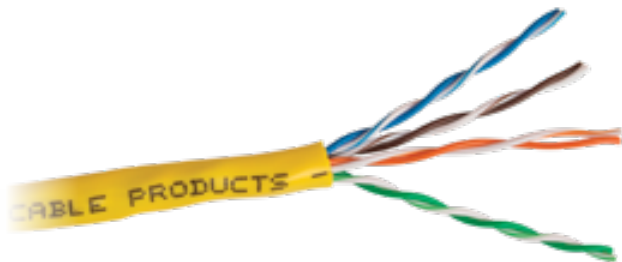


Category 6 Direct Burial Shielded F/UTP

CAT6 Enhanced 550 MHz 23 AWG Solid BC, 4PR, Center Spline,
F/UTP, Overall AL-Foil, TC Drain, Gel Filled, LLDPE Jkt
SCP Part No.: **CAT6SH-DB**
LLDPE, Jacket Color: Black
Packaging: 1000ft / 305m Spool
Package Wt: 46 lbs / 20.8 kgs
OD: 7.80±0.10mm

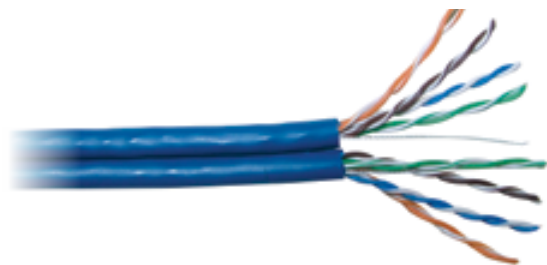
CATEGORY 5E - Unshielded, Shielded - CAT5E Enhanced 350 MHz 4PR Solid BC

Standards: ANSI/TIA/EIA 568-C.2 ISO/IEC 11801 Ed2 CLASS D	Compliance: ETL or UL CM/CMR CL2R c(UL) FT 4 Plenum: CMP FT6	RoHS Compliant LSZH: IEC 60332-1	Applications: Horizontal LAN 10/100/1000BaseT Ethernet Audio, Video, IP Control, Other	HD Distribution, Voice over IP PoE, Digital and Analog Media
--	---	-------------------------------------	---	---



CAT5E U/UTP - PVC, Plenum, LSZH

CAT5E Enhanced 350 MHz 24 AWG Solid BC, 4PR U/UTP
SCP Part No.: **CAT5E-XX**
CMR PVC, XX = Jacket Colors: Black, Blue, Gray, Green, Orange, Purple, Red, White, Yellow
SCP Part No.: **CAT5E-XX-5**
CMR PVC, XX = Jacket Colors: Blue, Green, White, Yellow
(Packaging: 500ft/152m Box Package Wt: 11 lbs / 5 kgs)
SCP Part No.: **CAT5E-XX-ETL**
CMR PVC, XX = Jacket Colors: Black, Blue, Gray, Green, Orange, Purple, Red, White, Yellow
SCP Part No.: **CAT5E-P-XX**
CMP, XX= Jacket Colors: Black, Blue, Gray, Green, White, Yellow
SCP Part No.: **CAT5E-XX-LSZH**
LSZH, XX = Jacket Colors: Blue, Gray, White, Yellow
Packaging: 1000ft / 305m Box
Package Wt: 22.5 lbs / 10.25 kgs
OD: 5.10±0.10mm

CATEGORY 5E - Unshielded, Shielded - CAT5E Enhanced 350 MHz 4PR Solid BC**CAT5E U/UTP Siamese - PVC**

2x CAT5E Enhanced 350 MHz 24 AWG Solid BC,
4PR U/UTP, PVC Jkt, Bonded Side-x-Side

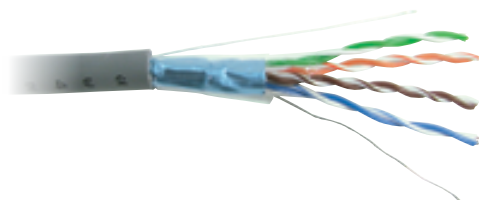
SCP Part No.: **CAT5E-S-XX**

CMR PVC, XX= Jacket Colors: Blue

Packaging: 1000ft / 305m Spool

Package Wt: 78 lbs / 36 kgs

OD: 5.10X10.50±0.10mm

**CAT5E Shielded F/UTP - PVC, Plenum**

CAT5E Enhanced 350 MHz 24 AWG Solid BC,
4PR F/UTP, Overall AL Foil, TC Drain

SCP Part No.: **CAT5E-SH-XX**

CMR PVC, XX = Jacket Colors: Black, Blue, Gray, White

SCP Part No.: **CAT5E-SHP-XX**

CMP, XX = Jacket Colors: Blue

Packaging: 1000ft / 305m Spool

Package Wt: 42.5 lbs / 19.25 kgs

OD: 6.15±0.10mm

CATEGORY 5E - Outdoor / Direct Burial - CAT5E Enhanced 350 MHz 4PR Solid BC**Standards:**

ANSI/TIA/EIA 568-C.2
ISO/IEC 11801 Ed2 CLASS D

Compliance:

RoHS Compliant
Linear Low-Density Polyethylene (LLDPE) jacket

Applications:

Outdoor LAN 10/100/1000BaseT Ethernet
Audio, Video, IP Control, Other

HD Distribution, Voice over IP
PoE, Digital and Analog Media

**CAT5E Direct Burial UTP - Gel Filled**

CAT5E Enhanced 350 MHz 24 AWG
Solid BC, 4PR U/UTP, Gel Filled, LLDPE Jkt

SCP Part No.: **CAT5E-DB-GEL**

LLDPE, Jacket Color: Black

Packaging: 1000ft / 305m Spool

Package Wt: 27.5 lbs / 12.5 kgs

OD: 5.5±0.5mm

**CAT5E Direct Burial UTP - Water Block Tape**

CAT5E Enhanced 350 MHz 24 AWG Solid
BC, 4PR U/UTP, Water Block Tape, LLDPE Jkt

SCP Part No.: **CAT5E-DB**

LLDPE, Jacket Color: Black

Packaging: 1000ft / 305m Spool or 500ft / 152m Spool

Package Wt: 24 lbs / 10.8 kgs --- 13 lbs/ 5.91 kgs

OD: 5.8±0.5mm

**CAT5E Direct Burial Shielded F/UTP**

CAT5E Enhanced 350 MHz 24 AWG Solid BC, 4PR F/UTP,
Overall AL-Foil, TC Drain, Gel Filled, LLDPE Jkt

SCP Part No.: **CAT5E-SH-DB**

LLDPE, Jacket Color: Black

Packaging: 1000ft / 305m Spool

Package Wt: 33 lbs / 15 kgs

OD: 6.40±0.10mm

**CAT5E Aerial**

CAT5E Aerial with Messenger - Enhanced 350 MHz 24 AWG Solid BC,
4PR F/UTP AL Foil Shield, TC Drain, w/Messenger, LLDPE Jkt

SCP Part No.: **CAT5E-AER**

LLDPE, Jacket Color: Black

Packaging: 1000ft / 305m Spool

Package Wt: 42.25 lbs / 19.2 kgs

OD: (6.50+2.60)X9.30±0.10mm

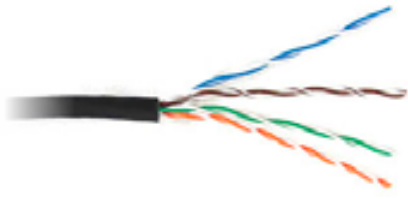
CATEGORY 5E - Outdoor / Direct Burial Continued..



CAT5E Indoor/Outdoor
CAT5E Enhanced 350 MHz 24 AWG Solid BC,
4PR U/UTP, UV Rated PVC Jkt
SCP Part No.: **CAT5E-IN/OUT**
LLDPE, Jacket Color: Black
Packaging: 1000ft / 305m Spool
Package Wt: 23 lbs / 10.5 kgs
OD: 5.10±0.10mm

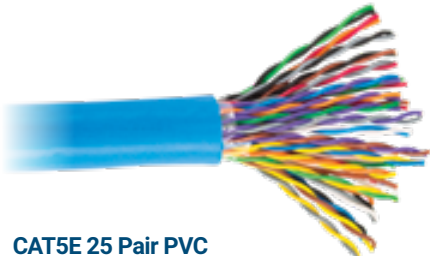
CATEGORY 5E - Stranded

Standards: ANSI/TIA/EIA 568-C.2 IEC 61156-6, CENELEC EN 50288-3-2 ISO/IEC 11801 Ed2 CLASS D		Compliance: ETL or UL CM c(UL) RoHS Compliant	Applications: Premise Patch Cable Portable and Flexible Installations	Horizontal LAN 10/100/1000BaseT Ethernet PoE, Digital and Analog Media
--	--	--	--	---

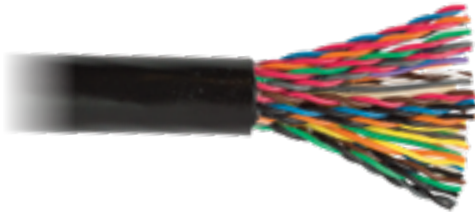


CAT5E Stranded PVC
CAT5E Enhanced 350 MHz 24 AWG (7x0.20mm) BC,
4PR U/UTP, PVC Jkt
SCP Part No.: **CAT5E-STR-XX**
PVC, Jacket Color: Black, Blue, Red
Packaging: 1000ft / 305m Spool
Package Wt: 20 lbs / 9 kgs
OD: 5.30±0.10mm

CATEGORY 5E - High Pair Count



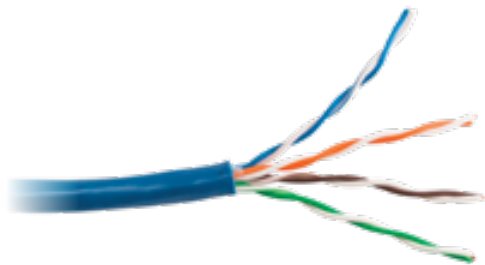
CAT5E 25 Pair PVC
CAT5E Enhanced 350 MHz 24 AWG
Solid BC, 25PR U/UTP, PVC Jkt
SCP Part No.: **CAT5E-25PR-XX**
PVC, Jacket Color: Blue
Packaging: 1000ft / 305m Spool
Package Wt: 139 lbs / 63.18 kgs
OD: 12.50±0.10mm



CAT5E 25 Pair Direct Burial
CAT5E Enhanced 350 MHz 24 AWG
Solid BC, 25PR U/UTP, Gel Fill, LLDPE Jkt
SCP Part No.: **CAT5E-25PR-DB**
LLDPE, Jacket Color: Black
Packaging: 1000ft / 305m Spool
Package Wt: 158 lbs / 71.82 kgs
OD: 13.0±0.210mm

CATEGORY 5 - LOW SKEW UTP CABLE - Digital Signage Video Cable

Features: UTP Based Video RGB Over UTP	Compliance: ETL or UL CM/ CMR CL2R/CL3R c(UL) FT4 RoHS Compliant	Applications: Digital Signage Class 2/3 Low Voltage Power	Permanent or Semi-Permanent Installations Residential/Commercial/Institutional
---	---	--	---



CAT5 Low Skew
CAT5 Ultra Low Skew- RGB Analog Video,
24 AWG Solid BC, 4PR U/UTP, CMR Rated PVC Jkt
SCP Part No.: **CAT5-LWSKEW**
PVC, Jacket Color: Blue
Packaging: 1000ft / 305m Box
Package Wt: 24 lbs / 11 kgs
OD: 5.10±0.10mm

BULK CABLES | STRUCTURED-COMPOSITE

These SCP structured cables are also known in the industry as composite or bundled cables. SCP offers multiple configurations of bundled-composite cables for residential and commercial structured wiring solutions.

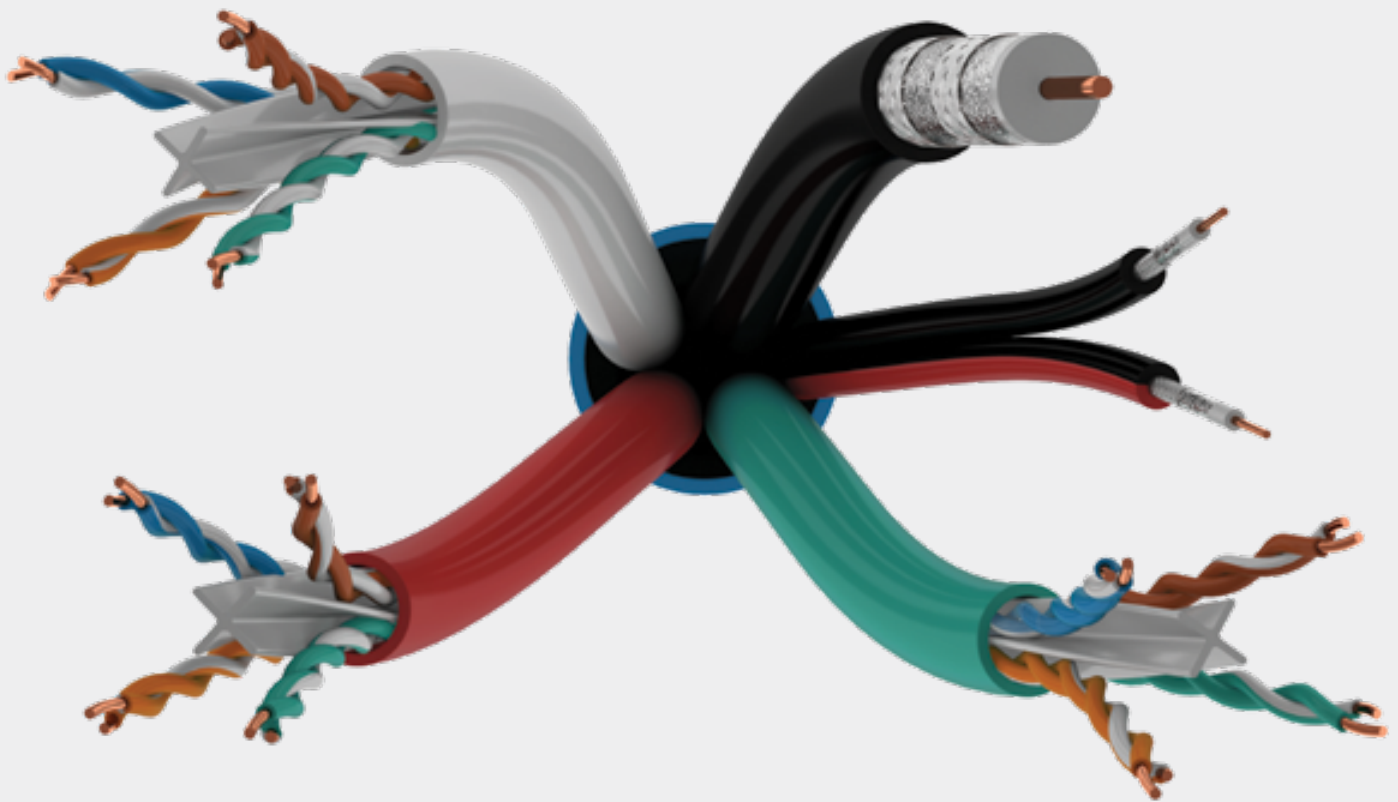
Structured Composite

Structured Wiring Support Cable for Home Automation, General Purpose Lan/CATV, Balun support, and media transmission for residential, light commercial, and institutional applications. SCP's structured or bundled cables provide a wide combination of cables under one tough jacket.

These structured cables enable faster installation times and protect against common improper installation mistakes such as exceeding bend radius, kinks, and inadvertent nicks and cuts. By combining the right combination of data, coax, speaker, and even fiber under a single jacket... you are able to future proof your residential or commercial install with one simple cable drop per room. Great for new construction and retro-fit installations.

The SCP Structured-Composite cables support many technologies for Data, CATV, Satellite, Audio, and High Definition signals. SCP Structured-Composite cable bundled configurations include: overall PVC jacket, Siamese (bonded side by side), or Triamese (bonded side by side). Please refer to cable descriptions on pages 23-25 for exact SCP Structured-Composite cable configuration.

All SCP Structured-Composite cables are In-Wall rated, NEC CM, CEC CMG FT4, RoHS, and CE. Packaged on 1000ft or 500ft spool/drum.



Features:

Smart Home Wiring Combination Cables
One Pull/One Drop Convenience
Protects Component Cables from Damage
15 Year Standard Warranty

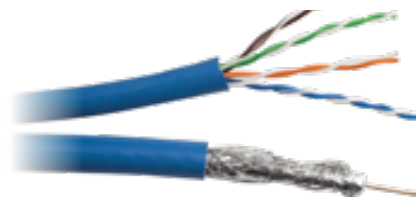
Compliance:

ETL or UL
CM, CMR CL2(R)CL3(R) c(UL) FT4
RoHS Compliant

Applications:

Structured Cabling Installations
Horizontal LAN Ethernet
CATV, Satellite, Cable, DBS
Audio, Video, Control, Analog and Digital Media

Class 2/3 Low Voltage Power

**HNC-1**

1x CAT5E 350 MHz 24 AWG Solid BC 4Pr UTP + 1x RG6/U Quad Shield
Coax 3.0 GHz 18 AWG BC -Siamese - Bonded Side-by-Side, PVC Jkt

*SCP Europe has 1x HNCPRO™ for CAT5E HDBaseT Enhanced

SCP Part No.: **HNC-1-XX**

PVC, XX = Jacket Colors: Blue, White

Packaging: 500ft / 152m Spool

Package Wt: 30.50 lbs / 13.9 kgs

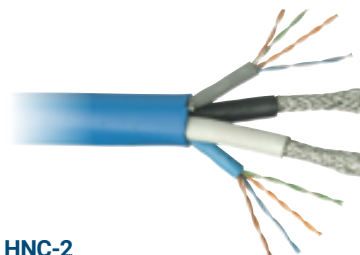
SCP Part No.: **HNC-1-1000-BL**

PVC, Jacket Colors: Blue

Packaging: 1000ft / 305m Spool

Package Wt: 57 lbs / 26 kgs

OD: 7.54+5.30±0.20mm

**HNC-2**

2x CAT5E 350 MHz 24 AWG Solid BC 4Pr UTP + 2x RG6/U Quad Shield Coax

3.0 GHz 18 AWG, Bundled Overall PVC Jkt. Available RG6/U Quad with BC or CCS

*SCP Europe has 2x HNCPRO™ for CAT5E HDBaseT Enhanced

SCP Part No.: **HNC-2**

RG6/U Quad CCS

PVC, Jacket Color: Blue

SCP Part No.: **HNC-2-BC**

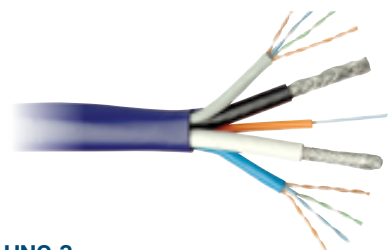
RG6/U Quad BC

PVC, Jacket Color: Blue

Packaging: 500ft / 152m Spool

Package Wt: 78 lbs / 35.5 kgs

OD: 16.9+/- 0.3mm

**HNC-3**

2x CAT5E 350 MHz 24 AWG Solid BC 4Pr UTP

+ 2x RG6/U Quad Shield Coax 3.0 GHz 18 AWG

+ 2x Multimode Fiber 62.5/125 OM1, Bundled Overall PVC Jkt

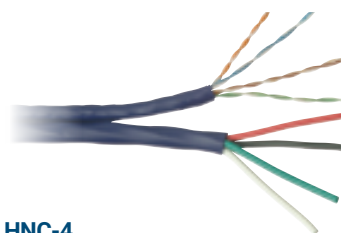
SCP Part No.: **HNC-3**

PVC, Jacket Color: Blue

Packaging: 500ft / 152m Spool

Package Wt: 85 lbs / 38.6 kgs

OD: 17.40±0.20mm

**HNC-4**

1x CAT5E 350 MHz 24 AWG Solid BC 4Pr UTP + 4c/16 AWG 65 Strand

OFC TP Speaker, Siamese- Bonded Side-by-Side- PVC Jkt

*SCP Europe has 1x HNCPRO™ for Cat5e HDBaseT Enhanced

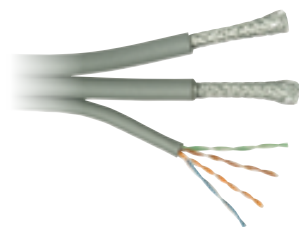
SCP Part No.: **HNC-4**

PVC, Jacket Color: Purple

Packaging: 500ft / 152m Spool

Package Wt: 41 lbs / 18.6 kgs

OD: (6.30+5.1)±0.20mm

**HNC-5**

1x CAT5E 350 MHz 24 AWG Solid BC 4Pr UTP + 2x RG6/U Quad

Shield Coax 3.0 GHz 18 AWG, Triamese -Bonded Side-by-Side, PVC Jkt

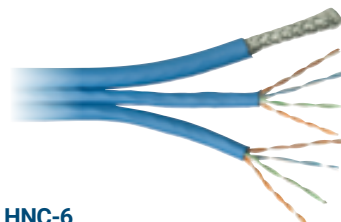
SCP Part No.: **HNC-5**

PVC, Jacket Colors: Gray

Packaging: 500ft / 152m Spool

Package Wt: 50 lbs / 22.75 kgs

OD: (7.62+7.62+5.50)±0.30mm

**HNC-6**

2x CAT5E 350 MHz 24 AWG Solid BC 4Pr UTP + 1x RG6/U Quad

Shield Coax 3.0 GHz 18 AWG, Triamese -Bonded Side-by-Side, PVC Jkt

SCP Part No.: **HNC-6**

PVC, Jacket Colors: Blue

Packaging: 500ft / 152m Spool

Package Wt: 40.5 lbs / 18.5 kgs

OD: (7.62+5.50+5.50)±0.30mm

USA STOCK
CUSTOM ORDER ONLY

USA STOCK
CUSTOM ORDER ONLY

**HNC-8**

2x CAT6 550 MHz 23 AWG Solid BC 4PR UTP + 2x RG6/U Quad Shield Coax 3.0 GHz 18 AWG, Bundled Overall PVC Jkt

*SCP Europe has 2x HNCPROPLUS™ for CAT6 HDBaseT Enhanced

SCP Part No.: **HNC-8**

PVC, Jacket Colors: Blue

Packaging: 500ft / 152m Spool

Package Wt: 100 lbs / 45.5 kgs

OD: 17.50±0.20mm

**HNC-9**

2x CAT6 550 MHz 23 AWG Solid BC 4PR UTP + 1x CAT5E 24 AWG Solid BC 4PR UTP + 2x RG6/U Quad Shield Coax 3.0 GHz 18 AWG, Bundled Overall PVC Jkt

*SCP Europe has 2x HNCPROPLUS™ for CAT6 HDBaseT Enhanced

and 1x HNCPRO™ for CAT5E HDBaseT Enhanced

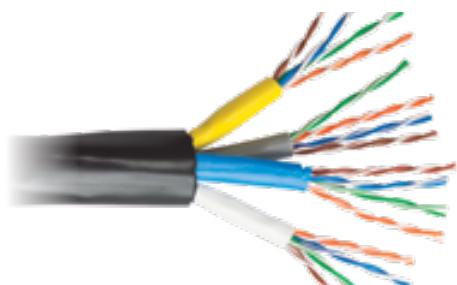
SCP Part No.: **HNC-9**

PVC, Jacket Colors: Blue

Packaging: 500ft / 152m Spool

Package Wt: 120 lbs / 54.5 kgs

OD: 19.50±0.20mm

**HNC-10**

4x CAT5E 350 MHz 24 AWG Solid BC 4Pr UTP, Bundled Overall PVC Jkt

*SCP Europe has 4x HNCPRO™ for CAT5E HDBaseT Enhanced

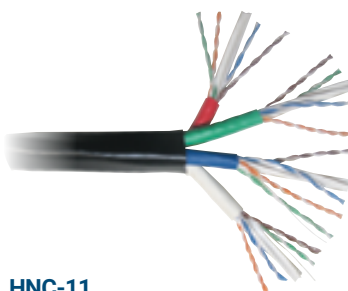
SCP Part No.: **HNC-10**

PVC, Jacket Colors: Black

Packaging: 500ft / 152m Spool

Package Wt: 67 lbs / 30.39 kgs

OD: 16.50±0.20mm

**HNC-11**

4x CAT6 550 MHz 23 AWG Solid BC 4PR UTP, Bundled Overall PVC Jkt

*SCP Europe has 4x HNCPROPLUS™ for CAT6 HDBaseT Enhanced

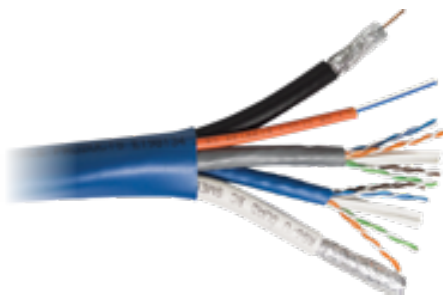
SCP Part No.: **HNC-11**

PVC, Jacket Colors: Black

Packaging: 500ft / 152m Spool

Package Wt: 92 lbs / 41.85 kgs

OD: 16.50±0.20mm

**HNC-12**

2x CAT6 550 MHz 23 AWG Solid BC 4PR UTP + 2x RG6/U Quad Shield

Coax 3.0 GHz 18 AWG + 2x Multimode Fiber 62.5/125 OM1, Bundled Overall PVC Jkt

SCP Part No.: **HNC-12**

PVC, Jacket Colors: Blue

Packaging: 500ft / 152m Spool

Package Wt: 108.29 lbs / 49.12 kgs

OD: 18.80±0.30mm

**HNC-14**

3x CAT6 550 MHz 23 AWG UTP + 1x RG6/U Quad Shield COAX 3.0 GHz 18 AWG

CCS + 1x RB-2 2C MINI RG59/U, 25 AWG Solid BC- Bundled- PVC JKT

*SCP Europe has 3x HNCPROPLUS™ for CAT6 HDBaseT Enhanced

SCP Part No.: **HNC-14**

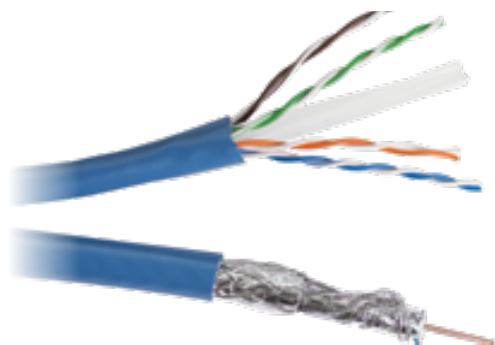
PVC, Jacket Colors: Blue

Packaging: 500ft / 152m Spool

Package Wt: 137.7 lbs / 62.5 kgs

OD: 20.20mm(0.7953")+/-0.20mm

EU STOCK
CUSTOM ORDER ONLY

**HNC-15**

1x CAT6 550 MHz 23 AWG Solid BC 4PR UTP + 1x RG6/U
Quad Shield Coax 3.0 GHz 18 AWG BC -SIAMESE-
Bonded Side-by-Side, Overall PVC Jkt

*SCP Europe has 1x HNCPROPLUS™ for Cat6 HDBaseT Enhanced

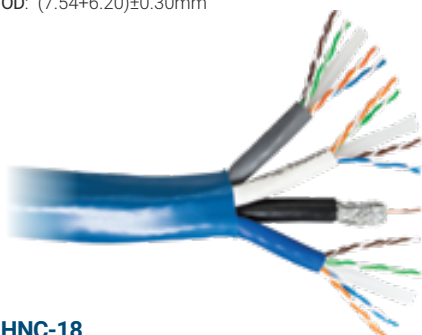
SCP Part No.: **HNC-15**

PVC, Jacket Colors: Blue

Packaging: 1000ft / 305m Spool

Package Wt: 64 lbs / 29 kgs

OD: (7.54+6.20)±0.30mm

**HNC-18**

3x CAT6 550 MHz 23 AWG Solid BC 4PR UTP
+ 1x RG6/U Quad Shield Coax 3.0 GHz 18 AWG, Bundled Overall PVC Jkt

*SCP Europe has 3x HNCPROPLUS™ for Cat6 HDBaseT Enhanced

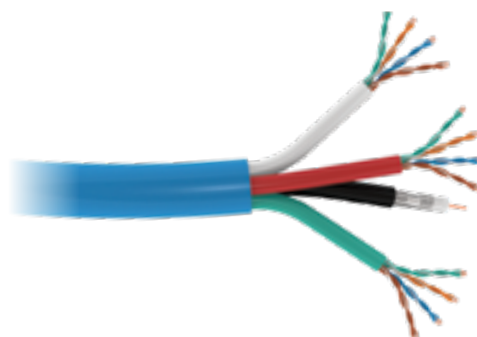
SCP Part No.: **HNC-18**

PVC, Jacket Colors: Blue

Packaging: 500ft / 152m Spool

Package Wt: 94 lbs / 43 kgs

OD: 17.5+/- 0.3mm

**HNC-16**

3x CAT5E Enhanced 350 MHz 24 AWG Solid BC, UTP
+ 1x RG6/U Quad Shield Coax 3.0 GHz 18 AWG, Bundled - PVC JKT

SCP Part No.: **HNC-16**

PVC, Jacket Colors: Blue

Packaging: 500 ft /152 m Spool

Package Wt: 75 lbs / 34 kgs

OD: 16.5+/- 0.3mm

Our HNC series reduce installation time, maintain proper bend radius, and reduce the chance of damage to the individual cables during installation. The SCP Structured-Composite cables support many technologies for Data, CATV, Satellite, Audio, and High Definition signals.



BULK CABLES | COAXIAL-VIDEO

Broadband Coax - CATV - | CCTV Coax | Serial Digital | Component RGB

SCP manufactures a full line of high quality Coax cables for both residential and commercial installations. Whether your needs require PVC, Plenum, or Direct Burial, SCP has the Coax cable that you need.



CCTV Coax

SCP has the CCTV Coax that you need. We maintain a large stock of 75 Ohm RG59/U and RG6/U95 in various packaging options. Also available is the popular Siamese (bonded side x side) with 18/2 power. These cables are UL listed with PVC or Plenum jackets. Also available is a full line of direct burial RG59/U CCTV cables.

CATV Satellite Coax

SCP has a full line of UL listed 75 Ohm RG6/U Dual Shield and Quad shield CATV Coax cables. These cables are available in PVC, Plenum, and Direct Burial rated jackets.

Serial Digital

SCP Serial Digital Coax Cables are high-bandwidth dual screen 75 Ohm RG59 and RG6 coax cables for HDTV/SDI, Digital Video/Audio, Broadcast, Broadband Video, Baseband Video, SMPTE Video, and Analog Audio/Video. SCP HDTV Digital Coax cables are the ideal choice for Pro A/V, Audio Recording, and Broadcast. RG59/UDC and RG6/UDC cables are tested to ensure optimal performance in high-end home theater installations incorporating HDTV and digital audio/video.

Both the RG59/UDC and RG6/UDC are a professional 75 Ohm cable solution providing superior signal integrity and low loss over distance. Both the SCP RG59/UDC and RG6/UDC digital coax cables are UL rated.

RGB-Component

SCP has a full line of 75 Ohm RGB and RGBHV Component cables that are perfect for all HDTV and high resolution analog applications. These cables can be used to connect RGBHV and composite video sources to projectors and displays. You can also run stereo audio and/or control signals through these cables. SCP's RGB and RGBHV high resolution cables are engineered for today's high resolution RGBHV signals requiring low loss with optimum design. SCP offers several multi-core RGB and RGBHV configurations.

Digital Line Level Audio/Video

SCP's popular RB-2 cable provides digital line level audio and video in a compact Siamese construction. This cable utilizes 2x mini RG59 coax cables that can be used for Digital or Analog Audio and Video applications. Can be substituted for twisted pair analog audio cables.



RG59/U95 CCTV Coaxial - 95% BC Braid - 75 Ohm**Features:**

CCTV Security/Video
15 Year Standard Warranty

Compliance:

UL CM/CMR/CMP
CL2/3R-P c(UL) FT 4/FT6

RoHS Compliant

Applications:

CCTV, Security
Analog Baseband Video

**RG59/U 95% Bare Copper Braid Shield - 75 Ohm - PVC**

20 AWG (0.81mm) Solid BC, 95% BC Braid, PVC Jkt

SCP Part No.: **RG59/U95-XX**

PVC, XX = Jacket Color: Black, White

Packaging: Reel In Box, Spool

Package Wt: 1000Ft / 305m : 33 lbs / 15 kgs;

500Ft / 152m : 17 lbs / 7.73 kgs

OD: 6.00±0.10mm

**RG59/U 95% Bare Copper Braid Shield - 75 Ohm - Plenum**

20 AWG (0.81mm) Solid BC, 95% BC Braid, CMP Plenum

SCP Part No.: **RG59/U95-P**

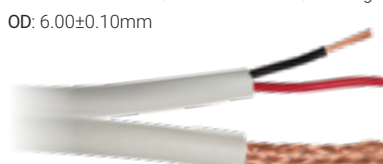
CMP, Jacket Color: White

Packaging: Reel In Box, Spool

Package Wt: 1000Ft / 305m : 26.5 lbs / 12.5 kgs;

500Ft / 152m : 13.5 lbs / 6.14 kgs

OD: 6.00±0.10mm

**Combination Coax - RG59/U 95% Bare Copper Shield + 18/2 Power - Siamese - 75 Ohm - PVC**

20 AWG (0.81mm) Solid BC, 95% BC Braid + 2C/18 AWG Power, PVC Jkt

SCP Part No.: **RG59/U95-S**

PVC, Jacket Color: Black, White

Packaging: Reel In Box, Spool

Package Wt: 1000Ft: 51 lbs / 23.2 kgs;

500Ft: 21.5 lbs / 9.8 kgs

OD: 12.00±0.10mm

**Combination Coax - RG59/U 95% Bare Copper Shield + 18/2 Power - Siamese - 75 Ohm - Plenum**

20 AWG (0.81mm) Solid BC, 95% BC Braid + 2C/18 AWG Power, CMP Jkt

SCP Part No.: **RG59/U95-S-P**

CMP, Jacket Color: White

Packaging: Spool

Package Wt: 1000Ft / 305m : 51 lbs / 23.2 kgs;

500Ft / 152m : 21.5 lbs / 9.8 kgs

OD: 12.00±0.10mm

**RG59/U CCTV Coaxial 95% CCA Braid - 75 Ohm****RG59/U COAX CCTV 95% CCA Braid**

RG59/U COAX CCTV 20 AWG BC, 95% CCA Braid

SCP Part No.: **RG59/U-CCA-XX**

PVC, XX = Jacket Color: Black, White

Packaging: Spool or Reel in Box

Package Wt: 1000Ft / 305m : 27.5 lbs / 12.5 kgs;

500ft / 152m : 14.5 lbs / 6.59 kgs

OD: 6.00±0.10mm

**RG59/U CCTV Siamese 95% CCA Braid**

RG59/U CCTV Siamese- 20 AWG BC, 95% CCA Braid + 18/2 PWR

SCP Part No.: **RG59/U-S-CCA-XX**

PVC, XX = Jacket Color: Black, White

Packaging: Spool or Reel in Box

Package Wt: 1000Ft / 305m : 43.5 lbs / 19.77 kgs;

500ft / 152m : 23 lbs / 10.45 kgs

OD: 6.2±11.7mm

RG59/U 95% Bare Copper Shield - Direct Burial - 75 Ohm**RG59/U 95% Bare Copper Shield - Direct Burial - 75 Ohm**

20 AWG (0.81mm) Solid BC, 95% BC Braid, LLDPE Jkt

SCP Part No.: **RG59/U95-DB**

LLDPE, Jacket Color: Black

Packaging: 1000Ft / 305m: Spool

Package Wt: 28.5 lbs / 13 kgs

OD: 6.00mm

**RG59/U 95% Bare Copper Shield - Direct Burial - Siamese - 75 Ohm**

20 AWG (0.81mm) Solid BC, 95% BC Braid + 2C/18 AWG Power, LLDPE Jkt

SCP Part No.: **RG59/U-S-DB**

LLDPE, Jacket Color: Black

Packaging: Spool

Package Wt: 1000Ft / 305m : 45 lbs / 20.45 kgs;

500ft / 152m : 26.7 lbs / 12.1 kgs

OD: 6.2±11.7mm

RG6/U95 CCTV COAX - Bare Copper - 75 Ohm**Features:**

CCTV Security/Video
15 Year Standard Warranty

Compliance:

UL CM/CMR/CMP
CL2R/CL3R-P c(UL) FT4/FT6
RoHS Compliant

Applications:

CCTV, Security Baseband Video
Analog Baseband Video

**RG6/U 95% Bare Copper Braid Shield - 75 Ohm - PVC or Plenum**

18 AWG (1.02mm) Solid BC, 95% BC Braid

SCP Part No.: **RG6/U95-BK**

PVC, Jacket Color: Black - Box

SCP Part No.: **RG6/U95-P**

Plenum, Jacket Color: White

Packaging: 1000 Ft / 305m: Spool

Package Wt: 30 lbs / 13.6 kgs

OD: 6.91mm

**Combination Coax - RG6/U 95% Bare Copper Shield + 18/2 Power - Siamese – 75 Ohm - PVC or Plenum**

18 AWG (0.81mm) Solid BC, 95% BC Braid + 2C/18 AWG Power

SCP Part No.: **RG6/U95-S-BK**

PVC, Jacket Color: Black

SCP Part No.: **RG6/U95-S-P**

Plenum, Jacket Color: White

Packaging: 1000 Ft / 305m: Spool

Package Wt: 58 lbs / 26.36 kgs

OD: 6.91±4.6mm

RG6/U Dual Shield CATV BARE COPPER (BC) - 75 Ohm - Bonded AL Foil + 60% AL Braid - Sweep Tested to 3.0 GHz**Features:**

CATV - Sunlight Resistant – Except CMP
Sweep Tested to 3 GHz

Compliance:

UL CM/CMR/CMP
CL2R/CL3R-P c(UL) FT 4/FT6
RoHS Compliant

Applications:

CATV, Satellite, Cable,
Cable Modem

**RG6/U Bare Copper - CATV 75 Ohm - PVC**

18 AWG (1.02mm) Solid BC, Bonded AL Foil, 60% AL Braid, PVC Jkt

SCP Part No.: **RG6/U-BC-XX**

PVC, XX= Jacket Color: Black, White

Packaging: Box

Package Wt: 1000 Ft / 305m : 30 lbs / 13.6 kgs;

500Ft / 152m : 16 lbs / 7.3 kgs

OD: 6.91±0.10mm

**RG6/U Bare Copper - Siamese - CATV 75 Ohm - PVC**

(2x) 18 AWG (1.02mm) Solid BC, Bonded AL Foil, 60% AL Braid Siamese - Bonded Side-by-Side, PVC Jkt

SCP Part No.: **RG6/U-S-BC**

PVC, Jacket Color: Black

Packaging: Spool

Package Wt: 500Ft: 32.8 lbs / 15 kgs

OD: 6.91 + 6.91

**RG6/U Bare Copper with Messenger - CATV 75 Ohm - PVC**

18 AWG (1.02mm) Solid BC, Bonded AL Foil, 60% AL Braid + Messenger

Wire- Bonded Side-by-Side

SCP Part No.: **RG6/U-BC-MES**

PVC, Jacket Color: Black

Packaging: 500 ft/ 152m: Spool

Package Wt: 23.5 lbs / 10.7 kgs

OD: 6.91 + 1.15

**RG6/U Bare Copper with Messenger - Siamese - CATV 75 Ohm - PVC**

(2x) 18 AWG (1.02mm) Solid BC, Bonded AL Foil, 60% AL Braid + Messenger

Wire- Bonded Side-by-Side

SCP Part No.: **RG6/U-S-BC-MES**

PVC, Jacket Color: Black

Packaging: 500 Ft/ 152m: Spool

Package Wt: 35 lbs / 16 kgs

OD: 6.91 + 1.15

RG6/U Dual Shield CATV Copper Clad Steel (CCS) - 75 Ohm - Bonded AL Foil + 60% AL Braid - Sweep Tested to 3.0 GHz**RG6/U CCS - CATV 75 Ohm - PVC**

18 AWG (1.02mm) Solid CCS, Bonded AL

Foil, 60% AL Braid, PVC Jkt

SCP Part No.: **RG6/U-CCS-XX**

PVC, XX = Jacket Color: Black, White

Packaging: Box, Spool

Package Wt: 1000 Ft / 305m: : 29.5 lbs / 13.4 kgs;

500Ft / 152m: : 15.7 lbs / 7.1 kgs

OD: 6.91±0.10mm

**RG6/U CCS - Siamese - CATV 75 Ohm - PVC**

(2x) 18 AWG (1.02mm) Solid CCS, Bonded AL Foil,

60% AL Braid Siamese - Bonded Side-by-Side, PVC Jkt

SCP Part No.: **RG6/U-S-CCS-BK-RIB**

CMP, Jacket Color: Black

Packaging: 500Ft/ 152m: Reel In Box

Package Wt: 38.5 lbs / 17.5 kgs

OD: 6.91 + 6.91mm

**RG6/U CCS - CATV 75 Ohm - Plenum**

18 AWG (1.02mm) Solid CCS, Bonded AL Foil,

60% AL Braid, CMP

SCP Part No.: **RG6/U-P**

PVC, Jacket Color: White

Packaging: 1000 Ft/ 305m: Spool

Package Wt: 27 lbs / 12.3 kgs

OD: 5.84±0.10mm

RG6/U Dual Shield CATV - Direct Burial - 75 Ohm - Bonded AL Foil + 60% AL Braid - Gel Filled**RG6/U Direct Burial - CATV - 75 Ohm**

18 AWG (1.02mm) Solid CCS, Bonded AL Foil,

60% AL Braid, Gel Filled, PE Jkt

SCP Part No.: **RG6/U-DB**

PE, Jacket Color: Black

Packaging: 1000 Ft/ 305m: Spool

Package Wt: 24 lbs / 11 kgs

OD: 6.91±0.10mm

RG6/U Quad Shield CATV - Bare Copper (BC) - 75 Ohm**RG6 Quad Shield - Bare Copper - CATV 75 Ohm - PVC**

18 AWG (1.02mm) Solid BC, AL Foil, 60/40% AL Braid, PVC Jkt

SCP Part No.: **RG6/UQ-BC-XX**

PVC, XX = Jacket Color: Black, White

Packaging: Box, Spool

Package Wt: 1000Ft / 305m: : 38 lbs / 17.27 kgs;

500Ft / 152m: : 19 lbs / 8.6 kgs

OD: 7.54±0.10mm

**RG6 Quad Shield - Bare Copper - Siamese - CATV 75 Ohm - PVC**

(2x) 18 AWG (1.02mm) Solid BC, AL Foil, 60/40% AL Braid, PVC Jkt

SCP Part No.: **RG6/UQ-S-BC-XX**

PVC, XX = Jacket Color: Black, White

Packaging: 500Ft / 152m: Spool

Package Wt: 35.8 lbs / 16.3 kgs

OD: 7.54 +7.54±0.20mm

**RG6 Quad Shield - Bare Copper - CATV 75 Ohm - Plenum**

18 AWG (1.02mm) Solid BC, AL Foil, 60/40% AL Braid, CMP

SCP Part No.: **RG6/UQ-P-SPL**

CMP, Jacket Color: White

Packaging: 1000Ft / 305m: Spool

Package Wt: 35 lbs / 16 kgs

OD: 7.54±0.10mm

RG6/U Quad Shield CATV – Copper Clad Steel (CCS) - 75 Ohm 2x AL Foil + 2x 60/40 AL Braid -Sweep Tested to 3.0 GHz**RG6 Quad Shield - CCS - CATV 75 Ohm - PVC**

18 AWG (1.02mm) Solid CCS, AL Foil, 60/40% AL Braid

SCP Part No.: **RG6/UQ-CCS-XX**

PVC, XX = Jacket Color: Black, White

Packaging: Box, Reel-In-Box, Spool

Package Wt: 1000Ft / 305m : 36 lbs / 16.36kgs;

500Ft / 152m : 18.75lbs / 8.5kgs

OD: 7.54±0.10mm

RG6 Quad Shield - Siamese - CATV 75 Ohm - PVC

(2x) 18 AWG (1.02mm) Solid CCS, AL Foil, 60/40% AL Braid, PVC Jkt

SCP Part No.: **RG6/UQ-S-CCS-XX**

PVC, XX = Jacket Color: Black, White

Packaging: 500Ft / 152m: Spool

Package Wt: 35.8 lbs / 16.3 kgs

OD: 7.54 +7.54±0.20mm

RG6/U Quad Shield CATV - Direct Burial - 75 Ohm Bonded AL Foil + 60%/40% AL Braid**RG6 Quad Shield - Direct Burial - (BC) - CATV 75 Ohm**

18 AWG (1.02mm) Solid BC, AL Foil, 60/40% AL Braid, PE Jkt

SCP Part No.: **RG6/UQ-DB**

PVC, Jacket Color: Black

Packaging: 1000Ft / 305m: Spool

Package Wt: 29.36 lbs/13.5 kgs

OD: 7.54 ±0.10mm

**RG6 Quad Shield - Direct Burial - (CCS) - CATV 75 Ohm**

18 AWG (1.02mm) Solid CCS, AL Foil, 60/40% AL Braid, PE Jkt

SCP Part No.: **RG6/UQ-DB-CCS**

PVC, Jacket Color: Black

Packaging: 1000Ft / 305m: Spool

Package Wt: 29.36 lbs/13.5 kgs

OD: 7.54 ±0.10mm

RG11/U Dual Shield CATV Copper Clad Steel (CCS) - 75 Ohm**RG11/U CCS - CATV 75 Ohm - PVC**

14 AWG (1.63mm) Solid CCS, Bonded AL Foil, 60% AL Braid, PVC Jkt

SCP Part No.: **RG11/U**

PVC, Jacket Color: Black

Packaging: 1000Ft / 305m: Spool

Package Wt: 58.5 lbs / 26.6 kgs

OD: 10.03±0.10mm

Serial Digital COAX - 75 Ohm

Features:

Pro Video / Serial Digital SDI

Compliance:

UL CM c(UL) FT 4
RoHS Compliant

Applications:

Serial Digital Video SMPTE, AES3id Digital Audio
S/PDIF Digital Audio

Permanent or Semi-Permanent Installations

**RG59/U Serial Digital Coax**

Dual Shield - 75 Ohm

20 AWG Solid BC, 100% Bonded AL Foil,
95% TC Braid Shield, Transparent PVC JktSCP Part No.: **RG59/UDC-XX**

PVC, XX= Jacket Colors: Blue, Green, Red, White, Yellow

Packaging: 500ft/152m Reel in Box

Package Wt: 17.5 lbs / 8.0 kgs

OD: 6.00±0.10 mm

**RG6/U Serial Digital Coax**

Dual Shield - 75 Ohm

18 AWG Solid BC, 100% Bonded AL Foil,
95% TC Braid Shield, Transparent PVC JktSCP Part No.: **RG6/UDC-XX**

PVC, XX= Jacket Colors: Blue, Green, Red, White, Yellow

Packaging: 500ft/152m Spool

Package Wt: 21 lbs / 9.55 kgs

OD: 6.91±0.10 mm

**RG6/U HDTV Serial Digital Coax
DIRECT BURIAL**3.0 GHz Direct Burial - 18 AWG BC, 100% AL Foil,
95% TC Braid, Gel Filled LLDPE JktSCP Part No.: **RG6/UDC-DB**

LLDPE, Jacket Color: Black

Packaging: 500ft/ 152 m Reel in Box

Package Wt: 26.00 lbs / 11.82 kgs

OD: 6.91±0.10 mm

EU STOCK
CUSTOM ORDER ONLY**EU STOCK**
CUSTOM ORDER ONLY**EU STOCK**
CUSTOM ORDER ONLY

RGB – Component – HDTV Analog Video - 75 Ohm

**RGB Cable – 3 Conductors**

HDTV Component- Mini RG59/U

Enhanced 3 GHz - 75 Ohm

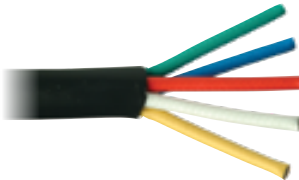
(3x) Mini RG59/U Coax 25 AWG Solid BC,
Bonded AL Foil, 95% TC Braid Shield,
Red, Green, Blue, PVC JacketSCP Part No.: **RGB-3**

PVC, Jacket Color: Black

Packaging: 250ft/76m Spool

Package Wt: 41.5 lbs / 18.9 kgs

OD: 11.00±0.20 mm

**RGB Cable – 5 Conductors**

HDTV Component- Mini RG59/U

Enhanced 3 GHz - 75 Ohm

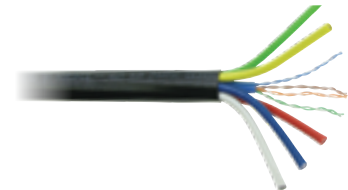
(5x) Mini RG59/U Coax 25 AWG Solid BC,
Bonded AL Foil, 95% TC Braid Shield,
Red, Green, Blue, Yellow, White, PVC JacketSCP Part No.: **RGB-5**

PVC, Jacket Color: Black

Packaging: 500ft/152m Spool

Package Wt: 33 lbs / 15 kgs

OD: 13.00±0.20 mm

**RGB Cable – 5 Conductor RGB + (1) Cat5e**

HDTV Component- Mini RG59/U

Enhanced 3 GHz - 75 Ohm

(5x) Mini RG59/U Coax 25 AWG Solid BC,
Bonded AL Foil, 95% TC Braid Shield + (1)
Cat5e 24 AWG BC 4PR UTP, Overall PVCSCP Part No.: **RGB-6**

PVC, Jacket Colors: Black

Packaging: 500ft/152m Spool

Package Wt: 43.5 lbs / 19.8 kgs

OD: 16.00±0.20 mm

USA STOCK
CUSTOM ORDER ONLY**USA STOCK**
CUSTOM ORDER ONLY**USA STOCK**
CUSTOM ORDER ONLY

Digital Line Level Audio/Video - 75 Ohm

Features:

Coax-Digital Audio SPDIF and Analog Audio/Video
Superior Flexibility

Compliance:

UL CM/CMR CL2R/CL3R c(UL) FT 4
RoHS Compliant

Applications:

Balanced Line Level Audio, Microphone,
Serial Control/Audio
Class 2/3 Low Voltage PowerResidential/Commercial/Institutional
Permanent or Semi-Permanent Installations**Digital/Analog Audio Coax – 75 Ohm**

Line Level Digital/Analog Audio, Analog Video - 75 Ohm

Can be substituted for Twisted Pair Analog Audio

2x Mini RG59/U 25 AWG BC Dual Shield Bonded AL Foil, 95% TC Braid,
Siamese-Bonded Side-by-Side, Black/Red PVC JktSCP Part No.: **RB-2**

PVC, Jacket Colors: Siamese Black and Red

Packaging: 500ft / 152m Spool

Package Wt: 18.5 lbs / 8.4 kgs

OD: 11.00±0.20 mm

EU STOCK
CUSTOM ORDER ONLY

BULK CABLES | SECURITY, SOUND, & ALARM

Security Coil Packs | Non-Plenum Unshielded | Non-Plenum Shielded Plenum Unshielded | Plenum Shielded | Direct Burial | Line Level Audio Access Control Bundled

Common applications include wiring for intercoms, security systems, audio systems, background music systems, and power-limited control circuits. SCP stocks a wide assortment from 12 AWG to 22 AWG and 2 to 12 conductors. SCP security cables are available in stranded and solid bare copper conductors, shielded and unshielded, and configured for Plenum or Riser rated installations. Our multipurpose security, sound, & alarm cables are UL rated.

Security Coil Packs

SCP's Security Wire Coil Packs are very popular with installers because they are easier to work with than boxes or reels. These security wire coil packs come in 22 AWG with either stranded or solid bare copper conductors. These coil packs are available in 500 or 1000 ft lengths. SCP Security Wire Coil Packs are tangle-proof, take up less space, and because there is no box or spool, there is less waste and clean-up after the job.

Installation of our Security Wire Coil Packs saves time when pulling multiple wires. Because the wire pulls through the middle of the coil pack, installers can stack the coil packs and pull multiple wires in parallel for faster installation. SCP Security Wire Coil Packs with stranded or solid conductors are available in 9 different PVC jacket colors. Our security wire coil packs are great for security, alarm, and control installations. All of our security wire coil packs are UL and Riser Rated.



NON-PLENUM - Unshielded/Shielded

SCP is a leading brand for your multi-purpose security, sound, and alarm cables. We feature a full line of non-plenum multi-conductor cables both unshielded and shielded in cable sizes from 12- 22 AWG. Our non-plenum security cables are UL CMR riser rated

PLENUM - Unshielded/Shielded

For Plenum applications, SCP has a full line of CMP rated multi-purpose security, sound and alarm cables. Our multi-conductor cables are available in unshielded and shielded in cable sizes from 12-22 AWG. Our plenum security cables are UL CMP rated.

Line Level Analog Audio

SCP's Line Level Analog Audio cables are "balanced" high performing audio and control distribution cables for a wide range of AV applications. These cables provide superior signal-to-noise ratio and will maintain high signal levels over distance.

SCP Line Level Analog Audio cables are to be used only in permanent or semi-permanent installations. These Line Level Analog cables are available in one or two individually foil-shielded, twisted pairs with color coded conductors (red/black + green/white); and a flexible PVC jacket that is easy to handle, strip, and terminate.

ACCESS CONTROL

In addition to brand specific control systems, SCP manufactures Universal Automation/Control cables for many other systems and needs. Our Access Control cables are designed to be compatible for many applications that you may encounter. Additionally, our bundled or structured cable line, provides you with many options to cost effectively and efficiently complete your installation.

SCP Security Wire Coil Packs with stranded or solid conductors are available in 9 different PVC jacket colors. Our security wire coil packs are great for security, alarm and control installations. All of our security wire coil packs are UL and Riser Rated.

SECURITY COIL PACKS

Features:

Stranded & Solid Bare Copper
Twisted Pair Construction
Voltage Rating: 300V
Temperature: 75°C

Compliance:

UL- c(UL) Listed
CMR/CL3R
NEC Article 760
Flame Rating: UL 1666, FT4

RoHS Compliant

Applications:

Security, Alarm, Intercom, , and
Power-Limited Control Systems



SECURITY BURGLAR ALARM CABLE COIL PACKS

RISER RATED: CMR CL3R, C(UL) FT4 --- SOLID OR STRANDED BARE COPPER

FASTER INSTALLS

By stacking the tangle-proof Coil Packs and pulling through the center, you can pull multiple wire colors in parallel for faster installs.

EASY CLEAN-UP

No box or spool means less waste and easy clean up.

Coil Packs - Solid Copper Conductors 300V 75°C

Available PVC Jacket Colors: Beige, Black, Blue, Brown, Green, Gray, Orange, White, Yellow

XX = Jacket Color Code

SCP Part Number	AWG/Cond	Strand	OD (inch)	OD (mm)	Length (ft)	Length (M)	Jacket Color	Packaging	Package Weight lbs	Package Weight kgs
22/2SOL-COIL-XX	22/2	SOL	0.072	1.83	500	152	various	Coil	3.50	1.59
22/2SOL-COIL-WT-1000	22/2	SOL	0.072	1.83	1000	305	WT	Coil	6.80	3.09
22/4SOL-COIL-XX	22/4	SOL	0.082	2.08	500	152	various	Coil	6.20	2.82

Coil Packs – Stranded Copper Conductors

Available PVC Jacket Colors: Beige, Black, Blue, Brown, Green, Gray, Orange, White, Yellow

SCP Part Number	AWG/Cond	Strand	OD (inch)	OD (mm)	Length (ft)	Length (M)	Jacket Color	Packaging	Package Weight lbs	Package Weight kgs
22/2COIL-XX	22/2	7/0.0097	0.084	2.13	500	152	various	Coil	3.80	1.73
22/2-COIL-WT-1000	22/2	7/0.0097	0.084	2.13	1000	305	WT	Coil	7.80	3.55
22/4-COIL-XX	22/4	7/0.0097	0.097	2.46	500	152	various	Coil	7.00	3.18

MULTI-PURPOSE NON-PLENUM UNSHIELDED

Features:

Stranded & Solid Bare Copper
Twisted Pair Construction
Voltage Rating: 300V
Temperature: 75°C

Compliance:

UL- c(UL) Listed
CMR/CL3R
NEC Article 760
Flame Rating: UL 1666, FT4

RoHS Compliant

Applications:

Security, Alarm, Intercom, , and
Power-Limited Control Systems



NON-PLENUM UNSHIELDED

RISER RATED: CMR CL3R, C(UL) FT4

AVAILABLE: 22AWG TO 14 AWG

STRANDED OR SOLID BARE COPPER CONDUCTORS

22 AWG Unshielded PVC 300 V 75°C

XX = Jacket Color Code

SCP Part Number	AWG/Cond	Strand	OD (inch)	OD (mm)	Length (ft)	Length (M)	Jacket Color	Packaging	Package Weight lbs	Package Weight kgs
22/2-XX	22/2	7/0.0097	0.128	3.25	1000	305	GY, WT	BOX	9.00	4.09
22/2-WT-500	22/2	7/0.0097	0.128	3.25	500	152	WT	BOX	4.50	2.05
22/2SOL-WT	22/2	SOL	0.122	3.10	1000	305	WT	BOX	13.00	5.91
22/2SOL-WT-500	22/2	SOL	0.122	3.10	500	152	WT	BOX	6.50	2.95
22/2ZIP-1000	22/2	7/0.0097	0.13x0.75	3.3x1.9	1000	305	WT	BOX	9.26	4.21

22 AWG Unshielded PVC 300 V 75°C - Continued

SCP Part Number	AWG/Cond	Strand	OD (inch)	OD (mm)	Length (ft)	Length (M)	Jacket Color	Packaging	Package Weight lbs	Package Weight kgs
22/4-XX	22/4	7/0.0097	0.148	3.76	1000	305	GY, WT	BOX	15.00	6.82
22/4-WT-500	22/4	7/0.0097	0.148	3.76	500	152	WT	BOX	8.00	3.64
22/4SOL-WT	22/4	SOL	0.141	3.58	1000	305	WT	BOX	13.00	5.91
22/4SOL-WT-500	22/4	SOL	0.141	3.58	500	152	WT	BOX	7.00	3.18
22/6-XX	22/6	7/0.0097	0.177	4.50	1000	305	GY, WT	BOX	20.00	9.09
22/6-GY-500	22/6	7/0.0097	0.177	4.50	500	152	GY	BOX	10.00	4.55
22/8-GY	22/8	7/0.0097	0.192	4.88	1000	305	GY	BOX	26.00	11.82
22/8-GY-500	22/8	7/0.0097	0.192	4.88	500	152	GY	BOX	13.00	5.91
22/10-500	22/10	7/0.0097	0.226	5.74	500	152	WT	SPOOL	41.00	18.64
22/12-500	22/12	7/0.0097	0.233	5.92	500	152	WT	SPOOL	47.00	21.36

18 AWG - 14 AWG Unshielded PVC 300 V 75°C

SCP Part Number	AWG/Cond	Strand	OD (inch)	OD (mm)	Length (ft)	Length (M)	Jacket Color	Packaging	Package Weight lbs	Package Weight kgs
18/2-XX	18/2	16/0.010	0.173	4.40	1000	305	GY, WT	BOX	20.25	9.20
18/2-XX-500	18/2	16/0.010	0.173	4.40	500	152	GY, WT	BOX	11.00	5.00
18/4-XX	18/4	16/0.010	0.188	4.78	1000	305	GY, WT	BOX	32.00	14.55
18/4-XX-500	18/4	16/0.010	0.188	4.78	500	152	GY, WT	BOX	16.50	7.50
18/6-GY	18/6	16/0.010	0.226	5.75	1000	305	GY	SPOOL	56.00	25.45
18/6-GY-500	18/6	16/0.010	0.226	5.75	500	152	GY	BOX	29.00	13.18
18/8-GY	18/8	16/0.010	0.248	6.30	1000	305	GY	SPOOL	59.00	26.82
16/2-GY	16/2	26/0.010	0.184	4.67	1000	305	GY	BOX	25.00	11.36
16/4-GY	16/4	26/0.010	0.216	5.49	1000	305	GY	BOX	51.00	23.18
14/2-GY	14/2	19/0.015	0.234	5.94	1000	305	GY	BOX	39.00	17.73
14/4-GY	14/4	19/0.015	0.276	7.01	1000	305	GY	SPOOL	73.00	33.18

MULTI-PURPOSE NON-PLENUM SHIELDED

Features:
Stranded & Solid Bare Copper
Twisted Pair Construction
Voltage Rating: 300V
Temperature: 75°C

Compliance:

UL- c(UL) Listed
CMR/CL3R
NEC Article 760
Flame Rating: UL 1666, FT4

RoHS Compliant

Applications:

Security, Alarm, Intercom, Sound & Audio, and
Power-Limited Control Systems



NON-PLENUM SHIELDED

RISER RATED: CMR CL3R, C(UL) FT4

AVAILABLE: 22AWG TO 12 AWG

STRANDED OR SOLID BARE COPPER CONDUCTORS

SHIELDING: OVERALL AL MYLAR W/DRAIN

PVC JACKET

XX = Jacket Color Code

22 AWG – 14 AWG Shielded PVC 300 V 75°C

SCP Part Number	AWG/Cond	Strand	OD (inch)	OD (mm)	Length (ft)	Length (M)	Jacket Color	Packaging	Package Weight lbs	Package Weight kgs
22/2SH-GY	22/2	7/0.0097	0.092	2.34	1000	305	GY	BOX	10.5	4.77
22/4SH-GY	22/4	7/0.0097	0.152	3.86	1000	305	GY	BOX	15	6.82
22/4SH-GY-500	22/4	7/0.0097	0.152	3.86	500	152	GY	BOX	8	3.64
22/6SH-XX	22/6	7/0.0097	0.179	4.55	1000	305	GY, WT	BOX	29	13.18
22/6SH-500	22/6	7/0.0097	0.179	4.55	500	152	GY	BOX	15	6.82
22/8SH-XX	22/8	7/0.0097	0.196	4.98	1000	305	GY, WT	BOX	32	14.55

22 AWG – 14 AWG Shielded PVC 300 V 75°C - Continued

XX = Jacket Color Code

SCP Part Number	AWG/Cond	Strand	OD (inch)	OD (mm)	Length (ft)	Length (M)	Jacket Color	Packaging	Package Weight lbs	Package Weight kgs
22/10SH-GY	22/10	7/0.0097	0.230	5.84	1000	305	GY	BOX	38	17.27
18/2SH-GY	18/2	16/0.010	0.165	4.19	1000	305	GY	BOX	22	10.00
18/4SH-GY	18/4	16/0.010	0.192	4.88	1000	305	GY	SPOOL	37	16.82
18/4SH-GY-500	18/4	16/0.010	0.192	4.88	500	152	GY	BOX	19	8.64
18/6SH-GY	18/6	16/0.010	0.230	5.84	1000	305	GY	SPOOL	61	27.73
18/6SH-GY-500	18/6	16/0.010	0.230	5.84	500	152	GY	BOX	32	14.55
18/8SH-GY	18/8	16/0.010	0.270	6.86	1000	305	GY	SPOOL	64	29.09
16/2SH-GY	16/2	26/0.010	0.188	4.78	1000	305	GY	BOX	32	14.55
16/4SH-GY	16/4	26/0.010	0.200	5.08	1000	305	GY	SPOOL	58	26.36
14/2SH-GY	14/2	19/0.015	0.238	6.05	1000	305	GY	SPOOL	53	24.09
14/4SH-GY	14/4	19/0.015	0.292	7.42	1000	305	GY	SPOOL	66	30.00

MULTI-PURPOSE PLENUM - UNSHIELDED

Features:

Stranded & Solid Bare Copper
Twisted Pair Construction
Voltage Rating: 300V
Temperature: 75°C

Compliance:

UL- c(UL) Listed
Plenum CMP/CL3P/FPLP
NEC Article 760
Flame Rating: UL 1666, FT6

RoHS Compliant

Applications:

Security, Alarm, Intercom, Sound & Audio, Background
Music, and Power-Limited Control Systems Commercial/
Institutional Installations requiring CMP rated cables



PLENUM UNSHIELDED

RISER RATED: CMP CL3P, FPLP, C(UL) FT6

AVAILABLE: 22AWG TO 12 AWG

STRANDED OR SOLID BARE COPPER CONDUCTORS

22 AWG - 12 AWG Unshielded Plenum 300 V 75°C

SCP Part Number	AWG/Cond	Strand	OD (inch)	OD (mm)	Length (ft)	Length (M)	Jacket Color	Packaging	Package Weight lbs	Package Weight kgs
22/2P	22/2	7/0.0097	0.132	3.35	1000	305	WT	SPOOL	13	5.91
22/4P	22/4	7/0.0097	0.150	3.81	1000	305	WT	SPOOL	20	9.09
22/4P-500	22/4	7/0.0097	0.150	3.81	500	152	WT	BOX	10.5	4.77
22/6P	22/6	7/0.0097	0.178	4.52	1000	305	WT	SPOOL	26	11.82
22/8P	22/8	7/0.0097	0.193	4.90	1000	305	WT	SPOOL	37	16.82
22/12P	22/12	7/0.0097	0.212	5.38	1000	305	WT	SPOOL	46	20.91
18/2P	11/2	7/0.0152	0.162	4.11	1000	305	WT	SPOOL	23	10.45
18/2P-500	18/2	7/0.0152	0.162	4.11	500	152	WT	BOX	12	5.45
18/4P	18/4	7/0.0152	0.191	4.85	1000	305	WT	SPOOL	37	16.82
18/4P-500	18/4	7/0.0152	0.191	4.85	500	152	WT	BOX	19	8.64
18/6P	18/6	7/0.0152	0.229	5.82	1000	305	WT	SPOOL	56	25.45
18/8P	18/8	7/0.0152	0.259	6.58	1000	305	WT	SPOOL	66	30.00
16/2P	16/2	19/0.0126	0.187	4.75	1000	305	WT	SPOOL	33	15.00
16/4P	16/4	19/0.0126	0.218	5.54	1000	305	WT	SPOOL	59	26.82
14/2P	14/2	19/0.015	0.229	5.82	1000	305	WT	SPOOL	54	24.55
14/4P	14/4	19/0.015	0.264	6.71	1000	305	WT	SPOOL	86	39.09
12/2P	12/2	19/0.018	0.263	6.68	1000	305	WT	SPOOL	68	30.91

MULTI-PURPOSE PLENUM - SHIELDED

Features:

Stranded & Solid Bare Copper
Twisted Pair Construction
Voltage Rating: 300V
Temperature: 75°C

Compliance:

UL- c(UL) Listed
Plenum CMP/CL3P/FPLP
NEC Article 760
Flame Rating: UL 1666, FT6

RoHS Compliant

Applications:

Security, Alarm, Intercom, Sound & Audio, Background
Music, and Power-Limited Control Systems Commercial/
Institutional Installations requiring CMP rated cables



PLENUM SHIELDED

RISER RATED: CMP CL3P, FPLP, C(UL) FT6

AVAILABLE: 22AWG TO 12 AWG

STRANDED OR SOLID BARE COPPER CONDUCTORS

SHIELDING: OVERALL AL MYLAR W/DRAIN

22 AWG - 12 AWG Shielded Plenum 300 V 75°C

SCP Part Number	AWG/Cond	Strand	OD (inch)	OD (mm)	Length (ft)	Length (M)	Jacket Color	Packaging	Package Weight lbs	Package Weight kgs
22/2SHP	22/2	7/0.0097	0.132	3.35	1000	305	WT	BOX	13	5.91
22/4SHP	22/4	7/0.0097	0.150	3.81	1000	305	WT	BOX	20	9.09
22/4SHP-500	22/4	7/0.0097	0.150	3.81	500	152	WT	BOX	11	5.00
22/6SHP	22/6	7/0.0097	0.178	4.52	1000	305	WT	BOX	26	11.82
22/6SHP-500	22/6	7/0.0097	0.178	4.52	500	152	WT	BOX	14	6.36
22/8SHP	22/8	7/0.0097	0.193	4.90	1000	305	WT	BOX	37	16.82
18/2SHP	18/2	7/0.0152	0.162	4.11	1000	305	WT	BOX	23	10.45
18/4SHP	18/4	7/0.0152	0.191	4.85	1000	305	WT	SPOOL	37	16.82
18/4SHP-500	18/4	7/0.0152	0.191	4.85	500	152	WT	BOX	18	8.18
18/6SHP	18/6	7/0.0152	0.229	5.82	1000	305	WT	SPOOL	56	25.45
18/6SHP-500	18/6	7/0.0152	0.229	5.82	500	152	WT	BOX	29	13.18
18/8SHP	18/8	7/0.0152	0.259	6.58	1000	305	WT	SPOOL	66	30.00
16/2SHP	16/2	19/0.0126	0.187	4.75	1000	305	WT	SPOOL	33	15.00
16/4SHP	16/4	19/0.0126	0.218	5.54	1000	305	WT	SPOOL	59	26.82
14/2SHP	14/2	19/0.015	0.229	5.82	1000	305	WT	SPOOL	54	24.55
12/2SHP	12/2	19/0.018	0.263	6.68	1000	305	WT	SPOOL	68	30.91

Line Level Analog Audio

Features:

Analog Audio/Video
Twisted Pair-Balance Line Level Analog Audio
Superior Flexibility

Compliance:

UL CM/CMR CL2(R)/CL3(R) c(UL) FT 4
RoHS Compliant
LSZH: IEC 60332-1

Applications:

Balanced Line Level Audio, Microphone,
Serial Control/Audio
Class 2/3 Low Voltage Power

Residential/Commercial/Institutional
Permanent or Semi-Permanent Installations

Twisted Pair Balanced Line Level Audio
2 Conductor Shielded w/Drain

2c/22 AWG TC Twisted Pair-Black/Red,
Overall AL Foil Shield w/Drain

SCP Part No.: **22/2ESH**

PVC, Jacket Colors: Gray

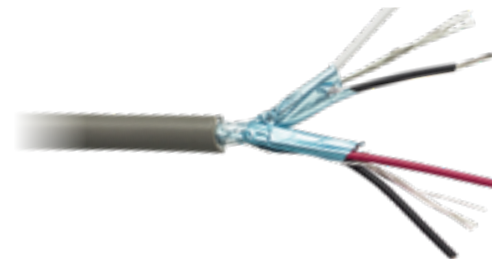
SCP Part No.: **22/2ESH-LSZH**

LSZH, Jacket Color: Gray

Packaging: 500ft / 152m Spool

Package Wt: 14.3 lbs / 6.5 kgs

OD: 3.40±0.10mm

Twisted Pair Balanced Line Level Audio
4 Conductor Each Pair Shielded

4c/22 AWG TC Twisted Pair-Black/Red+Green/White,
Each Pair AL Foil Shield w/Drain, Overall Jacket

SCP Part No.: **22/4EPSH**

PVC, Jacket Colors: Gray

SCP Part No.: **22/4EPSH-LSZH**

LSZH, Jacket Color: Gray

Packaging: 500ft / 152m Spool

Package Wt: 24 lbs / 10.9 kgs

OD: 4.30±0.10mm

ACCESS CONTROL BUNDLED

Features:

For most Access Control Applications
15 Year Standard Warranty

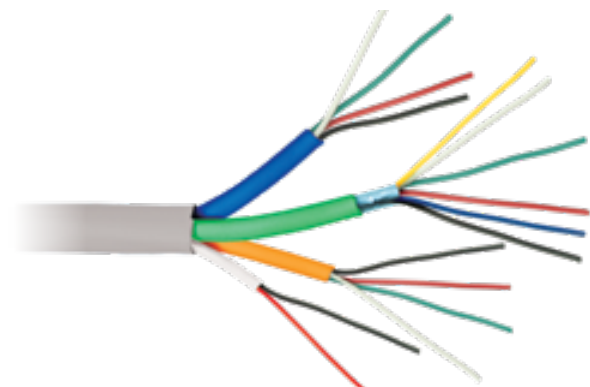
Compliance:

ETL or UL CM
RoHS Compliant

Applications:

Universal Systems Instrumentation,
Data and Control
Sound and Audio

Class 2/3 Low Voltage Power
Commercial/Residential/Institutional



Composite Cable For Most Access Control Applications

4C/18 AWG - Lock Power

2C/22 AWG - Door Contact

6C/22 AWG SHIELDED - Card Reader

4C/22 AWG - Request to Exit/Spare

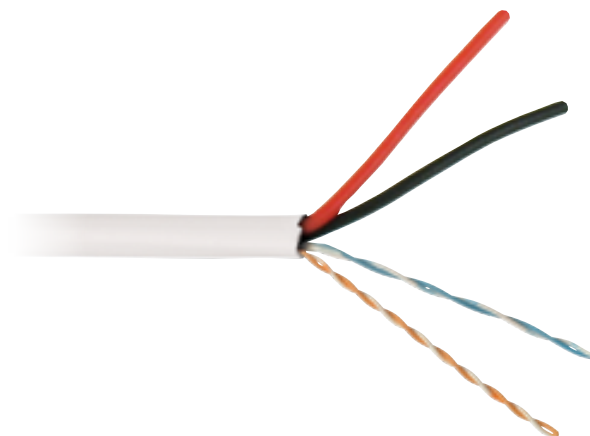
SCP Part No.: **ACC-1**

PVC, Jacket Color: Gray

Packaging: 500ft / 152m Spool

Package Wt: 58.5 lbs / 26.6 kgs

OD: 12.50±0.20mm



Specialized Home Control Applications

2C/16 AWG + Cat5e 2PR UTP, PVC Jkt

SCP Part No.: **ACC-2**

PVC, Jacket Color: White

Packaging: 1000ft/305m Spool

Package Wt: 65.5 lbs / 30 kgs

OD: 10.80±0.20mm

For the most current SCP product Information

Please visit our website at www.scpcat5e.com

Here you may find all of our technical specifications, product information, cross references, sales sheets, and product support materials.

The SCP website also offers listings of our current cables and accessories, technical resources, "How to" product instructions and even a section on where to buy SCP cables and accessories.



www.SCPcat5e.com



Toll Free 1-866-470-5742 | Direct: +1-954-327-5770 | Email: sales@scpcat5e.com | www.scpcat5e.com |



BULK CABLES | FIRE ALARM

FPLR - Fire Power Limited Riser | FPLP - Fire Power Limited Plenum

SCP Fire Alarm cables are used in smoke alarms and detectors, voice communications, addressable fire alarm systems, microprocessor controlled systems, pull boxes, burglar alarms, wiring of fire alarms, and fire protective circuits. The cables meet all NEC and UL guidelines. SCP maintains stock in both FLPR [riser rated, non-plenum] in shielded and unshielded versions. Also, FPLP [plenum rated] in shielded and unshielded configurations.

FPLR - FIRE POWER LIMITED RISER

These SCP Fire Alarm cables are FPLR (Fire Power Limited Riser) rated and are available in both shielded and unshielded versions. Available in wire sizes from 12 AWG to 22 AWG... SCP has the FPLR cables that you need. SCP FPLR cables are manufactured to NEC Article 760 and approved by California State Fire Marshall. These cables have solid bare copper conductors and sun resistant PVC jackets.

FPLP - FIRE POWER LIMITED PLENUM

These SCP Fire Alarm cables are FPLP (Fire Power Limited Plenum) rated and are available in both shielded and unshielded versions. Available in wire sizes from 12 AWG to 22 AWG... SCP has the FPLP cables that you need. SCP FPLP cables are manufactured to NEC Article 760 and approved by California State Fire Marshall. These cables are UL rated CMP.

Power limited fire alarm and communications cable for Riser and Plenum applications.

Fire Alarm

Fire Protective Circuits

Smoke Detectors

Monitor/Detection

Signal

Control Circuits

Initiating Circuits

Notification Circuits



FPLR - Fire Power Limited Riser - Unshielded

Features:

Solid Bare Copper
Twisted Pair Construction
Voltage Rating: 300V
Temperature: 75°C

Compliance:

UL Listed or ETL
NEC Type: FPLR
NEC Article 760
Flame Rating: UL 1666, FT4

RoHS Compliant

Applications:

Fire Power Limited Riser
Fire Protection, Alarm, Monitor/Detection, Audio Circuits,
Control Circuits, Notification & Initiating Circuits



FPLR NON-PLENUM UNSHIELDED

RISER RATED: FPLR, CL2R, C(UL) FT4

AVAILABLE: 22 AWG TO 12 AWG

2-6 SOLID BARE COPPER CONDUCTORS

Unshielded FPLR 300V 75°C

SCP Part #	AWG	Cond	Strand	Shield	Nominal OD Inch	Nominal OD MM	Jkt Type	Jacket Color	Length FT	Length M	Packaging	Weight lbs	Weight kgs
22/4FPLR	22	4	SOL	None	0.120	3.66	PVC	Red	1000	305	BOX	13.00	5.91
22/4FPLR-500	22	4	SOL	None	0.120	3.66	PVC	Red	500	152	BOX	6.50	2.95
22/4FPLR-COIL	22	4	SOL	None	0.120	3.66	PVC	Red	500	152	COIL PACK	5.50	2.50
22/4FPLR-380-COIL	22	4	SOL	None	0.120	3.66	PVC	Red	380	116	COIL PACK	4.50	2.05
18/2FPLR	18	2	SOL	None	0.151	3.84	PVC	Red	1000	305	SPOOL	16.00	7.27
18/2FPLR-BOX	18	2	SOL	None	0.151	3.84	PVC	Red	1000	305	BOX	15.50	7.05
18/2FPLR-500	18	2	SOL	None	0.151	3.84	PVC	Red	500	152	SPOOL	8.50	3.86
18/2FPLR-500-BOX	18	2	SOL	None	0.151	3.84	PVC	Red	500	152	BOX	8.50	3.86
18/4FPLR	18	4	SOL	None	0.176	4.47	PVC	Red	1000	305	SPOOL	29.50	13.41
18/4FPLR-BOX	18	4	SOL	None	0.176	4.47	PVC	Red	1000	305	BOX	29.50	13.41
18/4FPLR-500	18	4	SOL	None	0.176	4.47	PVC	Red	500	152	BOX	14.50	6.59
18/6FPLR-500	18	6	SOL	None	0.204	5.38	PVC	Red	500	152	BOX	23.00	10.45
16/2FPLR	16	2	SOL	None	0.172	4.42	PVC	Red	1000	305	SPOOL	25.00	11.36
16/2FPLR-BOX	16	2	SOL	None	0.172	4.42	PVC	Red	1000	305	BOX	23.00	10.45
16/2FPLR-XX	16	2	SOL	None	0.172	4.42	PVC	BI, GN	1000	305	SPOOL	25.00	11.36
16/2FPLR-500	16	2	SOL	None	0.172	4.42	PVC	Red	500	152	BOX	13.00	5.91
16/4FPLR	16	4	SOL	None	0.201	5.11	PVC	Red	1000	305	SPOOL	29.50	13.41
16/4FPLR-500	16	4	SOL	None	0.201	5.11	PVC	Red	500	152	BOX	15.00	6.82
14/2FPLR	14	2	SOL	None	0.198	5.41	PVC	Red	1000	305	SPOOL	35.00	15.91
14/2FPLR-XX	14	2	SOL	None	0.198	5.41	PVC	BL,OR,WT,YL	1000	305	SPOOL	35.00	15.91
14/2FPLR-500	14	2	SOL	None	0.198	5.41	PVC	Red	500	152	SPOOL	18.50	8.41
14/4FPLR	14	4	SOL	None	0.233	6.38	PVC	Red	1000	305	SPOOL	68.00	30.91
12/2FPLR	12	2	SOL	None	0.262	6.2	PVC	Red	1000	305	SPOOL	52.50	23.86

FPLR - Fire Power Limited Riser - Shielded



FPLR NON-PLENUM SHIELDED

RISER RATED: FPLR, CL2R, C(UL) FT4 or ETL

SHIELD: OVERALL AL FOIL W/DRAIN

AVAILABLE: 18 AWG TO 12 AWG

2-4 SOLID BARE COPPER CONDUCTORS

Shielded FPLR 300V 75°C

SCP Part #	AWG	Cond	Strand	Shield	Nominal OD Inch	Nominal OD MM	Jkt Type	Jacket Color	Length FT	Length M	Packaging	Weight lbs	Weight kgs
18/2FPLR-SH	18	2	SOL	OAS	0.153	3.94	PVC	Red	1000	305	BOX	18.50	8.41
18/2FPLR-SH-BOX	18	2	SOL	OAS	0.153	3.94	PVC	Red	1000	305	BOX	17.50	7.95
18/4FPLR-SH	18	4	SOL	OAS	0.178	4.57	PVC	Red	500	152	BOX	32.50	14.77
16/2FPLR-SH	16	2	SOL	OAS	0.174	4.52	PVC	Red	1000	305	SPOOL	27.00	12.27
16/2FPLR-SH-WT	16	2	SOL	OAS	0.174	4.52	PVC	WT	1000	305	SPOOL	27.00	12.27
16/4FPLR-SH	16	4	SOL	OAS	0.201	5.21	PVC	Red	1000	305	SPOOL	51.00	23.18
14/2FPLR-SH	14	2	SOL	OAS	0.200	5.51	PVC	Red	1000	305	SPOOL	35.00	15.91
14/4FPLR-SH	14	4	SOL	OAS	0.233	6.48	PVC	Red	1000	305	SPOOL	79.00	35.91
12/2FPLR-SH	12	2	SOL	OAS	0.251	6.38	PVC	Red	1000	305	SPOOL	64.00	29.09

FPLP - Fire Power Limited Plenum - Unshielded



FPLP PLENUM UNSHIELDED

PLENUM RATED: FPLP, CL2P, C(UL) FT6

AVAILABLE: 18 AWG TO 12 AWG

2-4 SOLID BARE COPPER CONDUCTORS

Unshielded FPLP 300V 75°C

XX = Jacket Color Code

SCP Part #	AWG	Cond	Strand	Shield	Nominal OD Inch	Nominal OD MM	Jkt Type	Jacket Color	Length FT	Length M	Packaging	Weight lbs	Weight kgs
18/2FPLP	18	2	SOL	None	0.143	3.84	PVC-P	Red	1000	305	SPOOL	17.00	7.73
18/2FPLP-XX	18	2	SOL	None	0.143	3.84	PVC-P	BL,GN,OR,WT,YL	1000	305	SPOOL	17.00	7.73
18/4FPLP	18	4	SOL	None	0.166	4.47	PVC-P	Red	1000	305	SPOOL	30.50	13.86
16/2FPLP	16	2	SOL	None	0.172	4.37	PVC-P	Red	1000	305	SPOOL	26.00	11.82
16/2FPLP-XX	16	2	SOL	None	0.172	4.37	PVC-P	BL,GN,OR,WT,YL	1000	305	SPOOL	26.00	11.82
16/4FPLP	16	4	SOL	None	0.201	5.11	PVC-P	Red	1000	305	SPOOL	29.50	13.41
14/2FPLP	14	2	SOL	None	0.206	5.21	PVC-P	Red	1000	305	SPOOL	37.50	17.05
14/2FPLP-XX	14	2	SOL	None	0.206	5.21	PVC-P	BL,GN,OR,WT,YL	1000	305	SPOOL	37.50	17.05
14/2FPLP-500	14	2	SOL	None	0.206	5.21	PVC-P	Red	500	152	BOX	19.00	8.64
14/4FPLP	14	4	SOL	None	0.247	6.27	PVC-P	Red	1000	305	SPOOL	67.00	30.45
12/2FPLP	12	2	SOL	None	0.238	6.07	PVC-P	Red	1000	305	SPOOL	54.50	24.77
12/2FPLP-STR	12	2	19	None	0.238	6.07	PVC-P	Red	1000	305	SPOOL	54.50	24.77

FPLP - Fire Power Limited Plenum - Shielded



FPLP PLENUM SHIELDED

PLENUM RATED: FPLP, CL2P, C(UL) FT6

SHIELD: OVERALL AL FOIL W/DRAIN

AVAILABLE: 18 AWG TO 14 AWG

2-4 SOLID BARE COPPER CONDUCTORS

Shielded FPLP 300V 75°C

XX = Jacket Color Code

SCP Part #	AWG	Cond	Strand	Shield	Nominal OD Inch	Nominal OD MM	Jkt Type	Jacket Color	Length FT	Length M	Packaging	Weight lbs	Weight kgs
18/2FPLP-SH	18	2	SOL	OAS	0.143	3.05	PVC-P	Red	1000	305	SPOOL	19.50	8.86
18/4FPLP-SH	18	4	SOL	OAS	0.166	4.01	PVC-P	Red	1000	305	SPOOL	33.50	15.23
16/2FPLP-SH	16	2	SOL	OAS	0.172	4.47	PVC-P	Red	1000	305	SPOOL	29.00	13.18
16/2FPLP-SH-XX	16	2	SOL	OAS	0.172	4.47	PVC-P	BL,GN,OR,WT,YL	1000	305	SPOOL	29.00	13.18
16/4FPLP-SH	16	4	SOL	OAS	0.201	5.21	PVC-P	Red	1000	305	SPOOL	51.50	23.41
14/2FPLP-SH	14	2	SOL	OAS	0.206	5.38	PVC-P	Red	1000	305	SPOOL	37.50	17.05

Want Your Order Shipped For Free?

We have a Free Freight Program for orders shipped within the continental USA and Canada.

Contact your SCP account manager for details

Sales@scpcat5e.com | Toll Free 1-866-470-5742 | Direct +1-954-327-5770



HDMI Cables | HDMI Extenders

SCP offers a full line of HDMI® Cables that are updated with the latest HDMI versions as they become available. SCP HDMI cables consistently outperform other brands with superior quality and attractive price points.

HDMI® Cables - Ultra Slim (SCP 940 Series)

SCP's Ultra Slim professional cables – HDMI High Speed with Ethernet cables are the best cables for connecting multi-port A/V devices and any application where low profile connectors are desired. The connectors are 50% smaller and lighter than typical HDMI Type A connectors. Not only are these cables lower profile, but they are lighter with only a 3.6mm cable diameter so that the connection will not come loose over time. These cables are compliant with the latest HDMI LLC standards including 4k Ready, Full 3D, Audio Return Channel and more. Our #940 professional series cables are available in lengths from 0.5m/1.6ft to 4.5m/15ft

HDMI® Cables - Ultra Thin/Flat (SCP 941 Series)

SCP's Ultra Thin professional cables – HDMI High Speed with Ethernet cables are the most flexible low profile cables on the market. These cables are recommended for connecting to ultra-thin displays and/or where the lowest profile A/V connections are desired. The connectors are 50% smaller and lighter than typical HDMI Type A connectors. Not only are these cables lower profile, but they are lighter and more flexible with only a 2.2mm cable thickness. These cables are compliant with the latest HDMI LLC standards including 4k Ready, Full 3D, Audio Return Channel and more. Our #941 professional series cables are available in lengths from 1m/3.3ft to 4.5m/15ft.

HDMI® Cables - In-Wall Rated (SCP 944E Series)

SCP Custom Installation Series Cables – HDMI High Speed with Ethernet cables are the professional installers' choice for connecting the latest A/V devices. These cables are UL listed and rated for In-Wall installations. These cables are compliant with the latest HDMI LLC standards including 4K Ready, Full 3D, Audio Return Channel and more. Our #944E performance series cables are available in lengths from 3ft/0.9m to 50ft/15.2m.



HDMI™
HIGH-DEFINITION MULTIMEDIA INTERFACE

The terms HDMI and HDMI High-Definition Multimedia Interface, and the HDMI Logo are trademarks or registered trademarks of HDMI Licensing LLC in the United States and other countries.

HDMI® Extenders

SCP HDMI Extenders allow you to extend HDMI® signals over longer distances than using typical HDMI cables. HDMI Extender systems consist of a "transmitter" and "receiver" and figuratively "extends" the HDMI signal over LAN cables from the source device to the Display.

SCP HDMI Extenders are available in several different configurations to accommodate most installations.

**4K
READY**



HDMI® CABLES - ULTRA SLIM - SCP # 940 SERIES

All 940 series cables are updated with the latest HDMI versions as they become available.

Features:

Low Profile Male to Male Type A Connectors
Triple Shielded & 24K Gold Plated,
Lightweight 3.6mm cable diameter
36 AWG TC conductors

Compliance:

HDMI High Speed with Ethernet
4K x 2K 60Hz 4:4:4 / 4K x 2K 60Hz 4:2:0
UL Listed VW-1
RoHS

Applications:

Connecting multi-port A/V devices
Supports up to 18 Gbps bandwidth
4K Ready, ARC, HEC
Backward Compatible

**ULTRA SLIM**

Ultra Slim HDMI Cable- High Speed w/Ethernet
Low Profile Type A Connector- 36 AWG 4MM Cable OD
SCP Part No.: **940-XX (XX = LENGTH)**
XX=Lengths USA : 1.6ft / 3ft / 6ft / 8ft / 15ft
XX=Lengths EU : 0.5m / 1m / 1.5m / 2.5m / 4.5m
PVC, Jacket Color: Black
Packaging: 1 EA/BLISTER or BAG
Package Wt: Varies

**HDMI® CABLES - ULTRA THIN/FLAT - SCP # 941 SERIES**

All 941 series cables are updated with the latest HDMI versions as they become available.

Features:

50% Smaller Connector Housing
Triple Shielded, 24k Gold Plated Type A Connector
Lightweight 2.2mm thick cable
36 AWG TC conductors

Compliance:

HDMI High Speed with Ethernet
4K x 2K 60Hz 4:4:4 / 4K x 2K 60Hz 4:2:0
UL Listed VW-1
RoHS

Applications:

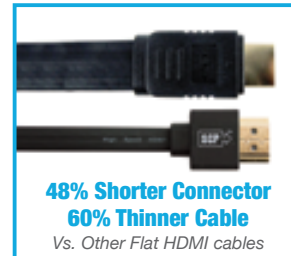
Connecting to ultra-thin displays
Supports up to 18 Gbps bandwidth
4K Ready, ARC, HEC
Backward Compatible

**Ultra-Thin/Flat Series**

The thinnest "ribbon style" professional cables on the market

ULTRA THIN/FLAT

Ultra Thin/Flat HDMI Cable - High Speed w/Ethernet
Low Profile - Flat 2.2x7MM Cable OD
SCP Part No.: **941-XX (XX = LENGTH)**
XX=Lengths USA : 3ft / 6ft / 8ft / 15ft
XX=Lengths EU : 1m / 1.5m / 2.5m / 4.5m
PVC, Jacket Color: Black
Packaging: 1 EA/BLISTER or BAG
Package Wt: Varies

**HDMI® CABLES - IN-WALL RATED - SCP # 944E SERIES**

All 944E series cables are updated with the latest HDMI versions as they become available.

Features:

4K Ready, ARC, HEC
Male to Male Type A ~ 24k gold plated
Lengths up to 50ft

Compliance:

HDMI High Speed with Ethernet
4K x 2K 60Hz 4:4:4 / 4K x 2K 60Hz 4:2:0
UL Listed CL3 FT4 / VW-1
RoHS

Applications:

Professional Home Theater
UL Rated for In-Wall installations
Supports up to 18 Gbps bandwidth
Backward Compatible

**HDMI CABLE- HIGH SPEED w/ ETHERNET, 4K**

HDMI Cable- High Speed w/Ethernet
4K, Deep Color, HEC, ARC, Full 3D Support
SCP Part No.: **944E-XX (XX = LENGTH)**
XX=Lengths USA : 3ft / 6ft / 8ft / 15ft / 25ft / 30ft / 35ft / 50ft
XX=Lengths EU : 1m / 1.5m / 2.5m / 4.5m / 7.6m / 9.1m / 10.7m / 15.2m
PVC or Nylon Mesh, Jacket Color: Black
Packaging: 1 EA/BAG or BOX
Package Wt: Varies

HDMI® Extenders CAT5E/CAT6 - HDBaseT Lite**Features:**

Transmitter and receiver
Extends signal over LAN cables or Coax

Compliance:

HDMI Deep Color & full 3D
HDCP compliant
4K2K@30 (HDBaseT-Lite)

Applications:

Permanent or Semi-Permanent Installations
Residential/Commercial/Institutional

**HDMI EXTENDER OVER SINGLE CAT6/5e**

HDBaseT Lite HDMI Extender over Single CAT6/CAT5e, with RS232 & IR
SCP Part No.: **962**
Color: Black
Packaging: 1 EA/BOX
Package Wt: 1.6LBS / 0.73kg

The terms HDMI and HDMI High-Definition Multimedia Interface, and the HDMI Logo are trademarks or registered trademarks of HDMI Licensing LLC in the United States and other countries.

CONNECTORS & ADAPTERS

**EZ-RJ45® System | RJ45 Plugs & Couplers | BNC Connectors |
F-Type Connectors | RCA Connectors | Adapters | B Connectors |
Speaker Banana Plugs**

Connectors and Adapters for your Networking, Audio/Video, and CCTV needs including:
RJ45 Connectors; Coax Connectors-BNC, F-Type, RCA; Speaker Banana Plugs, and more.

EZ-RJ45® System

SCP has a full line of EZ RJ45 connectors and tools. The patented EZ-RJ45® Connector simplifies twisted pair terminations by allowing the wires to be inserted through the connector and out the front.

RJ45 Plugs & Couplers

SCP has a full line of RJ45 connectors, jacks, and couplers for all of your installation needs.

Compression Connectors - RCA, BNC, F, RGB mini

SCP has a full line of compression connectors for all of your installation needs. All SCP compression connectors come with 6 different color bands for easy customization. No need to buy separate bands. Available in 50 Micron gold plated or nickel.

Crimp-on Connectors - BNC, F-Type

SCP offers a large selection of high quality crimp-on and twist-on connectors for 75 Ohm RG style cables. Our BNC crimp-on and twist-on connectors are very popular CCTV and other security applications. We only indicate a portion of our connector availability in this catalog. Contact us if the connector that you need is not shown.

Adapters

SCP is the Installers Choice for all connectors and adapters. SCP has a full line of RCA, BNC, and F-Type adapters... even for the most difficult installation.

B Connectors

SCP is a one-stop shop for all of your custom installation accessories. SCP has both non gel and gel filled B Connectors ("Beanies").

Speaker Banana Plugs

SCP Speaker Banana Plugs are known for their high quality at a value price. Our Banana Plugs are high quality 50 micron gold plated and are the perfect connector for even the most discriminating audiophile. Available in black or red.



EZ-RJ45® SYSTEM

Features:

Thru holes for faster terminations
Simple 1 Piece Design

Compliance:

FCC Compliant
UL Rated
RoHS Compliant

Applications:

Use in Category 3, 5/5E, and 6 Compliant Data Networks
Works with Solid or Stranded Wire



EZ-RJ45 for CAT5E

EZ-RJ45 Connectors for
HNCPRO & CAT5E UTP Cables
SCP Part No.: **EZ-45**
Packaging: 100 Ea/Jar
Package Wt: 0.46 lbs / 0.20 kgs



EZ-RJ45 for CAT5E Shielded

EZ-RJ45 Connectors for
HNCPRO & CAT5E UTP Cables
SCP Part No.: **EZ-45-SHIELD**
Packaging: 50 Ea/Jar
Package Wt: 0.30 lbs / 0.13 kgs



EZ-RJ45 for CAT6

EZ-RJ45 Connectors for
HNCPROPLUS & CAT6 UTP Cables
SCP Part No.: **EZ-45-CAT6**
Packaging: 100 Ea/Jar
Package Wt: 0.46 lbs / 0.20 kgs



EZ Strain Reliefs - CAT5E

EZ-RJ45
Strain Reliefs/Boots for CAT5E
SCP Part No.: **EZ-CAT5-SR**
Packaging: 100 Ea/Bag
Package Wt: 0.2 lbs / 0.9 kgs



EZ Strain Reliefs - CAT6

EZ-RJ45
Strain Reliefs/Boots for CAT6
SCP Part No.: **EZ-CAT6-SR**
Packaging: 100 Ea/Bag
Package Wt: 0.2 lbs / 0.9 kgs

EZ TOOL PRO

EZ-RJ45 Professional
Heavy Duty Termination Tool
SCP Part No.: **EZ-TOOL-PRO**
Packaging: 1 Ea/Box
Package Wt: 1.2 lbs / 0.55 kg
See Pg.57



APPLICATION

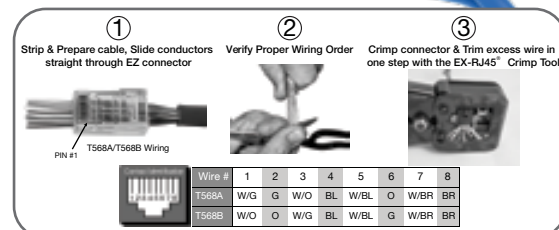
- EZ-45 CAT5 Connectors
- EZ-45 CAT6 Connectors
- EZ-45 Shielded Connectors
- SCP's 105/105A/106 Modular Plugs
- Compatible with all RJ45, RJ12, and RJ11 Modular Plug Connectors
- Zero Flex Frame prevents torque loss during the crimping cycle
- Tool Steel Die Head assembly provides 360 degrees of connector support during crimp
- Clean, Ultra Flush Trim on the EZ-RJ45® Extended Connectors
- Expanded Surface area on the Contact Drivers
- Delivers full, uniform Crimp Force
- Built in Wire Cutter and Strippers

APPLICATION

- Use in Category 3, 5, 5E, and 6 compliant data networks and patch cords

TECHNICAL DATA

- Compatible with most existing crimp tools except AMP
- 50 Micro inch Gold Plate
- Made in the U.S.A.
- FCC Compliant
- UL Rated
- Patented



RJ45 Plugs & Couplers

**RJ45 CAT5E Plugs**

CAT5E UTP RJ45 Modular Plug

SCP Part No.: **105**

Packaging: 100 Ea/Bag

Package Wt: 0.4 lbs / 0.2 kgs

**RJ45 CAT5E Shielded Plug**

CAT5E Shielded RJ45 Modular Plug

SCP Part No.: **105A**

Packaging: 100 Ea/Bag

Package Wt: 0.62 lbs / 0.28 kgs

**RJ45 CAT6 Plugs**

CAT6 UTP RJ45 Modular Plug

SCP Part No.: **106**

Packaging: 100 Ea/Bag

Package Wt: 0.4 lbs / 0.2 kgs

**RJ45 CAT6/6A Shielded Plugs**

CAT6/6A Shielded RJ45 8P8C

Modular Plug w/Load bar

SCP Part No.: **106A**

Packaging: 100 Ea/Bag

Package Wt: 0.62 lbs / 0.28 kgs

**CAT5E Couplers**SCP Part No.: **104A-XX**

CAT5E Coupler Panel Mount

Available Colors: Black, White

Packaging: 50 Ea/Bag

Package Wt: 0.01lbs / 0.004 kgs

**CAT5E 1 Port Surface Mount**

CAT5E Single Port Surface Mount

Box Unloaded

SCP Part No.: **212-WT**

Packaging: 100 Ea/Jar

Package Wt: 0.06 lbs / 0.03 kgs

**CAT5E 2 Port Surface Mount**

CAT5E Dual Port Surface Mount

Box Unloaded

SCP Part No.: **213-WT**

Packaging: 100 Ea/Jar

Package Wt: 0.07 lbs / 0.03 kgs

**CAT5E 4 Port Surface Mount**

4 Port Surface Mount Box Telephone

Wall Plate

SCP Part No.: **214-WT**

Packaging: 100 Ea/Jar

Package Wt: 0.11 lbs / 0.05 kgs

**RJ45 CAT6/6A Shielded Plugs**

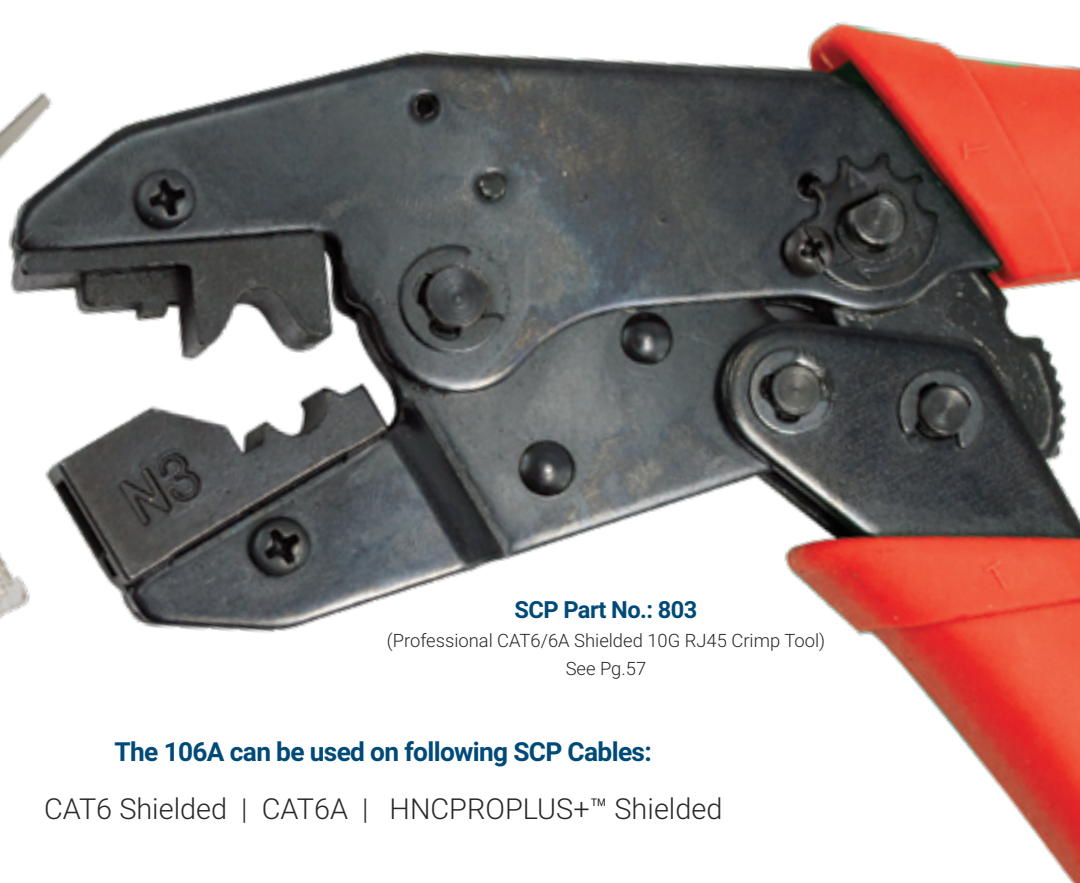
CAT6/6A Shielded RJ45 8P8C

Modular Plug w/Load bar

SCP Part No.: **106A**

Packaging: 100 Ea/Bag

Package Wt: 0.62 lbs / 0.28 kgs

**SCP Part No.: 803**

(Professional CAT6/6A Shielded 10G RJ45 Crimp Tool)

See Pg.57

The 106A can be used on following SCP Cables:

CAT6 Shielded | CAT6A | HNCPROPLUS+™ Shielded

RCA Compression Connectors



SCP Part No.: 920-59
PRO Series - RCA Compression
Connector for RG59/U
Gold Plated with 6 color bands
Packaging: 10 Ea/Bag
Package Wt: 0.28 lbs / 0.13kgs



SCP Part No.: 921-6
PRO Series - RCA Compression
Connector for RG6/U
Gold Plated with 6 color bands
Packaging: 10 Ea/Bag
Package Wt: 0.28 lbs / 0.13kgs



SCP Part No.: 922-6Q
PRO SERIES - RCA Compression
Connector for RG6/U Quad Shield
Gold Plated with 6 color bands
Packaging: 10 Ea/Bag
Package Wt: 0.28 lbs / 0.13kgs



SCP Part No.: 926
PRO SERIES - RCA Compression
Connector for mini RGB
Gold Plated with 6 color bands
Packaging: 10 Ea/Bag
Package Wt: 0.28 lbs / 0.13kgs



SCP Part No.: 920-59N
RCA Compression Connector
for RG59/U Nickel Plated
with 6 color bands
Packaging: 10 Ea/Bag
Package Wt: 0.28 lbs / 0.13kgs



SCP Part No.: 921-6N
RCA Compression Connector
for RG6/U Nickel Plated
with 6 color bands
Packaging: 10 Ea/Bag
Package Wt: 0.28 lbs / 0.13kgs



SCP Part No.: 922-6QN
RCA Compression Connector
for RG6/U Quad Shield
Nickel Plated with 6 color bands
Packaging: 10 Ea/Bag
Package Wt: 0.28 lbs / 0.13kgs



SCP Part No.: 926-N
RCA Compression Connector
for mini RGB Nickel Plated
with 6 color bands
Packaging: 10 Ea/Bag
Package Wt: 0.28 lbs / 0.13kgs

BNC Compression Connectors



SCP Part No.: 923-59
PRO Series - BNC Compression
Connector for RG59/U,
Gold Plated with 6 color bands
Packaging: 10 Ea/Bag
Package Wt: 0.36 lbs / 0.16 kgs



SCP Part No.: 924-6
PRO Series - BNC Compression
Connector for RG6/U,
Gold Plated with 6 color bands
Packaging: 10 Ea/Bag
Package Wt: 0.36 lbs / 0.16 kgs



SCP Part No.: 925-6Q
PRO Series - BNC Compression
Connector for RG6/U Quad Shield,
Gold Plated with 6 color bands
Packaging: 10 Ea/Bag
Package Wt: 0.36 lbs / 0.16 kgs



SCP Part No.: 927
PRO Series - BNC Compression
Connector for mini RGB
Gold Plated with 6 color bands
Packaging: 10 Ea/Bag
Package Wt: 0.36 lbs / 0.16 kgs



SCP Part No.: 923-59-N
BNC Compression Connector
for RG59/U, Nickel Plated
with 6 color bands
Packaging: 10 Ea/Bag
Package Wt: 0.36 lbs / 0.16 kgs



SCP Part No.: 924-6-N
BNC Compression Connector
for RG6/U, Nickel Plated
with 6 color bands
Packaging: 10 Ea/Bag
Package Wt: 0.36 lbs / 0.16 kgs



SCP Part No.: 925-6Q-N
BNC Compression Connector
for RG6/U Quad Shield,
Nickel Plated with 6 color bands
Packaging: 10 Ea/Bag
Package Wt: 0.36 lbs / 0.16 kgs



SCP Part No.: 927-N
BNC Compression Connector
for mini RGB, Nickel Plated
with 6 color bands
Packaging: 10 Ea/Bag
Package Wt: 0.36 lbs / 0.16 kgs



F-TYPE Compression Connectors**SCP Part No.: 908**

F Compression
Connector for RG6/U Quad
Packaging: 100 Ea/Bag
Package Wt: 1.65 lbs / 0.75 kgs

**SCP Part No.: 909**

F Compression
Connector for RG6/U
Packaging: 100 Ea/Bag
Package Wt: 2 lbs / 9.1 kgs

**SCP Part No.: 950**

F Compression
Connector for RG59/U
Packaging: 100 Ea/Bag
Package Wt: 2 lbs / 9.1 kgs

**SCP Part No.: 955**

F Compression
Connector for RG6/U Plenum
Packaging: 100 Ea/Bag
Package Wt: 2 lbs / 9.1 kgs

Crimp-On Connectors - BNC**SCP Part No.: 904**

BNC Male 2 Piece Crimp
Connector for RG59/U
Packaging: 10 Ea/Bag 100
Package Wt: 2.2 lbs / 1.05 kgs

**SCP Part No.: 904A**

BNC Male 2 Piece Crimp
Connector for RG6/U
Packaging: 10 Ea/Bag 100
Package Wt: 2.2 lbs / 1.05 kgs

**SCP Part No.: 904B**

BNC Male 2 Piece Crimp
Connector for RG6/U PLENUM
Packaging: 10 Ea/Bag 100
Package Wt: 2.3 lbs / 1.1 kgs

**SCP Part No.: 905**

2 Piece Female BNC Crimp
Connector for RG59/U
Packaging: 10 Ea/Bag 100
Package Wt: 2.3 lbs / 1.1 kgs

Twist-On Connectors - BNC**SCP Part No.: 906**

3 Piece BNC Male Crimp
Connector for RG59/U
Packaging: 10 Ea/Bag 100
Package Wt: 2.3 lbs / 1.1 kgs

**SCP Part No.: 908A**

BNC Male Connector for
RG59/U
Packaging: 10 Ea/Bag 100
Package Wt: 1.1 lbs / 0.5 kgs

**SCP Part No.: 907**

BNC Twist on for RG59/U
Packaging: 10 Ea/Bag 100
Package Wt: 2.94 lbs / 1.34 kgs

**SCP Part No.: 907A**

BNC Twist on for RG6/U
Packaging: 50 Ea/Bag
Package Wt: 1.38 lbs / 0.63 kgs

**SCP Part No.: 907B**

BNC Female Twist on for RG6/U
Packaging: 50 Ea/Bag
Package Wt: 1.4 lbs / 0.64 kgs

Crimp-On Connectors - F-TYPE**SCP Part No.: 901**

F Type Crimp-On W/Attached 1/2" Ring
RG6/U 75 Ohm COAX
Packaging: 100 Ea / Bag
Package Wt: 1.3 lbs / 0.57 kgs

**SCP Part No.: 902**

F Type Crimp-On W/Attached 1/2" RING
RG6 Quad Shield 75 Ohm COAX
Packaging: 100 Ea / Bag
Package Wt: 1.3 lbs / 0.57 kgs

Adapters - BNC, F Type, RCA

**SCP Part No.: 911**

BNC Female to RCA Male

Packaging: 10 Ea/Bag 100

Package Wt: 1.55 lbs / 0.703 kgs

**SCP Part No.: 914**

F Female to RCA Male

Packaging: 10 Ea/Bag 100

Package Wt: 1.55 lbs / 0.703kgs

**SCP Part No.: 914B**

F Female to

BNC Male Connector

Packaging: 10 Ea/Bag 100

Package Wt: 1.55 lbs / 0.703kgs

**SCP Part No.: 915**

RCA Female to F Male

Packaging: 10 Ea/Bag 100

Package Wt: 2.1 lbs / 0.952 kgs

**SCP Part No.: 916**

RCA Female to

BNC Male Adapter

Packaging: 10 Ea/Bag 100

Package Wt: 1.17 lbs / 0.530 kgs

**SCP Part No.: 917**

F Female to

F Female Adapter

Packaging: 10 Ea/Bag 100

Package Wt: 0.78 lbs / 0.353 kgs

**SCP Part No.: 917B**

BNC Female to

Female Connector

Packaging: 10 Ea/Bag 100

Package Wt: 1.55 lbs / 0.703 kgs

**SCP Part No.: 918**

RCA Female to RCA

Female Adapter

Packaging: 10 Ea/Bag 100

Package Wt: 1.3 lbs / 0.58 kgs

**SCP Part No.: 929**

BNC Right Angle

(Male-Female)

Packaging: 10 Ea/Bag 50

Package Wt: 2 lbs / 0.91 kgs

**SCP Part No.: 930**

BNC T Adapter-

Female to (2) Female

Packaging: 10 Ea/Bag 50

Package Wt: 2.4 lbs / 1.1 kgs

**SCP Part No.: 956**

2 Piece BNC Male for RG59/U Plenum

Packaging: 10 Ea/Bag

Package Wt: 0.2 lbs / 0.1 kgs

**SCP Part No.: 957**

Female BNC Twist on RG59/U

Packaging: 10 Ea/Bag

Package Wt: 0.25 lbs / 0.11 kgs

**SCP Part No.: 958**

BNC Multi-fit Crimp Kit 3 Rings

Packaging: 10 Ea/Bag

Package Wt: 0.25 lbs / 0.11 kgs

**SCP Part No.: 999**

T BNC Adapter 1 Male 2 Female

Packaging: 10 Ea/Bag 100

Package Wt: 1.71 lbs / 0.776 kgs

B Connectors

**SCP Part No.: B-CONN**

B Connector Dry Type

Color : White

Packaging: 1000 Ea/Bag

Package Wt: 2.33lbs / 1.05 kgs

**SCP Part No.: B-CONN-G**

B Connector Gel Filled/Silicon

Color : Blue

Packaging: 1000 Ea/Bag

Package Wt: 2.4lbs / 1.08 kgs

Speaker Banana Plugs

**SCP Part No.: 928-BK**

Banana Plug - PRO Series - Full Gold

Plated - Hand Screw Compression

Packaging: 10 Ea/Bag

Package Wt: 0.41lbs / 0.185kgs

**SCP Part No.: 928-RD**

Banana Plug - PRO Series - Full Gold

Plated - Hand Screw Compression

Packaging: 10 Ea/Bag

Package Wt: 0.41lbs / 0.185kgs

NETWORKING

Keystone Jacks | Patch Cords Ethernet | Patch Panels & Brackets

SCP offers a full line of Networking products for data and telecommunication applications. Our Networking product line is designed to support the latest industry standards while providing reliable networking performance. SCP Networking products include: CAT6/6A and CAT5E Patch Cables; Patch Panels & Brackets; Patch Panel Modules; and Keystone Jacks. SCP Networking products provide the most exceptional combination of quality and value in the industry.

Keystone Jacks

SCP has a full line of 110 type 90° keystone jacks for Cat6a, Cat6, Cat5e, and Cat3. Our jacks include color coded wiring labels for fast and accurate terminations. SCP Keystone Jacks can be used in patch panels, wall plate inserts, and also fit all Leviton components. Our Keystone Jacks are available in 10 different colors for easy color-coded installations. Our Keystone Jacks are UL and fully compliant with NEC® Article 800, TIA-568 and ISO/IEC 11801 requirements.

Patch Cords Ethernet

SCP Pro Series High Speed Patch Cables are professionally designed to handle bandwidth intensive applications. Constructed with the highest quality materials, these patch cables provide superior networking performance. Available in CAT6A, CAT6, & CAT5E.

Patch Panels & Brackets

SCP Patch Panels are UL and exceed TIA/EIA 568.C.2 standards for CAT5E and Cat6. SCP Patch Panels are 110 Type and available in 12, 24, and 48 port configurations.



Keystone Jacks



CAT6a Keystone Jack

CAT6A Shielded 10GBaseT RJ45
Keystone Jack- 8P8C- Full Shield
SCP Part No.: **CAT6A-SH-JACK-XX**
Available Colors: Blue, White
Packaging: 1 Ea/Bag
Package Wt: 1.19 lbs / 0.53 kgs



CAT6 Keystone Jack

CAT6 90 Degree Keystone Jack
SCP Part No.: **CAT6-JACK-XX**
Available Colors: Black, Blue, Brown,
Green, Ivory, Light Almond, Orange White,
Yellow
Packaging: 1 Ea/Bag OF 50
Package Wt: 1.19 lbs / 0.53 kgs



CAT5e Keystone Jack

CAT5E 90 Degree Keystone Jack
SCP Part No.: **101-XX**
Available Colors: , Black, Blue, Brown,
Green, Ivory, Light Almond, Orange,
Red, White, Yellow
Packaging: 1 Ea/Bag OF 50
Package Wt: 0.95 lbs / 0.43kgs



CAT3 Keystone Jack

CAT3 Voice Keystone Jack
SCP Part No.: **103-XX**
Available Colors: Black, Ivory,
Light Almond, Orange, White
Packaging: 1 Ea/Bag OF 50
Package Wt: 0.95 lbs / 0.43 kgs

Patch Cords Ethernet - X = LENGTH, XX = COLOR



CAT6A Patch Cords

Cat6A S/FTP 4PR 26 AWG Stranded BC
(7/0.48mm), w/Drain, male-to-male
RJ45 snag-less and molded boots.
SCP Part No.: **C6APC-X-XX**
PVC/LSZH Jacket Colors = various
XX= Lengths USA: 1ft >
XX= Lengths EU: 0.5m >
Packaging: : Varies from 1ea to 10ea/per poly bag
Package Wt: Varies



CAT6 UTP Patch Cords

Cat6 UTP Patch Cable- 4PR 23 AWG
Stranded, UTP, Snag-less and Molded Boot,
SCP Part No.: **C6PC-X-XX**
PVC/LSZH Jacket Colors = various
XX= Lengths USA: 1ft >
XX= Lengths EU: 0.5m >
Packaging: : Varies from 1ea to 10ea/per poly bag
Package Wt: Varies



CAT6 Shielded Patch Cables

CAT6 Shielded Patch Cable F/UTP 4PR
26 AWG Stranded BC (7/0.16mm), w/Drain
male-to-male RJ45 Snag-less and Molded Boots
SCP Part No.: **C6PCSH-X-XX**
PVC/LSZH Jacket Colors = various
XX= Lengths USA: 1ft >
XX= Lengths EU: 0.5m >
Packaging: : Varies from 1ea to 10ea/per poly bag
Package Wt: Varies



CAT5E UTP Patch Cords

CAT5E Patch Cable - Enhanced 350 MHz
CAT5E 4PR Stranded (7x0.20MM) UTP, PVC Jkt
SCP Part No.: **C5PC-X-XX**
PVC/LSZH Jacket Colors = various
XX= Lengths USA: 1ft >
XX= Lengths EU: 0.5m >
Packaging: : Varies from 1ea to 10ea/per poly bag
Package Wt: Varies



SCP Pro Series High Speed Patch Cables are professionally designed to handle bandwidth intensive applications. Constructed with the highest quality materials, these patch cables provide superior networking performance.

CAT5E & CAT6 Patch Panels



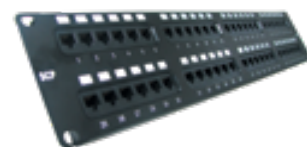
SCP Part No.: 312 (CAT5E)
SCP Part No.: 312-6 (CAT6)

12 Port Patch Panel W/ Bracket
 Packaging: 1Ea/Box
 Package Wt: 0.85 lbs / 0.39 kgs



SCP Part No.: 324 (CAT5E)
SCP Part No.: 324-6 (CAT6)
SCP Part No.: 324-6A (CAT6A)

24 Port Loaded Patch Panel
 Packaging: 1Ea/Box
 Package Wt: 1.58 lbs / 0.72 kgs



SCP Part No.: 348 (CAT5E)
SCP Part No.: 348-6 (CAT6)

48 Port Patch Panel 3.5" H x 19" W
 Packaging: 1Ea/Box
 Package Wt: 3.01 lbs / 1.37 kgs

19 Inch Hinged Wall Brackets



SCP Part No.: 524

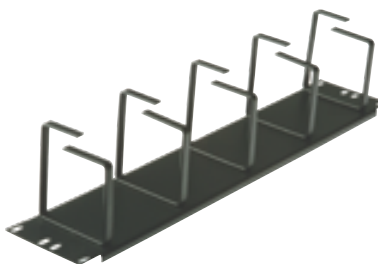
19 Inch Hinged Wall Bracket
 1.75" H x 5.5" D - for 324
 Packaging: 1Ea/Box
 Package Wt: 2.1 lbs / 0.90 kgs



SCP Part No.: 548

19 Inch Hinged Wall Bracket
 3.5" H x 5.5" D - for 348
 Packaging: 1Ea/Box
 Package Wt: 3.0 lbs / 1.36 kgs

19 Inch Cable Organizer Panels



SCP Part No.: 501

19 Inch Cable Organizer
 1.75" H - 5 RINGS
 Packaging: 1Ea/Box
 Package Wt: 2.1 lbs / 0.90 kgs



SCP Part No.: 502

19 Inch Cable Organizer
 3.5" H - 5 RINGS
 Packaging: 1Ea/Box
 Package Wt: 3.0 lbs / 1.36 kgs



SCP Part No.: 503

19 Inch Cable Organizer
 3.5" H x 3 RINGS, 24 NYLON CLIPS
 Packaging: 1Ea/Box
 Package Wt: 5.10 lbs / 2.31 kgs

INSTALLATION PRODUCTS

Pre-Wire Install Kits | Cable Ties & Clips | CATV Splitters & Amplifiers | Security CCTV Accessories | Structured Wiring Modules | Structured Wiring Panels | Low Voltage Mounting Brackets | Tools

SCP offers a full line of installation accessories for the custom installation integrator. Installation products include: Pre-Wire Install Kits or EZ-Caps™, Cable Ties and Clips, CATV Splitters, Distribution Modules, Low Voltage Mounting Brackets, and our industry leading Structured Wiring Panels.

Pre-Wire Install Kits

The purpose of the EZ-Cap™ Pre-Wire Installation Kit is to allow easy access to the wiring for customers who wish to install speaker components sometime in the future while remaining inconspicuous when not in use. It can also be used in other pre-wire applications such as security systems, garage door motor control wire, or any device that requires low voltage wire to penetrate the drywall.

Cable Ties & Clips

SCP has a full line of Cable Ties and Cable Clips. Our Cable Ties are UL and are UV resistant nylon.

CATV Splitters & Amplifiers

1 GHz Passive TV/CATV Splitter Modules provide highest possible RFI shielding. Available in video outputs of 2, 3, 4, and 8.

Security CCTV Accessories

SCP's miniature video balun is extremely compact allowing it to fit anywhere that a BNC can fit.



Structured Wiring Modules

CAT5E/6 Patch Panel Modules; Video Amplifiers, Combiners & Splitters; Telephone Distribution; and Universal Mounting Brackets for all modules.

Structured Wiring Panels

SCP Structured Wiring Panels are industry known for quality and value. Our structured wiring panels or Structured Enclosures are designed for both residential and commercial installations. Available in both cavity or surface mount configurations.

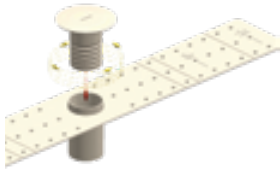
Low Voltage Mounting Brackets

SCP Low Voltage Mounting Brackets are available for both new construction or retrofit installations. Low Voltage Mounting Brackets are the time and money-saving solution for faster and easier mounting of Class 2 communications, computer and cable TV wiring.

Tools

SCP has all the tools that you need for your custom installation project. Installation tools include: crimp tools, punch down tools, RJ45 termination tools, compression tools, cable strippers, and more.



Pre-Wire Install Kit**SCP Part No.: EZ-CAP**

EZ-CAP Pre Wire Installation Kit

Packaging: 1 Ea/20 to Box

Package Wt: 09.2 lbs / 4.2 kgs

See Pg. 14 for more information

Cable Ties & Clips**SCP Part No.: CT-X-XX**

Cable Ties

Available Colors: Black, White

Available Lengths (Inch): 8, 11, 15

Packaging: 100 Ea/Bag

Package Wt: 0.27 lbs / 0.821 kgs (Varies on length)

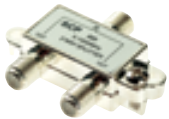
**SCP Part No.: 900-XX**

Cable Clips

Available Colors: Black, White

Packaging: 100 Ea/Bag

Package Wt: 0.31 lbs / 0.14 kgs

CATV Splitters & Amplifiers**SCP Part No.: 222**

2 Way Splitter 1 GHz

SCP Part No.: 222-3GHz

2 Way Splitter 3 GHz

Packaging: 1 Ea/Bag

Package Wt: 0.13 lbs / 0.06 kg

**SCP Part No.: 223**

3 Way Splitter 1 GHz

SCP Part No.: 223-3GHz

3 Way Splitter 3 GHz

Packaging: 1 Ea/Bag

Package Wt: 0.27 lbs / 0.821 kgs

**SCP Part No.: 244**

4 Way Splitter 1 GHz

SCP Part No.: 244-3GHz

4 Way Splitter 3 GHz

Packaging: 1 Ea/Bag

Package Wt: 0.27 lbs / 0.821 kgs

**SCP Part No.: 288**

8 Way Splitter 1 GHz

SCP Part No.: 223-3GHz

8 Way Splitter 3 GHz

Packaging: 1 Ea/Bag

Package Wt: 0.36 lbs / 0.16 kg

**SCP Part No.: HDCA-1**

SCPA-1, BI-Directional

Video Amplifier, 1 GHz

Packaging: 1 Ea/Bag

Package Wt: 1.1 lbs / 0.5 kg

Security CCTV Accessories**Mini Video Balun:**

VB-1 Miniature Video Balun for sending signals over unshielded twisted pair. The extremely compact size allows the VB-1 to fit anywhere that a BNC can fit. It is ideal for mounting directly on virtually all high-density DVR's without any additional cabling. It is designed with easy to use "self grabbing" clips to connect to a UTP cable.

SCP Part No.: VB-1

CCTV Miniature Video Balun

Packaging: 1 Ea/Box

Package Wt: 0.07 lbs / 0.03 kg

**Low Voltage Mounting Brackets****SCP Part No.: MBLV-N1**

1 Gang Nail-On Low Voltage Mounting Bracket

Packaging: 25 Ea/Per Box

Package Wt: 0.074 lbs / 0.03 kg

**SCP Part No.: MBLV-N2**

2 Gang Nail-On Low Voltage Mounting Bracket

Packaging: 25 Ea/Per Box

Package Wt: 0.056 lbs / 0.03 kg

**SCP Part No.: MBLV-H1**

1" Low Voltage Mounting Bracket for New Construction

Packaging: 50 Ea/Per Box

Package Wt: 0.056 lbs / 0.03 kg

**SCP Part No.: MBLV-H1K**

1" and 3/4" Low Voltage Mounting Bracket for New Construction

Packaging: 50 Ea/Per Box

Package Wt: 0.074 lbs / 0.03 kg

**SCP Part No.: MBLV-1**

Single Gang Low Voltage Mounting Bracket, Class 2, Existing Construction

Packaging: 100 Ea/Per Box

Package Wt: 0.75 lbs / 0.34 kgs

**SCP Part No.: MBLV-2**

2 Gang Low Voltage Mounting Bracket, Class 2, Existing Construction

Packaging: 50 Ea/Per Box

Package Wt: 0.75 lbs / 0.34 kgs

**SCP Part No.: MBLV-3**

3 Gang Low Voltage Mounting Bracket, Class 2, Existing Construction

Packaging: 50 Ea/Per Box

Package Wt: 1 lbs / 0.45 kgs

**SCP Part No.: MBLV-4**

4 Gang Low Voltage Mounting Bracket, Class 2, Existing Construction

Packaging: 50 Ea/Per Box

Package Wt: 1 lbs / 0.45 kg



1 **SCP Part No.: HCC-28** **Structured Wiring Panel with Hinge and Lock**

SCP Structured Wiring Panels are industry known for quality and value. Our Structured Wiring Panels or Structured Enclosures are designed for both residential and commercial installations. Available in both cavity or surface mount configurations. Includes a knockout for a single gang J-box on the bottom for electric. Markings on the enclosure allow for mounting with varying thickness of sheetrock. Hinged cover overlaps the enclosure frame to hide uneven drywall edges. A cardboard insert is included to protect from elements during construction phase. Standard pattern 1 in. x 6 in. accepts most brands of modules.

2 **SCP Part No.: SM-8** **8 Way Video Module**

The Video Splitter Module is used to Route the CATV or antenna signal to multiple locations. The Video signal outputs can be distributed up to 8 TV's. The SM-8 has a die-cast housing and printed circuit board. Use with a Video Amplifier for increased strength.

3 **SCP Part No.: TM-8-IDC** **8 Way Telecom Module IDC Type**

TM-8-IDC is designed for Telecom distribution systems. The TM-8-IDC supports analog telephone as well as supports digital service such as DSL or ISDN. Used for adding up to 4 phone lines to 8 locations in your home. Supports 8 telephone outlets for phone, fax, and other devices. Expansion port allows connectivity for additional phone locations. Includes RJ31 security port. Color coded 110 style punch-down connections. Phone lines are wired according to TIA/EIA-568 requirements. 1 input x 8 output expandable.

4 **SCP Part No.: UMB-3 / UMB-4** **Universal Mounting Bracket**

SCP provides 2 sizes of mounting brackets. UMB-3 or UMB-4 can be used to mount switchers, routers and modems. The UMB style allows the bracket to be adjusted or relocated easily with its push pin design. UMB-3 (5 3/4" x 4" Height) | UMB-4 (5 3/4" x 7" Height)

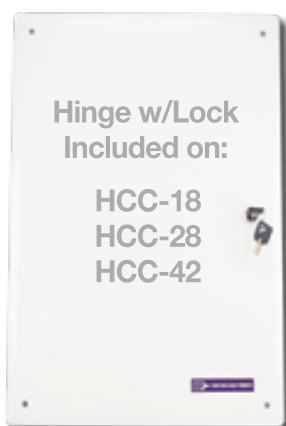
6 **SCP Part No.: TM-8** **8 Port RJ45 Telecom Module**

The TM-8 is designed for Telecom Distribution System. Supports up to 4 analog telephone lines. The TM-8 Also supports digital service such as DSL and ISDN. 1 input x 8 RJ45 output. Includes expandable port. Used for adding up to 4 phone lines to 8 locations in your home. Supports 8 telephone outlets for phone, fax, and other devices. Expansion port allows connectivity for additional phone locations. Includes RJ31 security port. All lines are wired according to TIA/EIA-568 requirements.

5 **SCP Part No.: PP-8** **8 Port Patch Panel**

The PP-8 patch panel is designed for data application. Provides up to 8 port network interface. Supports TIA T568A wiring standards. Exceeds CAT5E standards. All you need is RJ45 for the patch cord & 8 Pin 110/K IDC for cat5e cable. Also Available for CAT6; SCP part #: PP-8-CAT6

Structured Wiring Panels



Cavity Mount or Surface Mount • Steel and Painted White

These Enclosures are designed for both residential and commercial applications. Available in different sizes to accommodate multiple modules. The modular designed technique is made easy to install and allow flexibility to our customers. Includes a knockout for a single gang J-box on bottom for electric. Markings on the enclosure allow for mounting with varying thickness of sheetrock. Hinged cover overlaps the enclosure frame to hide uneven drywall edges. A cardboard insert is included to protect from elements during construction phase. Standard pattern 1 in. x 6 in. accepts most brands of modules.



SCP Part No.: HCC-14

14" Panel with Cover

Packaging: 1 Ea/Box

Package Wt: 11.00 lbs/4.98 kgs

Dimensions: 14" H x 14.25" W x 4" D

SCP Part No.: HCC-18

18" Panel W/ Hinge & Lock

Packaging: 1 Ea/Box

Package Wt: 13.00 lbs / 6 kgs

Dimensions: 18" H x 14.25" W x 4" D

SCP Part No.: HCC-28

28" Panel W/ Hinge & Lock

Packaging: 1 Ea/Box

Package Wt: 19.00 lbs / 8.61 kgs

Dimensions: 28" H x 14.25" W x 4" D

SCP Part No.: HCC-42

42" Panel W/ Hinge & Lock

Packaging: 1 Ea/Box

Package Wt: 26.0 lbs / 11.79 kgs

Dimensions: 42" H x 14.25" W x 4" D

Structured Wiring Modules



SCP Part No.: PP-8

8 Port Patch Panel Module

Packaging: 1 Ea/Box

Package Wt: 1.40 lbs / 0.63 kgs



SCP Part No.: PP-8-CAT6

8 Port CAT6 Patch Panel Module

Packaging: 1 Ea/Box

Package Wt: 1.40 lbs / 0.63 kgs



SCP Part No.: TM-8

8 Port RJ45 Telecom Module

Packaging: 1 Ea/Box

Package Wt: 0.52 lbs / 0.23 kgs



SCP Part No.: TM-8-IDC

8 Way Telecom Module IDC Type

Packaging: 1 Ea/Box

Package Wt: 0.6 lbs / 0.3 kgs



SCP Part No.: SM-8

8 Way Video Module

Packaging: 1 Ea/Box

Package Wt: 1.2 lbs / .5 kgs



SCP Part No.: UMB-3

Universal Mounting Bracket 4"

Packaging: 1 Ea/Box

Package Wt: 0.044 lbs / 0.02 kg



SCP Part No.: UMB-4

Universal Mounting Bracket 7"

Packaging: 1 Ea/Box

Package Wt: 0.064 lbs / 0.03 kg



SCP Part No.: VDM-8

3 X 8 Video Distribution Module

Packaging: 1 Ea/Box

Package Wt: 2.4 lbs / 1.1 kg

RJ45 Crimp Tools

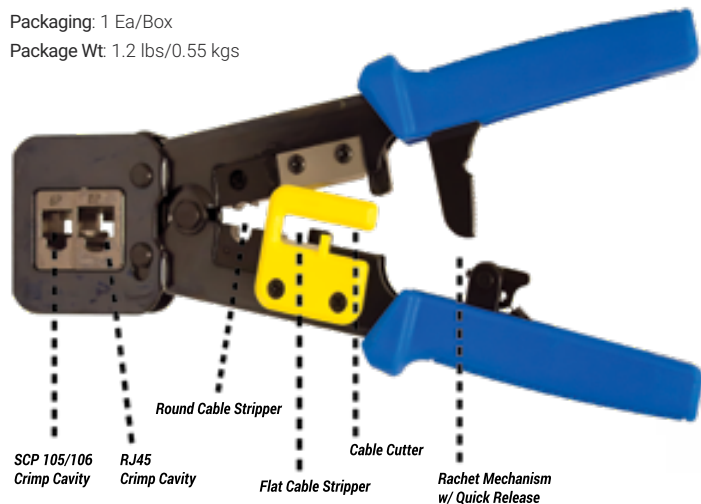
SCP Part No.: EZ-TOOL-PRO

EZ-RJ45 Professional Heavy Duty

Termination Tool

Packaging: 1 Ea/Box

Package Wt: 1.2 lbs/0.55 kgs



SCP Part No.: EZ-BLADE

Replacement Blades for

EZ-TOOL & EZ-TOOL-PRO

4 PACK- CLAMSHELL

Packaging: 1 Ea/Blister

Package Wt: 0.018 lbs / 0.01 kgs

EZ TOOL PRO

This high quality crimp tool is designed to quickly crimp and cut the wires of the EZ-RJ45® Connector in one easy simple operation! The ratcheted straight action crimping motion ensures a uniform crimp every cycle. Features precision cast crimping dies for superior accuracy. All steel frame with rust resistant black oxide finish. Built-in wire cutter and strippers are part of an all-in-one design that reduces the number of tools needed on the job. Zero flex frame prevents torque loss during crimping. Steel die head assembly provides 360° connector support during crimp

Professional CAT/6A Shielded 10G RJ45 Crimp Tool - New Item

SCP Part No.: 803

Professional CAT6/6A Shielded

10G RJ45 Crimp Tool

Use with SCP's #106A

(CAT6/6A Shielded RJ45 8P8C Modular Plug)

Packaging: 1 Ea/Blister

Package Wt: 1.15 lbs / 0.52 kgs



SCP Part No.: 106A

See Pg.46

Use with SCP's #106A

(CAT6/6A Shielded RJ45 8P8C Modular Plug)

Cables: CAT6 Shielded | CAT6A | CAT6A-U/FTP | HNCPROPLUS+™ Shielded

RJ45 Crimp Tools

SCP Part No.: 802

RJ45 Modular Plug Crimping Tool

Crimps 4, 6, 8, 8c keyed module

plugs. (Cuts, Strips, and Crimps)

Packaging: 1 Ea/Blister

Package Wt: 0..66 lbs / 0.3 kgs

3-IN-1

CUTS, STRIPS, & CRIMPS

4, 6, 8, 8C Keyed Modular Plugs



Coax - Crimp Tools

**SCP Part No.: 817**

F, RCA, & BNC (3-IN-1)
Compression Crimping Tool
Works with all SCP
Compression Connectors
Packaging: 1 Ea/Box
Package Wt: 0.55 lbs / 0.25 kgs

**SCP Part No.: 814**

BNC Ratchet Crimp Tool,
Works with BNC & F Connectors
Packaging: 1 Ea/Blister
Package Wt: 1.16 lbs / 0.52 kgs

Strippers & Cutters

**SCP Part No.: 808**

CAT5 Cable Stripper
Packaging: 1 Ea/Box
Package Wt: 0.7 lbs / 0.03 kgs

**SCP Part No.: 809**

Coaxial Cable Stripper
Packaging: 1 Ea/Box
Package Wt: 0.10 lbs / 0.04 kgs

Punch Down Tools

**SCP Part No.: 800**

Impact Punch Down Tool 110 Type
Packaging: 1 Ea/Blister
Package Wt: 0.36 lbs / 0.16 kgs

**SCP Part No.: 819**

Impact Punch Down Tool
Packaging: 1 Ea/Blister
Package Wt: 1.36 lbs / 0.61 kgs

All in one termination and wire cutting tool for 90 degree keystone jacks

Use with SCP's # (101-XX | 103-XX | CAT6-JACK-XX)

See Pg.51

**SCP Part No.: 820**

Termination/Cutting Tool for
90 Degree Keystone Jacks
Packaging: 1 Ea/Blister
Package Wt: 1 lbs / 0.46 kgs

WALL PLATES & MODULES

Decorator Style Wall Plates | Keystone Wall Plates | Keystone Snap-In Modules | Blank Wall Plates | Preconstructed Wall Plates

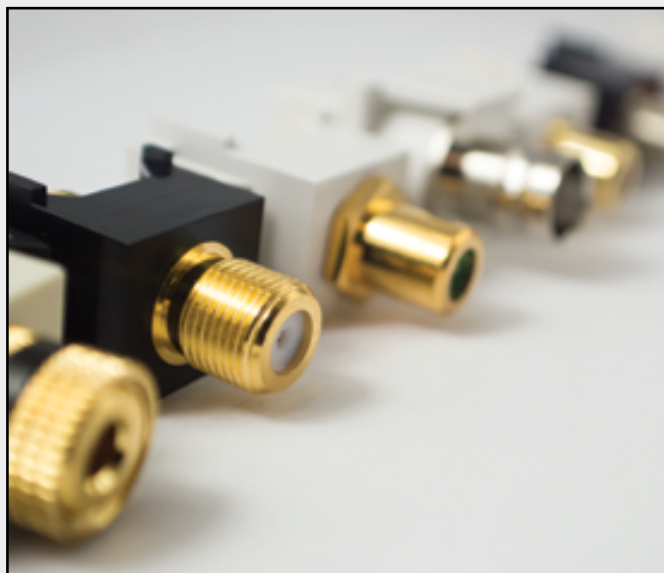
SCP Wall Plates and Snap-In Inserts are rapidly becoming the preferred choice by Installers for their residential and commercial installations. Compare SCP quality and price with the Leviton QuickPort® and Decora® wall plates and Snap-In connectors and save on your installation.

Decorator Style Wall Plates

SCP Decorator Style Wall Plates provide a clean and professional finish for residential and commercial installations. SCP Decorator Style Wall Plates give you the flexibility to customize your wall plate using SCP Snap-In Modules for audio, video, voice, and data. Compare SCP quality and price with the Leviton Decora® wall plates and save on your installation. SCP Decorator Style Wall Plates are available in White, Almond, Light Almond, & Ivory. All SCP Decorator Style Wall Plates exceed industry standards and are UL listed; fully compliant with NEC® Article 800; and meets FCC Part 68.

Keystone Wall Plates

SCP Keystone Wall plates allow you to customize your wall plate configurations using SCP Snap-In Modules. Compare SCP quality to the Leviton QuickPort® Wall plates but at a better price point. SCP Keystone Wall plates are made of high-impact ABS and fire retardant plastic that is compliant with UL 94V-0 and TIA/EIA 568-C specifications. SCP Keystone Wall plates fit standard NEMA openings and come in 1, 2, 3, 4, 6, and 12 port configurations. These wall plates are available in 4 colors that match the Leviton color patterns and include color matched screws. All SCP Keystone Wall plates exceed industry standards and are compliant with NEC Article 800, meet FCC Part 68, and are UL listed.



Keystone Snap-In Modules

Customize your wall-plates using SCP Snap-In Multimedia Modules. Compare SCP quality and price with the Leviton QuickPort® Snap-In Modules and save on your installation. All SCP snap-in modules meet or exceed industry standards and are UL listed; fully compliant with NEC® Article 800; and meets FCC Part 68.

Preloaded Wall Plates

SCP has a full line of preloaded wall plates for CATV, Telephone, HDMI, Home Theater, and structured wiring connections. Our wall plates are UL Listed.



Leviton®, Decora®, QuickPort® are registered trademarks of Leviton Manufacturing Co., Inc.

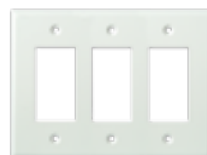
Decorator Style Wall Plates

**SCP Part No.: 200D-WT**

Single Gang
Decorator Style Face Plate
Colors: White
Packaging: 10 Ea/Per Pack
Package Wt: 0.54 lbs / 0.25 kgs

**SCP Part No.: 200D-2G-XX**

Double Gang
Decorator Style Face Plate
Colors: White, Light Almond
Packaging: 10 Ea/Per Pack
Package Wt: 0.7 lbs / 0.3 kgs

**SCP Part No.: 200D-3G-XX**

Triple Gang
Decorator Style Face Plate
Colors: White, Light Almond
Packaging: 10 Ea/Per Pack
Package Wt: 0.89 lbs / 0.4 kgs

Decorator Style Wall Plates w/Inserts

**SCP Part No.: 201D-XX**

1 Port Keystone Insert
+ Decorator Style Wall Plate, UL
Colors: White, Light Almond
Packaging: 10 Ea/Per Pack
Package Wt: 0.8 lbs / 0.36 kgs

**SCP Part No.: 202D-XX**

2 Port Keystone Insert
+ Decorator Style Wall Plate, UL
Colors: White, Light Almond
Packaging: 10 Ea/Per Pack
Package Wt: 0.83 lbs / 0.38 kgs

**SCP Part No.: 203D-XX**

3 Port Keystone Insert
+ Decorator Style Wall Plate, UL
Colors: White, Light Almond
Packaging: 10 Ea/Per Pack
Package Wt: 0.77 lbs / 0.35 kgs

**SCP Part No.: 204D-XX**

4 Port Keystone Insert
+ Decorator Style Wall Plate, UL
Colors: White, Light Almond
Packaging: 10 Ea/Per Pack
Package Wt: 0.82 lbs / 0.37 kgs

**SCP Part No.: 206D-XX**

6 Port Keystone Insert
+ Decorator Style Wall Plate, UL
Colors: White, Light Almond
Packaging: 10 Ea/Per Pack
Package Wt: 0.77 lbs / 0.35 kgs

Decorator Style Wall Plates - Preloaded

**SCP Part No.: 219D-XX**

Decorator Style Wall Plate
Single Gang + 4C Telephone
Flush Jack Insert
Colors: White
Packaging: 10 Ea/Per Pack
Package Wt: 0.1 lbs / 0.05 kgs

**SCP Part No.: 240D-XX**

4C Telephone + CATV
F-Type Decorator Style
Wall Plate & Insert, UL
Colors: White
Packaging: 10 Ea/Per Pack
Package Wt: 0.1 lbs / 0.05 kgs

**SCP Part No.: 241D-XX**

CATV F-Type Jack - Decorator
Style Wall Plate & Insert, UL
Colors: White
Packaging: 10 Ea/Per Pack
Package Wt: 0.8 lbs / 0.36 kgs

**SCP Part No.: 125-XX**

1x HDMI Preconstructed
Wall Plate - Decorator Style
Colors: White, Light Almond
Packaging: 1 Ea/Bag
Package Wt: 0.1 lbs / 0.05 kgs

Keystone Wall Plates - Standard

**SCP Part No.: 201-XX**

1 Port - Keystone Wall Plate
Standard Single Gang, UL
Colors: White, Ivory, Light Almond,
Brown, Black, White Glossy
Packaging: 10 Ea/Per Pack
Package Wt: 0.62 lbs / 0.281 kgs

**SCP Part No.: 202-XX**

2 Port - Keystone Wall Plate
Standard Single Gang, UL
Colors: White, Ivory, Light Almond,
Brown, Black, White Glossy Finish
Packaging: 10 Ea/Per Pack
Package Wt: 0.62 lbs / 0.281 kgs

**SCP Part No.: 203-XX**

3 Port - Keystone Wall Plate
Standard Single Gang, UL
Colors: White, Ivory, Light Almond,
Brown, Black, White Glossy Finish
Packaging: 10 Ea/Per Pack
Package Wt: 0.62 lbs / 0.281 kgs

**SCP Part No.: 204-XX**

4 Port - Keystone Wall Plate
Standard Single Gang, UL
Colors: White, Ivory,
Light Almond, Brown, Black,
Packaging: 10 Ea/Per Pack
Package Wt: 0.65 lbs / 0.3 kgs

**SCP Part No.: 206-XX**

6 Port - Keystone Wall Plate
Standard Single Gang, UL
Colors: Black,
Light Almond, White
Packaging: 10 Ea/Per Pack
Package Wt: 0.63 lbs / 0.29 kgs

**SCP Part No.: 2012-XX**

12 Port - Keystone Wall Plate
Standard Double Gang, UL
Colors: White
Packaging: 10 Ea/Per Pack
Package Wt: .011 lbs / 0.05 kgs

Leviton®, Decora®, QuickPort® are registered trademarks of Leviton Manufacturing Co., Inc

Keystone Wall Plates - Mid Size

**SCP Part No.: 301-XX**

1 Port - Mid Size - Keystone
Wall Plate - Single Gang, UL
Colors: White, Light Almond
Packaging: 10 Ea/Per Pack
Package Wt: 0.73 lbs / 0.33 kgs

**SCP Part No.: 302-XX**

2 Port - Mid Size - Keystone
Wall Plate - Single Gang, UL
Colors: White, Light Almond
Packaging: 10 Ea/Per Pack
Package Wt: 0.75 lbs / 0.34 kgs

**SCP Part No.: 303-XX**

3 Port - Mid Size - Keystone
Wall Plate - Single Gang, UL
Colors: White, Light Almond
Packaging: 10 Ea/Per Pack
Package Wt: 0.74 lbs / 0.34 kgs

**SCP Part No.: 304-XX**

4 Port - Mid Size - Keystone
Wall Plate - Single Gang, UL
Colors: White, Light Almond
Packaging: 10 Ea/Per Pack
Package Wt: 0.78 lbs / 0.35 kgs

**SCP Part No.: 306-XX**

6 Port - Mid Size - Keystone
Wall Plate - Single Gang, UL
Colors: Light Almond, White
Packaging: 10 Ea/Per Pack
Package Wt: 0.75 lbs / 0.35 kgs

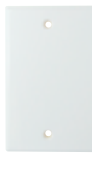
Mid-Size Keystone Wall Plates

Slightly larger than the standard size. These plates were designed to help hide wall imperfections and installation mistakes. Manufactured with a smooth finish on high-impact ABS plastic. Our superior quality mid-size plate is built to last.

Blank Wall Plates

**SCP Part No.: 242-XX**

Single Gang Blank Wall Plate
Colors: White,
Light Almond, Black, Brown,
Packaging: 10 Ea/Per Pack
Package Wt: 0.05 lbs / 0.02 kgs

**SCP Part No.: 249-XX**

Double Gang Blank Wall Plate
Colors: White, Light Almond
Packaging: 10 Ea/Per Pack
Package Wt: 0.1 lbs / 0.05 kgs

Leviton®, Decora®, QuickPort® are registered trademarks of Leviton Manufacturing Co., Inc

Keystone Snap-In Modules

**SCP Part No.: 208-XX**

BNC Keystone Snap-In
Insert - Nickel Plated, UL
Colors: White
Packaging: 50 Ea/Per Pack
Package Wt: 0.04 lbs / 0.01 kgs

**SCP Part No.: 209-XX**

1 GHz F-Connector
Keystone Snap-In Insert,
Female-Female, Nickel Plated, UL
Colors: Black, Brown, Ivory,
Light Almond, White
Packaging: 50 Ea/Per Pack
Package Wt: 0.04 lbs / 0.01 kgs

**SCP Part No.: 209G-XX**

1 GHz F-Connector
Keystone Snap-In Insert,
Female-Female, Gold Plated, UL
Colors: Black, White
Packaging: 50 Ea/Per Pack
Package Wt: 0.04 lbs / 0.01 kgs

**SCP Part No.: 209-3GHZ-WT**

3 GHz F-Connector
Keystone Snap-In Insert,
Female-Female, Gold Plated, UL
Colors: White
Packaging: 50 Ea/Per Pack
Package Wt: 0.04 lbs / 0.01 kgs

**SCP Part No.: 243BK-XX**

RCA Snap-In Module,
Gold Plated, Black Bezel
Colors: White
Packaging: 50 Ea/Bag
Package Wt: 0.03 lbs / 0.01 kgs

**SCP Part No.: 243BL-XX**

RCA Snap-In Module,
Gold Plated, Blue Bezel
Colors: White
Packaging: 50 Ea/Bag
Package Wt: 0.03 lbs/0.01 kgs

**SCP Part No.: 243GN-XX**

RCA Snap-In Module,
Gold Plated, Green Bezel
Colors: White
Packaging: 50 Ea/Bag
Package Wt: 0.03 lbs / 0.01 kgs

**SCP Part No.: 243RD-XX**

RCA Snap-In Module,
Gold Plated, Red Bezel
Colors: White
Packaging: 50 Ea/Bag
Package Wt: 0.03 lbs / 0.01 kgs

Leviton®, Decora®, QuickPort® are registered trademarks of Leviton Manufacturing Co., Inc

Keystone Snap-In Modules

**SCP Part No.: 243WT-XX**

RCA Snap-In Module,
Gold Plated, White Bezel
Colors: White, Almond
Packaging: 50 Ea/Bag
Package Wt: 0.03 lbs / 0.01 kgs

**SCP Part No.: 243YL-XX**

RCA Snap-In Module,
Gold Plated, Yellow Bezel
Colors: White, Almond
Packaging: 50 Ea/Bag
Package Wt: 0.03 lbs / 0.01 kgs

**SCP Part No.: 247-XX**

F Female to RCA Insert
(for Subwoofer)
Colors: White
Packaging: 10 Ea/Bag
Package Wt: 0.28 lbs/0.01 kgs

**SCP Part No.: 241BK-XX**

Speaker Binding Post Keystone
Insert, Gold Plated-Black
Colors: White, Light Almond
Packaging: 50 Ea/Bag
Package Wt: 1.80lbs / 0.81kgs

**SCP Part No.: 241RD-XX**

Speaker Binding Post Keystone
Insert, Gold Plated - Red
Colors: White, Light Almond
Packaging: 50 Ea/Bag
Package Wt: 1.80lbs/0.81kgs

**SCP Part No.: 251-WT**

HDMI Keystone Insert
Colors: White
Packaging: 1 Ea/Bag
Package Wt: 0.02 lbs / 0.01 Kgs

**SCP Part No.: 207-XX**

Blank Keystone Snap-In Insert, UL
Colors: Black, Light Almond, White
Packaging: 10 Ea/Bag
Package Wt: 0.04 lbs / 0.02 kgs

Leviton®, Decora®, QuickPort® are registered trademarks of Leviton Manufacturing Co., Inc

Combo Wall Plates - Preloaded

**SCP Part No.: 121-XX**

1x CATV + 1x CAT5E Wall Plate
Colors: White
Packaging: 1 Ea/Bag
Package Wt: 0.1 lbs / 0.05 kgs

**SCP Part No.: 122-XX**

1x VOICE + 1x CAT5E Wall Plate
Colors: White,
Packaging: 1 Ea/Bag
Package Wt: 0.1 lbs / 0.05 kgs

**SCP Part No.: 123-XX**

1x VOICE + 1x CAT5E
+ 1x CATV Wall Plate
Colors: White,
Packaging: 1 Ea/Bag
Package Wt: 0.12 lbs / 0.06 kgs

**SCP Part No.: 124-XX**

2x CAT5E + 2x CATV Wall Plate
Colors: White
Packaging: 1 Ea/Bag
Package Wt: 0.13 lbs / 0.07 kgs

Telecom & TV Wall Plates - Preloaded

**SCP Part No.: 219-XX**

4C Telephone Flush Mount
Colors: White, Ivory,
Light Almond, Black
Packaging: 1 Ea/Per Pack
Package Wt: 0.7 lbs / 0.03 kgs

**SCP Part No.: 220-XX**

Telephone Wall Mounted Plate
Colors: White, Light Almond, Black
Packaging: 1 Ea/Per Pack
Package Wt: 0.12 lbs / 0.06 kgs

**SCP Part No.: 238-XX**

4C Telephone + 2x CATV F-Type
Colors: White
Packaging: 1 Ea/Per Pack
Package Wt: 0.11 lbs / 0.05 kgs

**SCP Part No.: 239-XX**

Dual 4C Telephone
Available Colors: White
Packaging: 1 Ea/Per Pack
Package Wt: 0.08 lbs / 0.04 kgs

Telecom & TV Wall Plates - Preloaded Continued..

**SCP Part No.: 240-XX**

4C Telephone + CATV F-Type

Colors: White, Light Almond, Black

Packaging: 1 Ea/Per Pack

Package Wt: 0.62 lbs / 0.281 kgs

**SCP Part No.: 241-XX**

CATV F-Type - COAX

Wall Plate - Single Gang, UL

Colors: White, Ivory,

Light Almond, Black

Packaging: 1 Ea/Per Pack

Package Wt: 0.62 lbs / 0.281 kgs

**SCP Part No.: 248**

Dual CATV F-Type - COAX

Wall Plate - Single Gang, UL

Packaging: 1 Ea/Per Pack

Package Wt: 0.62 lbs / 0.281 kgs

Cable Entrance Wall Plates - Reversible

**SCP Part No.: MBCE-1-WT**

Single Gang Reversible

Non-Metallic Cable Entrance

Packaging: 25 Ea/Per Box

Package Wt: 0.124 lbs / 0.06 kgs

**SCP Part No.: MBCE-2-WT**

2 Gang Reversible

Non-Metallic Cable Entrance

Packaging: 25 Ea/Per Box

Package Wt: 0.192 lbs / 0.09 kgs

**SCP Part No.: MBCE-H1-WT**

Horizontal Scoop Reversible

Non-Metallic Cable Entrance

Packaging: 25 Ea/Per Box

Package Wt: 0.128 lbs / 0.06 kgs

Cable Entrance Wall Plates - Brush Style

**SCP Part No.: 252**

Audio/Video Brush

Wall Plate- White w/Clear Brush

Packaging: 1 Ea/Pack 10

Package Wt: 0.10 lbs / 0.04 kgs

**SCP Part No.: 253**

Audio/Video Brush

Wall Plate- White w/Black Brush

Packaging: 1 Ea/Pack 10

Package Wt: 0.10 lbs / 0.04 kgs

AUDIO/VIDEO BRUSH WALL PLATES

SCP's Audio & Video Brush Wall Plate allows installers to offer a clean on-wall wire management device. It permits the installer to easily pass any wire through the plate and still maintain a clean professional appearance. SCP's A/V Brush Wall Plate is supplied with the Wire Brush Adapter Plate, The decorator trim plate, and the necessary screws for attachment to your standard electrical box or rough-in-ring.

**60 DAY RISK FREE LIMITED WARRANTY****25 YEAR CERTIFIED SYSTEM PERFORMANCE WARRANTY**

For details on our warranty programs, please visit our website.

www.scpcat5e.com



Structured Cable Products™
Quality Installations Deserve Quality Products



USA Toll Free

866-470-5742

Direct Line: +1-954-327-5770

Email: sales@scpcat5e.com

Web: www.scpcat5e.com



CUSTOM
ELECTRONIC
DESIGN &
INSTALLATION
ASSOCIATION

Member

Member
infoComm
INTERNATIONAL

AV-iQ

HDBT
ASE
Member